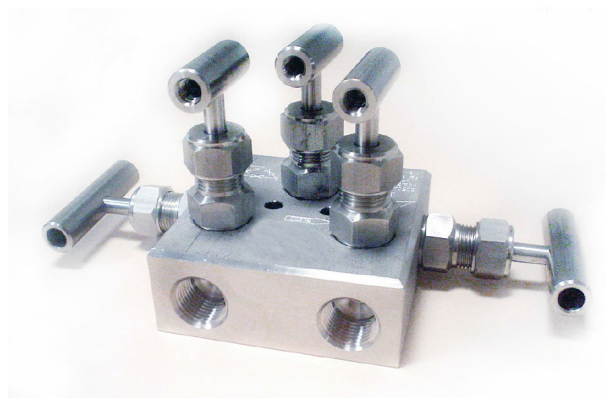


The MB-2.5 Series manifolds are designed to work with fluids under high pressure and/or high temperature service. You can select among three different distribution diagrams where five valves command two pressure lines, a by-pass and two purge lines.

Features & Benefits

- Metal-to-metal shut-off
- Easy packing external adjustment
- Free packing change in service
- PTFE packing
- 100% tested

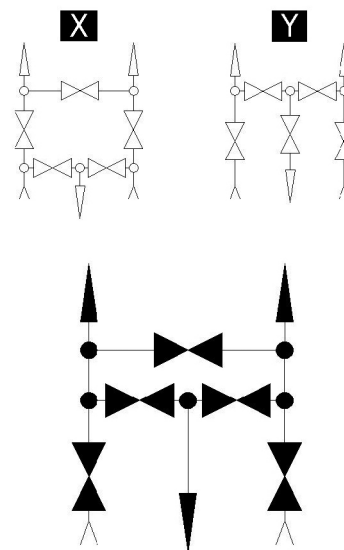


Options

- Movable stem tip
- Graphoil packing for high temperatures
- Four screws M10 instead of 7/16" UNF
- Diagram 2
- Diagram 3

Technical Data

Max. Pressure	Up to 6000 PSI (420 bar)
Temperatures	-4°F / 752°F (-20°C / 400°C)
Dimensions	1/2"
A Opened	4.01
A Closed	3.73
B Opened	4.99
B Closed	4.72
C	3.54
D	2.12
Orifice Size	4



Order Codes

NPT	3250
BSP	3251
SW	3252

Materials

No.	Part	Carbon Steel	Stainless Steel AISI-316	Special Alloys
1	Set Screw	AISI-304 (DIN1.4301)	AISI-304 (DIN1.4301)	AISI-304 (DIN1.4301)
2	Handle	F-112 (DIN1.1158)	AISI-316 (DIN1.4401)	AISI-316 (DIN1.4401)
3	Nut	F-112 (DIN1.1158)	AISI-316 (DIN1.4401)	AISI-316 (DIN1.4401)
4	Bonnet	F-112 (DIN1.1158)	AISI-316 (DIN1.4401)	Exotic Alloy
5	Gland	F-112 (DIN1.1158)	AISI-316 (DIN1.4401)	AISI-316 (DIN1.4401)
6	Packing	PTFE or Graphoil	PTFE or Graphoil	PTFE or Graphoil
7	Stem	AISI-316 (DIN1.4401)	AISI-316 (DIN1.4401)	Exotic Alloy
8	Body	F-112 (DIN1.1158)	AISI-316 (DIN1.4401)	Exotic Alloy

Special Alloys

Among the wide range of alloys existing, J Flow has selected those considered by our customers as most suitable, which we stock to ensure a quick and effective supply. If you do not find the required alloy or need further information about our exotic alloy valves, please contact our Technical Department.

AISI-316Ti (1.4571)
 AISI-904L (1.4539)
 Duplex (1.4462)
 SuperDuplex (1.4410/1.4501)
 254-SMO (1.4547)
 Titanium Gr. 2 (1.7864)
 Hastelloy C-276 (2.4819)

Ordering Information

Manifold Code: Look for it in the order codes chart on the previous page

Option/s: If required, add the code/s from the options section on the previous page

Material: Look for the code on the materials chart

Example of manifold and two options:

Manifold MB-2.5 1/2" NPT AISI-316L with diagram 2 and graphoil packing of: The reference required to place the order is: 3251GXA4

Tests

Each manifold is tested to check the leakage in the seat and packing. Upon request, the corresponding materials and test certificates can be delivered with the manifold.

