

The MBT-2.3DT Series manifolds are designed to work with fluids under high pressure and/or high temperature service. Their distribution diagram consists of three valves commanding three lines: high pressure, low pressure and a by-pass line to restart the instrument. The coupling is manufactured according to DIN EN 61518. Four screws 7/16" UNF and two PTFE joints to assemble the transmitter are supplied.

Features & Benefits

- High-strength body
- Stainless steel non-rotating ball shut-off
- PTFE packing
- 100% tested

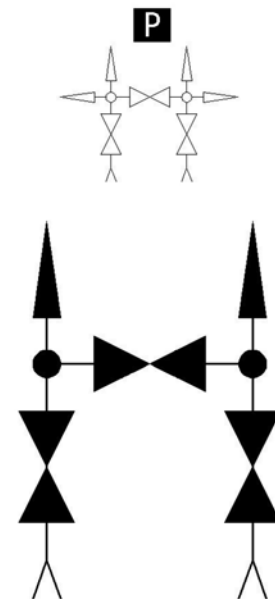
Options

- Movable stem tip
- Graphoil packing for high temperatures
- Four screws M10 instead of 7/16" UNF
- Two bleed screws in outflow



Technical Data

Max. Pressure	Up to 6000 PSI (420 bar)
Temperatures	-4°F / 752°F (-20°C / 400°C)
Dimensions	1/2"
A Opened	3.62
A Closed	3.34
B Opened	4.79
B Closed	4.52
C	3.14
D	1.61
E	2.12
F	7/16" UNF
G	2.12
Orifice Size	4



Order Codes

NPT	3150
BSP	3151
SW	3152

Materials

No.	Part	Carbon Steel	Stainless Steel AISI-316	Special Alloys
1	Set Screw	AISI-304 (DIN1.4301)	AISI-304 (DIN1.4301)	AISI-304 (DIN1.4301)
2	Handle	F-112 (DIN1.1158)	AISI-316 (DIN1.4401)	AISI-316 (DIN1.4401)
3	Nut	F-112 (DIN1.1158)	AISI-316 (DIN1.4401)	AISI-316 (DIN1.4401)
4	Bonnet	F-112 (DIN1.1158)	AISI-316 (DIN1.4401)	Exotic Alloy
5	Gland	F-112 (DIN1.1158)	AISI-316 (DIN1.4401)	AISI-316 (DIN1.4401)
6	Packing	PTFE or Graphoil	PTFE or Graphoil	PTFE or Graphoil
7	Stem	AISI-316 (DIN1.4401)	AISI-316 (DIN1.4401)	Exotic Alloy
8	Body	F-112 (DIN1.1158)	AISI-316 (DIN1.4401)	Exotic Alloy
9	Screw	F-112 (DIN1.1158)	AISI-316 (DIN1.4401)	AISI-316 (DIN1.4401)
10	Joint	PTFE	PTFE	PTFE

Special Alloys

Among the wide range of alloys existing, J Flow has selected those considered by our customers as most suitable, which we stock to ensure a quick and effective supply. If you do not find the required alloy or need further information about our exotic alloy valves, please contact our Technical Department.

- AISI-316Ti (1.4571)
- AISI-904L (1.4539)
- Duplex (1.4462)
- SuperDuplex (1.4410/1.4501)
- 254-SMO (1.4547)
- Titanium Gr. 2 (1.7864)
- Hastelloy C-276 (2.4819)

Ordering Information

Manifold Code: Look for it in the order codes chart on the previous page

Option/s: If required, add the code/s from the options section on the previous page

Material: Look for the code on the materials chart

Example of manifold and two options:

Manifold MBT-2.3DT 1/2" NPT 254-SMO with movable tip and two bleed valves in outflow: The reference required to place the order is: 3150FPAV

Tests

Each manifold is tested to check the leakage in the seat and packing. Upon request, the corresponding materials and test certificates can be delivered with the manifold.

