

The MBT-2.3DA Series manifolds are designed to work with fluids under high pressure and/or high temperature service. Their distribution diagram consists of three valves commanding three lines: high pressure, low pressure and a by-pass line to restart the instrument. The coupling is manufactured according to DIN EN 61518. Four screws 7/16" UNF and two PTFE joints to assemble the transmitter are supplied.

## Features & Benefits

- High-strength body
- Stainless steel non-rotating ball shut-off
- PTFE packing
- 100% tested

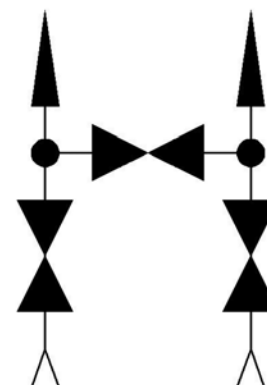
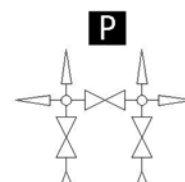
## Options

- Movable stem tip
- Graphoil packing for high temperatures
- Four screws M10 instead of 7/16" UNF
- Two bleed screws in outflow



## Technical Data

|               |                              |
|---------------|------------------------------|
| Max. Pressure | Up to 6000 PSI (420 bar)     |
| Temperatures  | -4°F / 752°F (-20°C / 400°C) |
| Dimensions    | Flange                       |
| A Opened      | 3.62                         |
| A Closed      | 3.34                         |
| B Opened      | 4.79                         |
| B Closed      | 4.52                         |
| C             | 2.83                         |
| D             | 1.61                         |
| E             | 2.12                         |
| F             | 7/16" UNF                    |
| Orifice Size  | 4                            |



## Order Codes

|        |      |
|--------|------|
| Flange | 3200 |
|--------|------|

### Materials

| No. | Part      | Carbon Steel         | Stainless Steel AISI-316 | Special Alloys       |
|-----|-----------|----------------------|--------------------------|----------------------|
| 1   | Set Screw | AISI-304 (DIN1.4301) | AISI-304 (DIN1.4301)     | AISI-304 (DIN1.4301) |
| 2   | Handle    | F-112 (DIN1.1158)    | AISI-316 (DIN1.4401)     | AISI-316 (DIN1.4401) |
| 3   | Nut       | F-112 (DIN1.1158)    | AISI-316 (DIN1.4401)     | AISI-316 (DIN1.4401) |
| 4   | Bonnet    | F-112 (DIN1.1158)    | AISI-316 (DIN1.4401)     | Exotic Alloy         |
| 5   | Gland     | F-112 (DIN1.1158)    | AISI-316 (DIN1.4401)     | AISI-316 (DIN1.4401) |
| 6   | Packing   | PTFE or Graphoil     | PTFE or Graphoil         | PTFE or Graphoil     |
| 7   | Stem      | AISI-316 (DIN1.4401) | AISI-316 (DIN1.4401)     | Exotic Alloy         |
| 8   | Body      | F-112 (DIN1.1158)    | AISI-316 (DIN1.4401)     | Exotic Alloy         |
| 9   | Screw     | F-112 (DIN1.1158)    | AISI-316 (DIN1.4401)     | AISI-316 (DIN1.4401) |
| 10  | Joint     | PTFE                 | PTFE                     | PTFE                 |

### Special Alloys

Among the wide range of alloys existing, J Flow has selected those considered by our customers as most suitable, which we stock to ensure a quick and effective supply. If you do not find the required alloy or need further information about our exotic alloy valves, please contact our Technical Department.

AISI-316Ti (1.4571)

AISI-904L (1.4539)

Duplex (1.4462)

SuperDuplex (1.4410/1.4501)

254-SMO (1.4547)

Titanium Gr. 2 (1.7864)

Hastelloy C-276 (2.4819)

### Ordering Information

**Manifold Code:** Look for it in the order codes chart on the previous page

**Option/s:** If required, add the code/s from the options section on the previous page

**Material:** Look for the code on the materials chart

### Example of manifold and two options:

Manifold MBT-2.3DA 1/2" Duplex with movable stem tip and two bleed valves in outflow: The reference required to place the order is: 3200FPAD

### Tests

Each manifold is tested to check the leakage in the seat and packing. Upon request, the corresponding materials and test certificates can be delivered with the manifold.

