

***JSE Series
Spring Return
Fail-Safe Electric Actuators***



Key Features

***Torque outputs from 440 In-Lbs to 2650 In-Lbs
Explosion Proof Design (CSA pending)
Fast open and closing cycle speeds
Compression Springs provide high cycle life
Available in 120VAC / 220VAC / 24VDC
ISO-5211 Mounting***

Product advantages

Product design

Aluminum Compact structure

Safety maintenance

No periodic maintenance is required, and long-term trouble-free operation is possible.

Compression Spring efficiently drives 90° full stroke,

Position detection

The end of travel limit switch are simple to set and reliable

3D dome indicator can be viewed from multiple perspectives,

Optional analog modulating control.

Operational safety

This product provides the highest level of reliability with a mechanical solution when the valve is opened or closed safely in an emergency. According to requirements, the spring-return electric actuator can generate the required torque through the compression spring.

Safety integrity level

The spring-return electric actuator complies with the safety-related SIL2 / SIL 3 standards, is a maintenance-free product, and also provides explosion-proof protection.

Adjustable opening speed

The opening speed of the spring return actuator is adjustable. The actuator can reduce the speed and drive the valve to the preset opening position, thereby avoiding a sudden increase in pressure in the pipeline and effectively protecting the valve and pipeline.

Replaceable connection parts

The flange and drive sleeve of the actuator are designed according to ISO-5211, and various designs can be used, which is convenient and flexible for direct mount configurations.

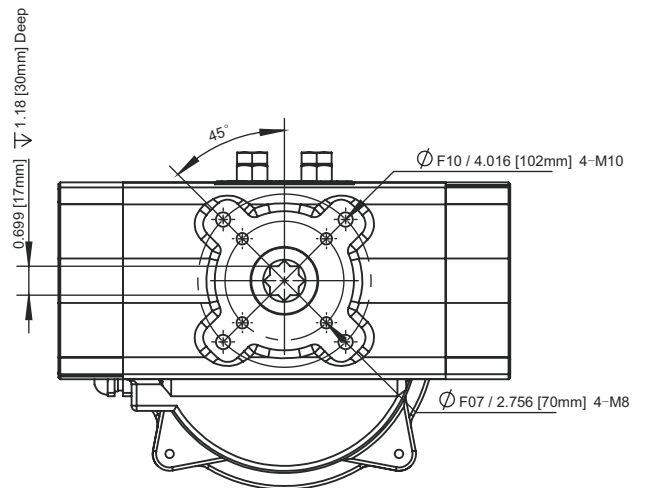
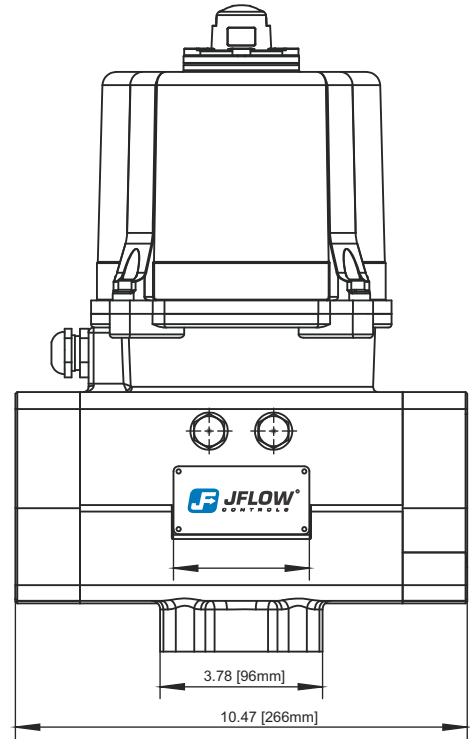
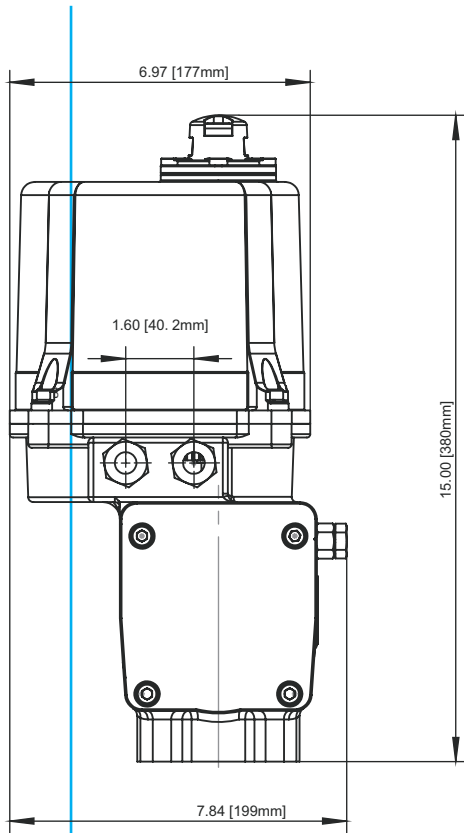
Spring-return electric actuator, designed for valves or dampers to return to a safe position on power loss; mechanical spring-return design can ensure that the device to be controlled is fully open or fully closed without external power; under the normal power conditions, the actuator is opened by the motor and spring is compressed. When the system is powered off, the spring releases energy to drive the actuator to return the equipment and devices to a safety position (fully open or fully closed). Safe and stable.

The internal mechanical part of the spring-return electric actuator includes a drive unit, an spring unit and an energy lock unit. The three units are geared to form a complete fail-safe system.

In addition, the optional manual operation device allows users to manually operate the device to the appropriate position and press the lock button to lock. When electronically controlled without manual unlocking.

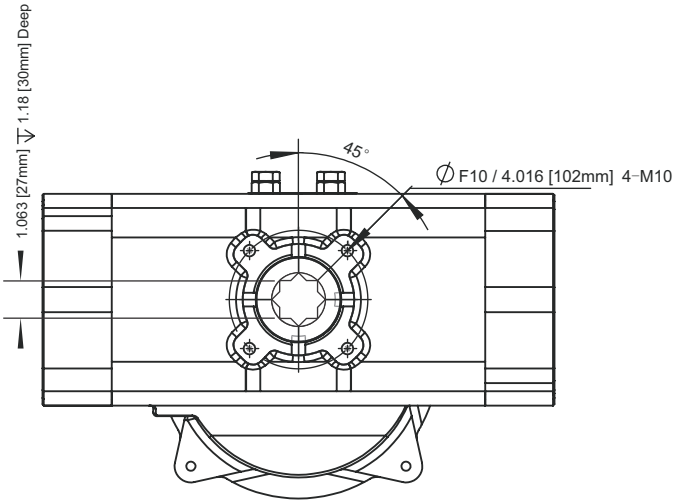
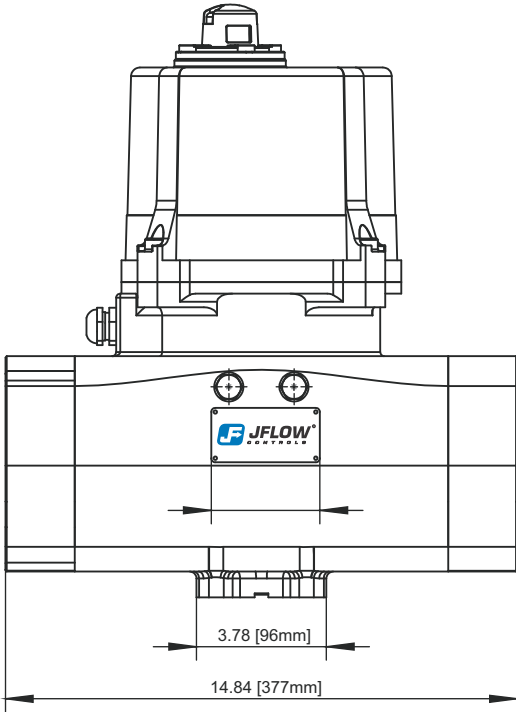
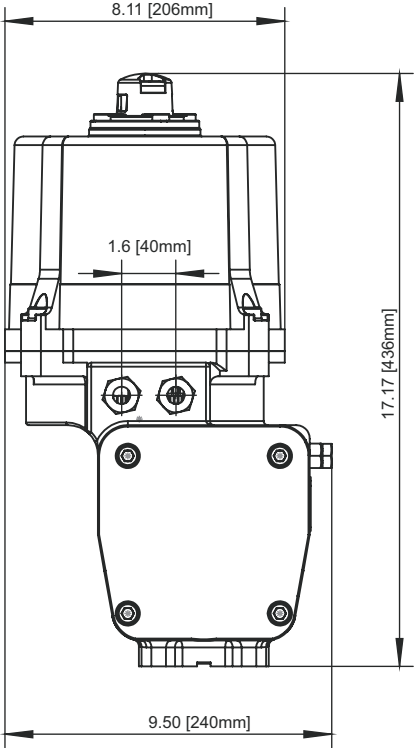


Dimensions



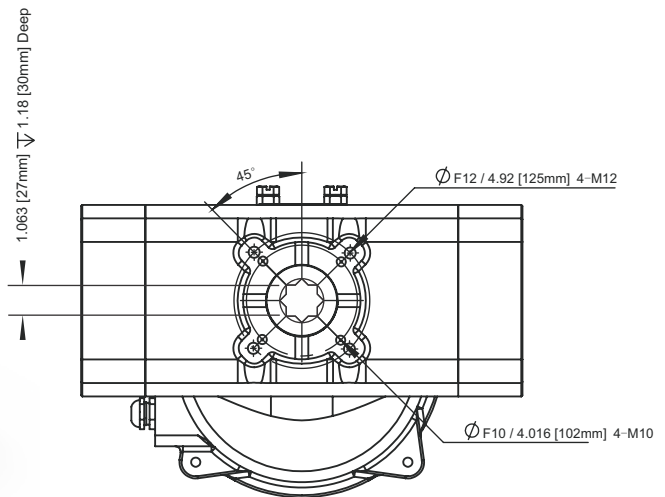
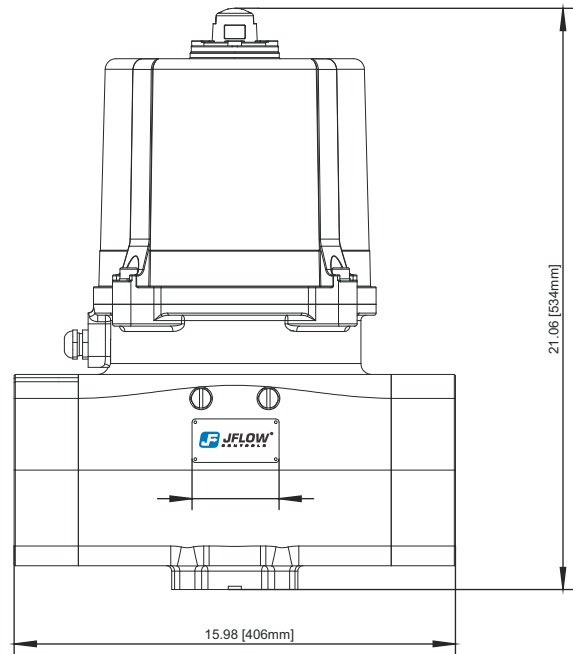
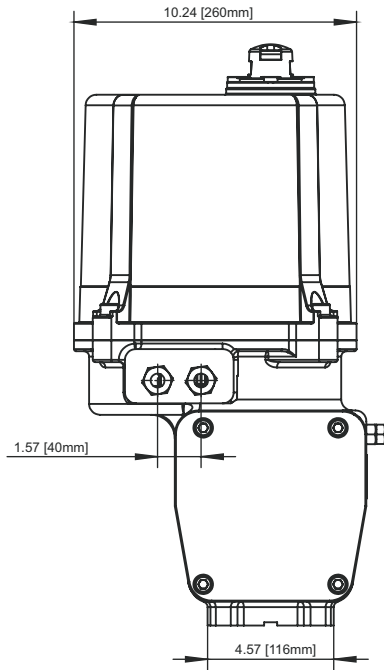
JSE-1

Dimensions



JSE-2

Dimensions



JSE-3

Technical Parameters



Model	JSE-1		JSE-2	JSE-3	
Torque In-Lbs	440	620	1240	1770	2650
Power (W)	60W	60W	120W	200W	200W
Voltage (DC/AC)	110VAC/220VAC、 24VDC				
Frequency (Hz)	50/60				
Duty Cycle	S2-20Min				
open time (Sec)	8	8	10	12	12
Spring return (Sec)	≤3	≤3	≤5	≤5	≤5
Spring life (Cycles)	100000	100000	100000	100000	100000
Flange (ISO5211)	F07/F10	F07/F10	F10	F10/F12	F10/F12
Temp	-13 F to 150 F (-25~65°C)				
Humidity	95%				
Rating	Ip67, Type 4, 4x & 7C&D				
Manual	Available - consult factory				
Manual operation	power off (System power outage)				
Failure direction	CW Close or CCW Open - must specify when ordering				
Stop halfway	Electromagnetic brake control				
Cable	2* 1/2" NPT				
Lubricant	Grease				
Limit mode	2open/2close limit switch				
Switch signal	Dry Aux limit switch feedback				
Mechanical limit	Full mechanical limit				
Explosion-proof grade	Class 1, Div 1, Grps C &D, Ex d IIB(C)T4(6)				
Color	Blue				



4665 Interstate Drive - Cincinnati OH 45246
 TOLL FREE PHONE: 866.95J.FLOW
 Phone: 513.731.2900 - Fax: 513.731.6939

The details of this catalog are subject to change without prior notification.