

STANDARDS

- Enclosure: IP67

J Flow Controls JFWB Series Gear Operators

FEATURES & BENEFITS

- Padlockable handle
- Protected steel input shaft
- 12 models up to 230100 in/lb output
- Enclosure: IP67
- Temperature: -4°F to 248°F
- Stroke: 0 - 90°F (\pm adjustable)
- Virtually maintenance free without visual grease leakage

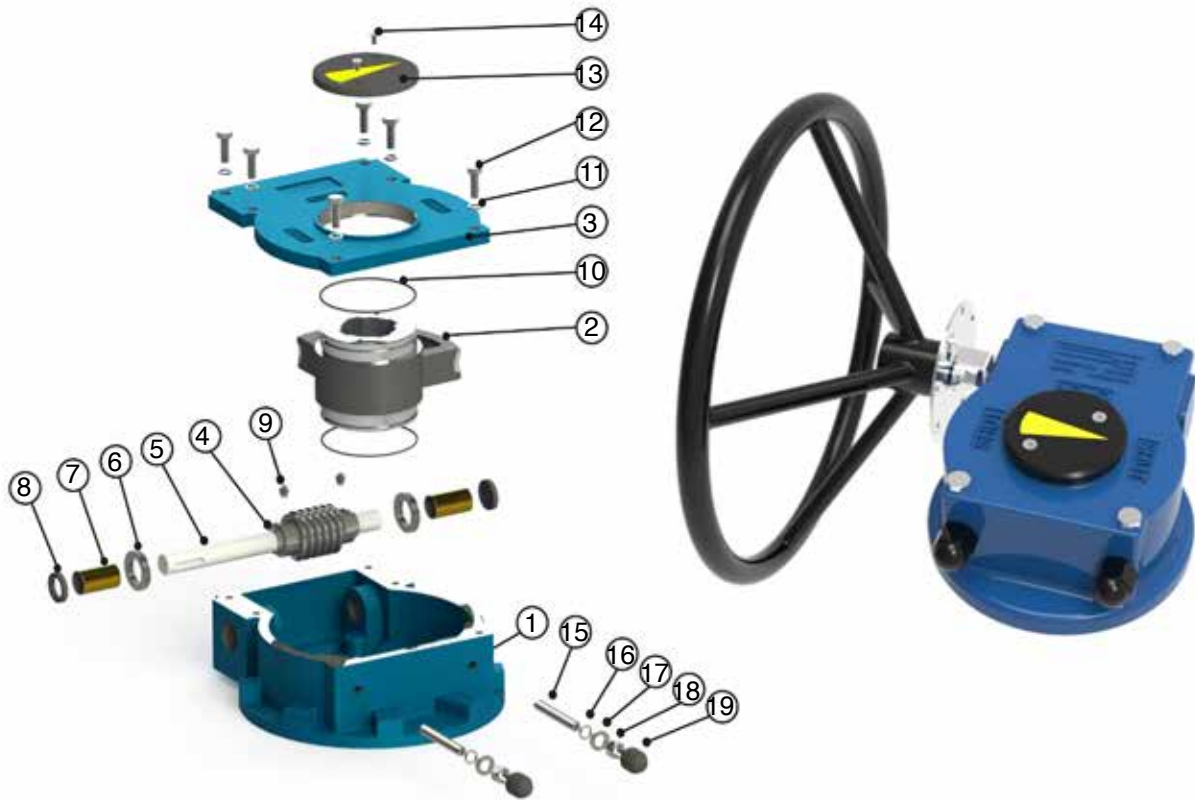
APPLICATIONS

- Intended for the operation of ball, plug and butterfly valves
- Suitable for manual application

GEARS



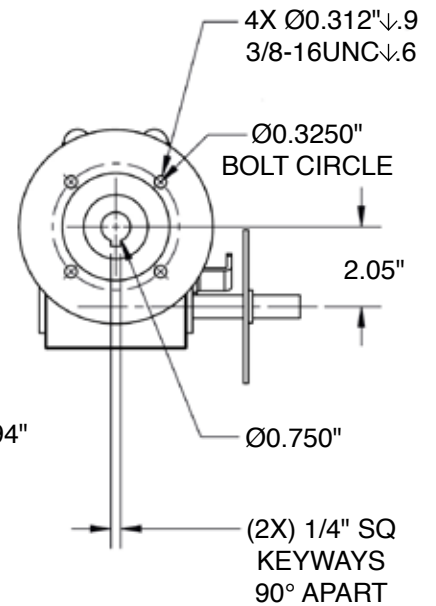
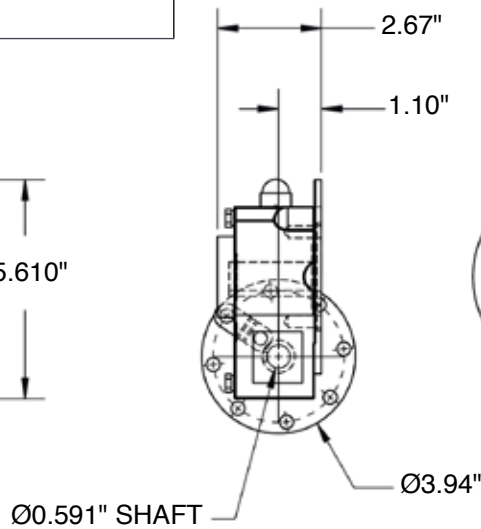
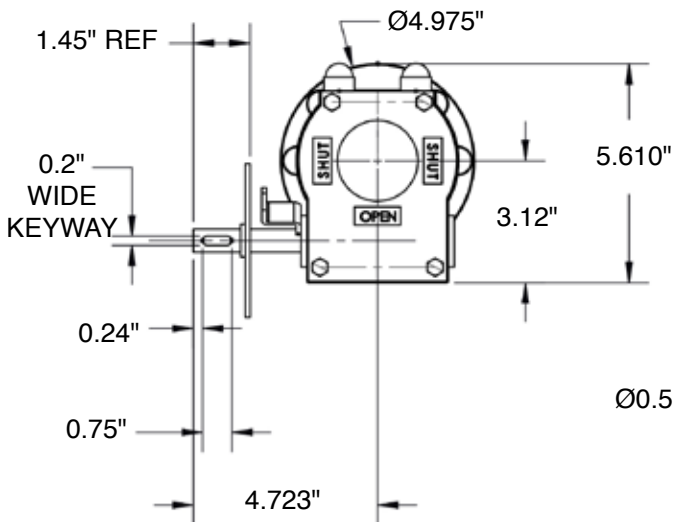
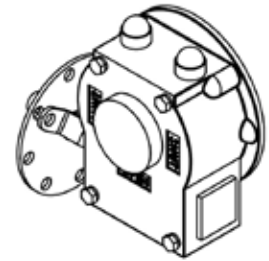
BILL OF MATERIALS



No	Part Name	Material	Material Description
1	Gearbox	Ductile Iron	ASTM A536 65-45-12
2	Worm Gear	Ductile Iron	ASTM A536 65-45-12
3	Cap	Ductile Iron	ASTM A536 65-45-12
4	Worm	Carbon Steel	C45 / ASTM A29 1045
5	Worm Shaft	Carbon Steel	C45 / ASTM A29 1045
6	Bearing	Hardened Steel	-
7	Bushing	SF-1	-
8	Oil Seal	NBR	-
9	Set Screw	Carbon Steel	-
10	O-Ring	NBR	-
11	Spring Washer	Carbon Steel	-
12	Bolt	Carbon Steel	-
13	Position Indicator	ABS	-
14	Screws	Carbon Steel	-
15	Limit S Topbolt	Carbon Steel	-
16	O-Ring	NBR	-
17	Washer	Carbon Steel	-
18	Limit Stop Nut	Carbon Steel	-
19	Screw Cap	ABS	-

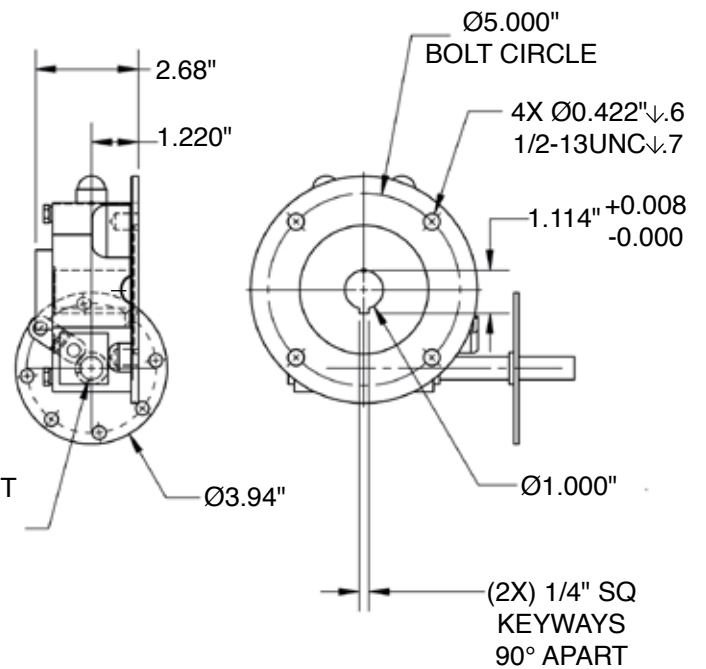
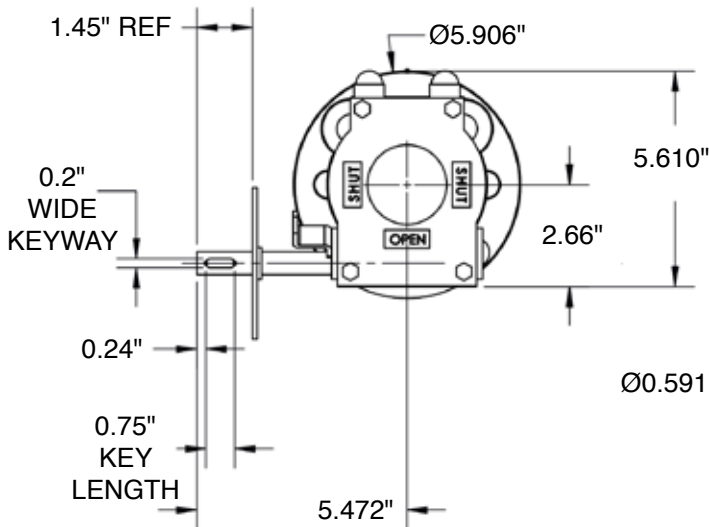
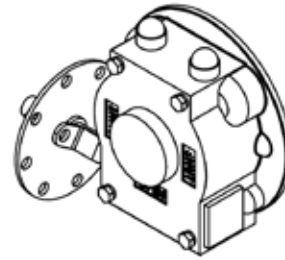
JFWB-2 BILL OF MATERIALS & DIMENSIONS

No	Part Name	Material
1	Gearbox	Ductile Iron ASTM A536 65-45-12
2	Worm Gear	Ductile Iron ASTM A536 65-45-12
3	Cap	Ductile Iron ASTM A536 65-45-12
4	Worm	Carbon Steel C45/ASTM A29 104S
5	Worm Shaft	Carbon Steel C45/ASTM A29 104S
6	Bearing	Hardened Steel
7	Bushing	SF-1
8	Oil Seal	NBR
9	Set Screw	Carbon Steel
10	O-Ring	NBR
11	Spring Washer	Carbon Steel
12	Bolt	Carbon Steel
13	Position Indicator	ABS
14	Screw	Carbon Steel
15	Limit & Topbolt	Carbon Steel
16	O-Ring	NBR
17	Washer	Carbon Steel
18	Limit Stop Nut	Carbon Steel
19	Screw Cap	ABS

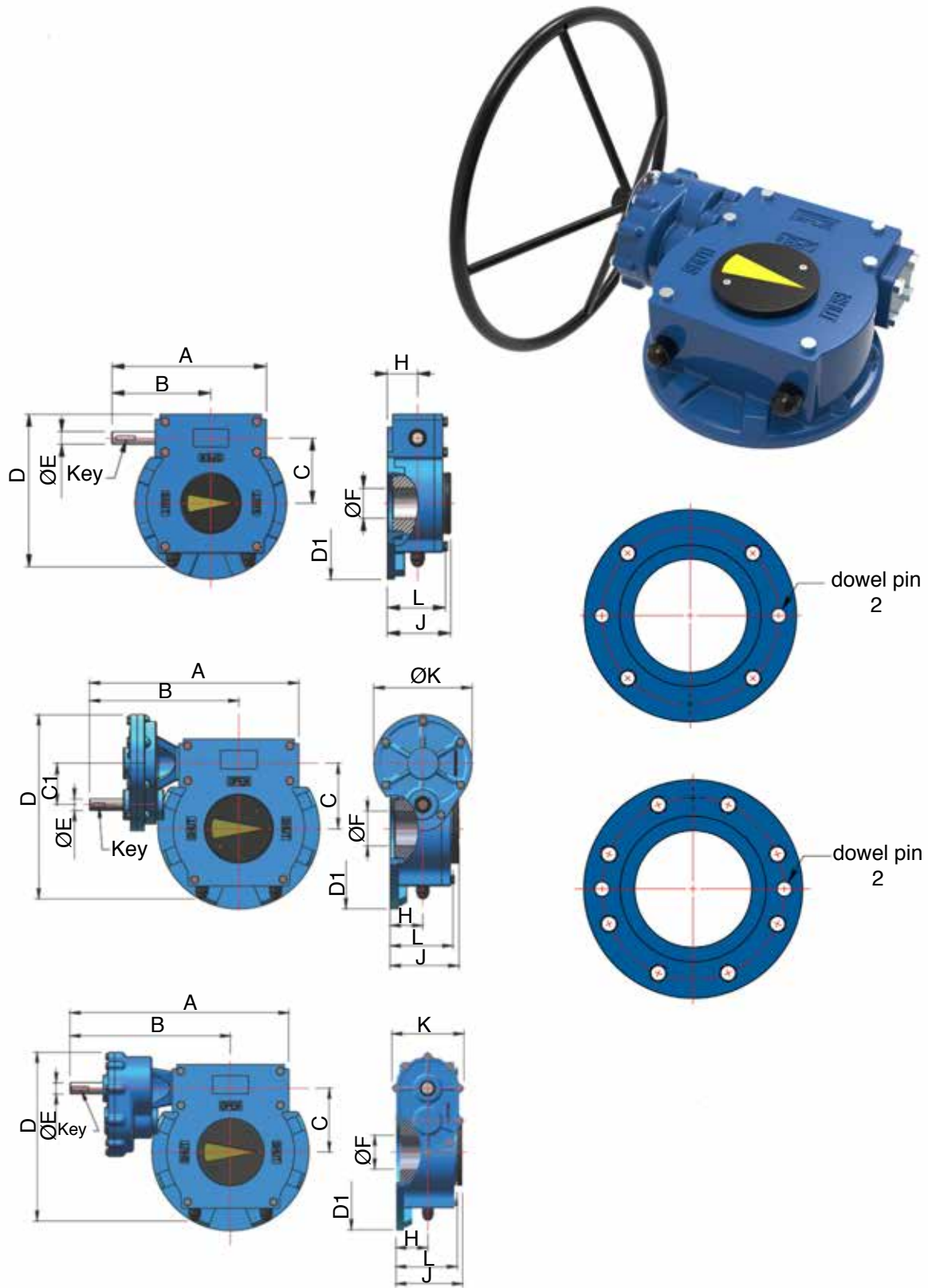


JFWB-5 BILL OF MATERIALS & DIMENSIONS

No	Part Name	Material
1	Gearbox	Ductile Iron ASTM A536 65-45-12
2	Worm Gear	Ductile Iron ASTM A536 65-45-12
3	Cap	Ductile Iron ASTM A536 65-45-12
4	Worm	Carbon Steel C45/ASTM A29 104S
5	Worm Shaft	Carbon Steel C45/ASTM A29 104S
6	Bearing	Hardened Steel
7	Bushing	SF-1
8	Oil Seal	NBR
9	Set Screw	Carbon Steel
10	O-Ring	NBR
11	Spring Washer	Carbon Steel
12	Bolt	Carbon Steel
13	Position Indicator	ABS
14	Screw	Carbon Steel
15	Limit & Topbolt	Carbon Steel
16	O-Ring	NBR
17	Washer	Carbon Steel
18	Limit Stop Nut	Carbon Steel
19	Screw Cap	ABS



JFWB DIMENSIONS



JFWB Series Gear Operators

JFWB SPECIFICATIONS

Type	Model	Ratio	Max. Stem Dia.	Output	Input	M.A. ± 15	Flange	D1	L Max	A	B	C	C1	D	E	H	J	K	Key	HW
				Torque in/lbs																
	JFWB-2	37:1	NA	2921	266	10	PLEASE SEE PAGE 4													
	JFWB-5	38:1	NA	4600	440	11	PLEASE SEE PAGE 5													
A	JFWB20	37:1	28	2921	266	11	F07	3.5	2.2	7.3	5.3	2.0		5.5	0.6	1.1	2.5	-	0.24	8
							F10	4.9												
	JFWB21	38:1	36	7523	664	11	F10	4.9	2.7	7.9	5.6	2.4		6.4	0.6	1.4	2.9	-	0.24	12
							F12	5.9												
							F14	6.9												
	JFWB30	40:1	45	11948	8850	12	F14 (F12)	6.9	3.3	8.6	6.0	3.1	-	8.0	0.8	1.8	3.7	-	0.24	14
							F16	8.3												
	JFWB55	47:1	55	156645	1257	14	F14	6.9	3.3	9.5	6.4	3.5	-	8.8	0.8	2.0	3.9	-	0.24	16
							F16	8.3												
	JFWB88	61:1	65	26550	1451	18	F16	8.3	3.6	11.	7.6	4.4	-	11	0.8	2.2	4.5	-	0.24	20
							F20	10.2												
							F25	11.8												
JFWB8-BR2.5	130:1	65	35400	1071	33	F16	8.3	3.6	14	10.6	4.4	2.0	11	0.8	2.2	4.5	4.1	0.24	20	
						F20	10.2													
						F25	11.8													
JFWB195-BR2.5	130:1	80	44250	1336	33	F16	8.3	4.1	15.	11.1	5.1	2.0	12	0.8	2.4	4.9	4.1	0.24	24	
						F20	10.2													
						F25	11.8													
JFWB195-BR3.2	167:1		57525	1354	43	F16	8.3	4.1	19	13	6.2	3.5	16.	1.0	2.8	6.0	8.3	0.31	24	
						F20	10.2													
						F25	11.8													
JFWB300-BR5	290:1	95	84075	1133	74	F25	11.8	4.1	19	13	6.2	3.5	16.	1.0	2.8	6.0	8.3	0.31	24	
						F30	13.8													
JFWB300-BR6	348:1	95	97350	1292	75	F25	11.8	4.1	20	14	6.2	-	25.	1.0	2.8	6.0	6.3	0.31	24	
						F30	13.8													
						F30 (F25)	13.8													
JFWB680-BR6	372:1	110	119475	1478	81	F30 (F25)	13.8	4.1	22	15	7.2	-	17	1.0	2.8	6.1	6.3	0.31	24	
JFWB680-BR8	519:1		141600	1257	112	F30 (F25)	13.8													



4665 Interstate Drive
Cincinnati, OH 45246
513-731-2900
jflowcontrols.com

While the information and specifications contained in this literature are believed to be accurate, they are supplied for informative purposes only and should not be considered certified or a guarantee of satisfactory results. Nothing contained herein is to be construed as a warranty or guarantee, express or implied, regarding any matter with respect to this product. Because J Flow Controls® is continually improving and upgrading its product design, the specifications, dimensions and information contained herein are subject to change without notice.