

AUTOMATION ACCESSORIES PRODUCT OVERVIEW

QUALITY | EXPERTISE | PRODUCT RANGE

JFC SERIES

Pneumatic Spring Return and Double Acting Actuators

17 models

Torques to over 100,000 in/lbs

SIL 3 / ATEX / CE

Compact and light

High cycle life

Field reversible rotation

Dual piston rack & pinion design for compact construction

ISO 5211 - namur mounted

DA: 32 in/lbs - 109,072 in/lbs

SR: 52 in/lbs - 36,661 in/lbs spring break



JSS SERIES

Stainless Steel Rack & Pinion Pneumatic Actuator

Double acting & spring return models spanning 10 sizes

Available in 304SST or 316SST

Torques to over 50,000 in/lbs

VDI / VDE - 3845

ISO 5211

Standard accessory mounting NAMUR & VDE/VDE-3845

Operating media: clean, dry air; noncorrosive gas; light hydraulic oil

Custom mounting configurations available in quantity

FMK seals available for high-temperature applications

Maximum working pressure 120 psi

JFS SERIES

Scotch Yoke Pneumatic Actuator

SIL 3, ATEX, CE

Each body module can choose different cylinder modules and spring modules to meet the various needs of torque

Spring return models in excess of 3,000,000 lbs/in

Double acting models 12,581 - 6,000,000 in/lbs

Pneumatic operating pressure: 40 psi - 200 psi

Ambient temperature: -40°F to +175°F

Corrosion and water resistant

Safe field maintenance



JFD SERIES

Spring Diaphragm Actuators

Compact, precise control

Field changeable fail open and fail closed

Three different sizes are available for actuation up through 12" DM9900F

Series segmented V-ball control valves

ISO 5211

Namur accessory mounting drill top and bottom

High cycle design

Low maintenance, corrosion resistant

Field reversible

Wide range of springs; 40 psi, 60 psi 80 psi

135 in/lbs - 7,095 in/lbs

ELECTRIC ACTUATORS

JFEW SERIES

Electric Actuators
Type 4, 4X Weather proof
Wide torque range
CSA & CE approved

Compact and light weight

ISO 5211

Wide range of voltage: 24VDC, 24VAC/1PH, 120 VAC/1PH, 220VAC/1PH,
160/480VAC/3PH

Compartment heater with thermostat for condensation control

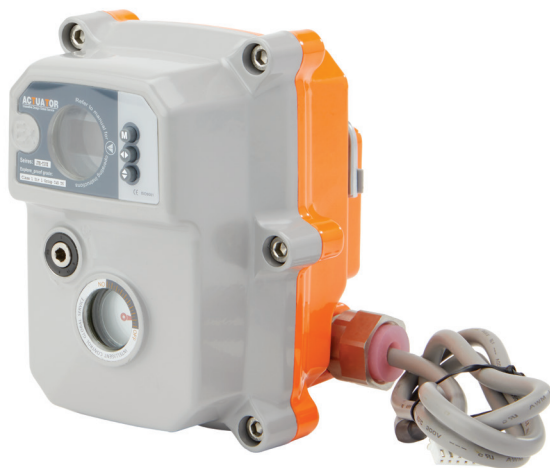
Manual override standard

Battery back up and 100% duty cycle available



JFE-T20X/C20X SERIES

Fail Safe Super Capacitor Electric Actuator
1.3" OLED display with pushbutton operation
On/off, two and three position control



NEMA 7 Explosion proof

High performance brushless motor

Ball bearing design for high cycle application

Self locking worm drive electric actuator

Modbus RS485, Canbus 2.0B

12 and 24 VDC is 100% duty

JFEX SERIES

Explosion Proof Electric Actuators

CSA & CE approved NEMA 7 explosion proof, Class I, Div I, Groups C & D

Optional high resolution proportional control until with 450 points of resolution

Compact and light weight

ISO 5211

Wide range of voltage: 24VDC, 24VAC/1PH, 120 VAC/1PH, 220VAC/1PH, 440/460/480VAC/3PH

Compartment heater with thermostat for condensation control

Self locking provided by double worm gearing

Standard auxiliary limit switches (SPDT x 2Ea 250VAC 10A rating)



JFEC,N,T SERIES

Electric Actuator

NEMA 4, 4X

Dome indicator for open & close



Torque 177 in/lbs to 974 in/lbs

Brushless motor

100% duty is available

Visual dome indicator

Bright OLED screen

Push button local control

Failsafe super capacitor

ELECTRIC ACTUATORS

BOILER FEEDWATER SERIES

Push button local control
Bright OLED screen

Compact

NEMA 4, 4X and 7 explosion proof is available

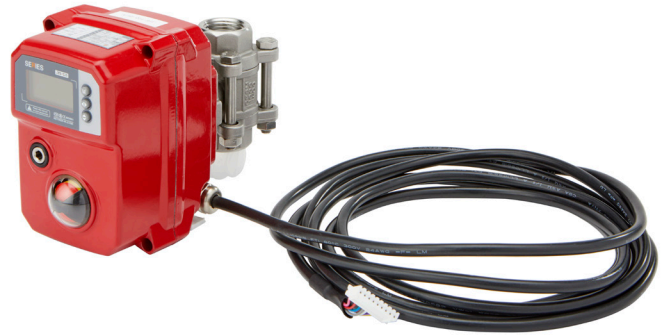
Highly precise

Continuously modulating actuators

100% duty

0-135 Ohm 24 VDC standard (other voltages available)

Failsafe super compactor is available



IQL SERIES

Linear Electric Actuators
Wide thrust range (from 900 lbs to 5600 lbs)
CE certified IP66 / NEMA 4, 4X
Optional high resolution proportional control unit

Waterproof IP66 (NEMA 4 & 6) and optional watertight IP68

Compact and lightweight

Wide range of voltage: 24 VDC, 24VAC/1PH, 120VAC/1PH, 220VAC/1PH, 440VAC/3PH

ISO 5211

Reliable mechanical thrust sensing system providing safe operation in an overload condition

Standard auxiliary limit switches (SPDT x 2EA 250VAC 10A rating)

Battery back up and 100% duty available

ITM SERIES

Multi-Turn Electric Actuators
Wide thrust and torque ranges
CE certified IP66 / NEMA 4, 4X
Optional proportional control unit

High efficiency & torque motor with thermal protectors

Digitalized torque sensing system - adjustable range: 30% - 100%

Top-mounted handwheel for easy operation

Mounting base according to ISO 5211

Remote control for setting device/tool

Available in explosion proof

440-480 VAC / 3 Phase; optional proportional control unit



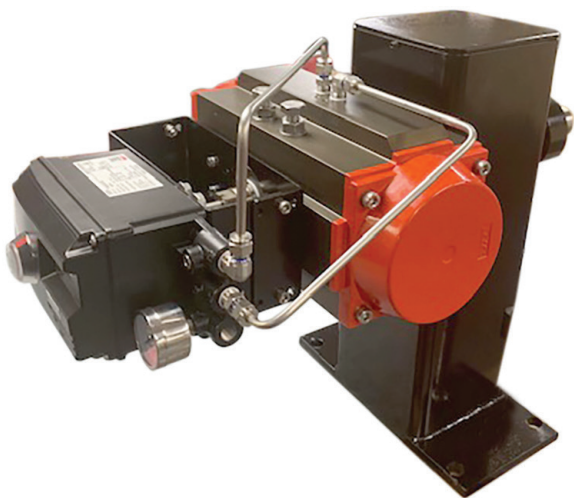
FLOOR DRIVE SERIES

Great choice for operating dampers, vanes & fan control

Available in on-off pneumatic

Available for modulating on pneumatic

Can mount electric actuators 24VDC, 220VAC, 120VAC 1Phase,
440/460/480 volt 3Phase



LIMIT SWITCHES

JFS ALS30 SERIES

NEMA 7 Limit Switches for Hazardous Locations
FM approved

FM approved explosion proof Class 1, Division 1, Groups C & D

Dual 3/4" NPT cable entries are approved

-40°F to +140°F; Class II, III, Division 1, Groups E, F & G

Flameproof EX db IIC, T5, Gb with ingress protection IP67

2 SPDT switches for indicator of fully open and fully closed positions

Powder coated aluminum housing with high visibility beacon indicator



JFS-310-N SERIES

Type 4, 4X, IP67 Limit Switches for General Locations
2x SPDT switches for indication of fully open and fully closed positions

2 SPDT switches for indication of fully open fully closed positions

Powder coated aluminum housing with high visibility beacon indicator

Captive cover bolts are safety retained during installation & maintenance

Quick-set cams - spring loaded splined cams are easily adjustable with no tools required

Dual 1/2" NPT cable entries are provided

Ambient temperature: -4°F to +176°F

Position indicator: 0 - 90°

JFS-210-N SERIES

Type 4, 4X, IP67 Limit Switches for General Locations
2x SPDT switches for indication of fully open and fully closed positions

NEMA 4, 4X, IP67

2 SPDT switches for indication of fully open and fully closed

Powder coated aluminum housing with high visibility beacon indicator

Captive bolts

Quick set cams

Dual 1/2" NPT cable entries



SOLENOIDS

SV61 SERIES

Solenoid, NEMA 4, 4-way

Can be wired directly into the limit switch box, eliminating junction box
Dual coils, two position & three position, 12 VDC, 24VDC, 24VAC, 220VAC, 120VAC and high-temperature coils

Extruded aluminum body with NBR seal

120/60/1 coil with IP67 rating

Manual override

1/4" NPT exhaust port

1/2" NPT conduit connection

Operating temperature: -40°F to +140°F

Operating Pressure: 20 to 120 psi



SV71 SERIES

Solenoid, NEMA 7, intrinsically safe, 3-way & 4-way

The solenoid can be wired into the limit switch to eliminate junction box
Dual coils, two position & three position, 12 VDC, 24VDC, 24VAC, 220VAC, 120 VAC and high-temperature coils
ATEX certified, SIL 3

Extruded aluminum body with NBR seal

Nass Magnetics I.S. Coil

Manual override

1/4" NPT exhaust port

1/2" NPT conduit connection

Operating temperature: -40°F to +158°F

Operating Pressure: 20 to 120 psi

CE certified

SV91 SERIES

Solenoid NEMA 7 - 3/2 & 5/2, 3-way & 4-way
Solenoid can be wired into the limit switch to eliminate junction box
Dual coils, two position & three position, 12 VDC, 24VDC, 24VAC, 220VAC, 120VAC and high-temperature coils

Extruded aluminum body with NBR seal

Nass Magnetics NEMA 7/9 coil

Manual override

1/4" NPT exhaust port

1/2" NPT conduit connection

Operating temperature: -4°F to +158°F

Operating Pressure: 20 to 120 psi



ASCO 8551 SERIES

Asco Solenoid
12VDC, 24VDC, 24VAC, 220VAC, 120VAC and high-temperature coils
UL and CSA solenoid approved
UL General Purpose valve



Compact spool valve with threaded port connections

All exhaust ports are pip-able

Provides better protection against harsh environments

Standard manual operator

DIN, watertight and explosion-proof solenoids available

Single and dual solenoid construction

Mountable in any position

TS100 SERIES

Volume Booster

One-to-one signal to output supply air

When used with a positioner/actuator, it is a control device to increase the stroking speed of control valves

Adjustable sensitivity control meets various control valve requirements

Soft seats provide tight shut off to reduce unnecessary air consumption

Small size and weight - can be installed directly inline

Optional available for high and low temperature

Simplified maintenance



TS200 SERIES

Pneumatic Lock Up Valve

Shuts off signal pressure line either when the air supply falls below an adjusted value or upon complete air supply failure

Quick response and high precision

Easy set-up of lock up air pressure

When the signal pressure is more than the set pressure, it allows to open the air pressure line automatically

Small size and light weight - can be installed in the direct pipe fitting line

Options available for high and low temperature

Insensitive to vibrations



TS300 SERIES

Air Filter Regulator

Provide pneumatic measuring and control equipment with a constant air supply

Removes oil, water, and particles from compressed air

Excellent flow and regulation characteristics

Filter and regulator in one compact unit

Easy installation repair and replacement

2 gauge port allows you to select installation direction

5 micron filter



TS600 SERIES

Electro-pneumatic Valve Positioner

Controls the valve stroke in response to input signal of 4-20mA from control panel, DCS or calibrator



By-pass valve (A/M switch) installed

Fast response time, durability and excellent stability

Simple zero and span adjustment

IP 66 enclosure

Easy maintenance due to built-in module type

Strong to vibrations and no resonance between 5 - 200 Hz

Optional transmitter

TS800 SERIES

Smart Valve Positioner

Controls valve stroke in response to input signal of 4-20mA from control panel, DCS or calibrator

LCD and 4 button local control

Quick and easy calibration

PST and alarm function

Auto/manual switch included

Built-in self-diagnostic function

IP66 / NEMA 4X

Strong vibration resistance and impact resistance

Optional: transmitter, 2 (SPDT) mechanical limit switches, HART rotary or linear configuration



TS900 SERIES

Smart Valve Positioner, Explosion Proof

Controls the valve stroke in response to an input signal of 4-20mA from the control panel, DCS or calibrator



Quick and easy auto calibration

Large flow pilot valve (over 100 LPM)

By-pass valve (A/M switch installed)

HART communication (HART 7)

Limit switch (mechanical or proximity type)

Partial stroke test (PST) function

Alarm function

Self diagnostic

Optional: transmitter, 2 end of travel limit switches, HART rotary or linear configuration

JFDG SERIES

Declutchable Wormgears

Lightweight aluminum construction with corrosion resistance powder coating

Direct mount to JFC Series rack and pinion actuators

Optional block & bleed relief valve can be fitted onto the actuator in order to evacuate air pressure from actuator prior to engaging the manual override

Small size, light weight, novel style

Product serialization, the output torque parameters, are easily matched with pneumatic actuators and a variety of valves

Large torque mechanism : 700 in/lbs to 33,600 in/lbs

Lift the limit pin, rotate the eccentric device limit of 90° and automatically achieve pneumatic drive

ISO 5211 connection standards

IP68 sealing



JFG SERIES

Manual Wormgears

Light weight aluminum construction with corrosion resistance powder coating

Visual dome indicator

Internal limit switches, lockable handwheel, custom colors

EN ISO 5210 and DIN 3210

90° travel has +- 5 degree of adjust ability

Working temperature of -40°F to +250°F

Max torque output range from 1600 in/lbs to 10,600 in/lbs

Compact size, high mechanical efficiency

IP68 sealing





4665 Interstate Drive
Cincinnati, OH 45246
513.731.2900
sales@jflowcontrols.com
www.jflowcontrols.com