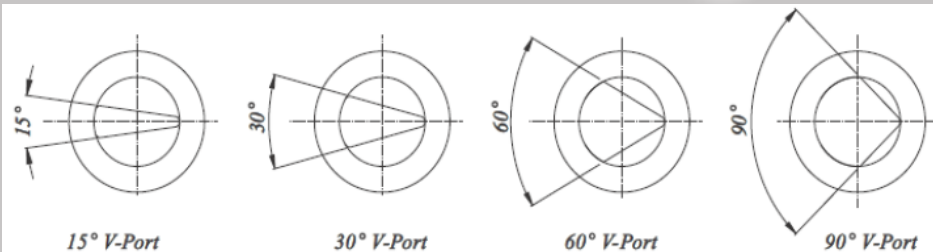




STANDARDS

- CRN registered
- Valve Design: ASME B16.34
- Steel Casting: MSS SP-55
- Face-to-face: ASME B16.10
- Flange Connection: ASME B16.50
- Pressure Test: API 598 (ISO 5208)
- TA-Luft Low Emission
- Valve Marking: MSS SP-25
- Sulfide Stress Cracking: NACE MR-01-75



J Flow Controls **OBDM2500/OB2500 Series** Direct Mount 2 Piece Flanged V-Ball Valve

FEATURES & BENEFITS

- Body & end caps quality investment
- Available in Stainless & Carbon Steel (1/2" - 12")
- ISO 5211 mounting pad; Direct mount 150 Class
- Adjustable stem packing
- Blow-out proof stem design
- 100% air tested under water at 80 - 100 psi
- Working pressure of Class 150 / 300
- Temperature range: -320°F to 800°F
- Fire safe: API 607 5th Edition - option
- Spring (dead man) handle - option
- PTFE cavity filler (option)
- PTFE / PFA coating (40-70 um) - option
- V-ball for control valve in 15°, 30°, 60°, 90°, slot, custom
- Cryogenic valves, metal seated valves, metal seated

APPLICATIONS & INDUSTRIES

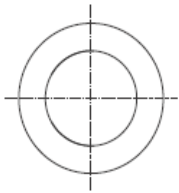
- Chemical & petrochemical
- HVAC applications
- Power generation plants
- Pulp & paper plants
- Ship building industries
- Fiber industries
- Steel & iron industries
- Coal & mining industries
- Food industries
- LNG, HRSG industries
- Oil refinery industries
- Desalination industries

V-Control Ball Valve Flow Coefficient Cv Charts

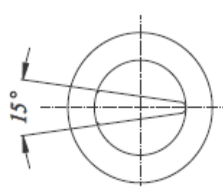
| Valve Size | V-Port Angle | Percent and Angle of Ball Rotation | | | | | | | | | | |
|------------|--------------|------------------------------------|-----------|------------|------------|------------|------------|------------|------------|------------|------------|-------------|
| | | 0% 0° | 10% 9° | 20% 18° | 30% 27° | 40% 36° | 50% 45° | 60% 54° | 70% 63° | 80% 72° | 90% 81° | 100% 90° |
| 1/2" | 15° | 0 | 0.04 | 0.17 | 0.43 | 0.68 | 0.98 | 1.62 | 2.09 | 2.84 | 3.61 | 4.18 |
| 1/2" | 30° | 0 | 0.04 | 0.23 | 0.47 | 0.77 | 1.19 | 1.83 | 2.47 | 3.43 | 4.65 | 5.55 |
| 1/2" | 60° | 0 | 0.04 | 0.28 | 0.73 | 1.11 | 1.83 | 2.92 | 4.29 | 7.00 | 9.43 | 12.78 |
| 1/2" | 90° | 0 | 0.06 | 0.47 | 0.85 | 1.28 | 2.05 | 3.24 | 4.74 | 8.26 | 11.61 | 14.72 |
| 3/4" | 15° | 0 | 0.05 | 0.20 | 0.51 | 0.88 | 1.30 | 2.13 | 2.75 | 3.74 | 4.75 | 5.51 |
| 3/4" | 30° | 0 | 0.07 | 0.30 | 0.61 | 0.99 | 1.57 | 2.42 | 3.25 | 4.52 | 6.12 | 7.30 |
| 3/4" | 60° | 0 | 0.07 | 0.35 | 0.93 | 1.46 | 2.42 | 3.85 | 5.64 | 9.21 | 12.41 | 16.25 |
| 3/4" | 90° | 0 | 0.08 | 0.59 | 1.11 | 1.69 | 2.69 | 4.27 | 6.24 | 10.85 | 15.28 | 19.37 |
| 1" | 15° | 0 | 0.06 | 0.30 | 0.93 | 1.49 | 2.31 | 3.75 | 4.67 | 6.47 | 8.46 | 9.84 |
| 1" | 30° | 0 | 0.08 | 0.45 | 1.25 | 2.06 | 3.54 | 5.30 | 7.70 | 10.49 | 12.84 | 15.48 |
| 1" | 60° | 0 | 0.09 | 0.68 | 1.74 | 2.78 | 5.13 | 8.00 | 11.88 | 18.71 | 23.22 | 32.81 |
| 1" | 90° | 0 | 0.11 | 0.93 | 2.78 | 5.09 | 7.74 | 12.20 | 17.33 | 24.48 | 26.79 | 43.89 |
| 1-1/4" | 15° | 0 | 0.03 | 0.27 | 0.83 | 1.64 | 2.78 | 4.07 | 5.88 | 7.99 | 10.81 | 12.82 |
| 1-1/4" | 30° | 0 | 0.05 | 0.48 | 1.37 | 2.47 | 4.12 | 6.08 | 8.82 | 11.76 | 14.87 | 17.37 |
| 1-1/4" | 60° | 0 | 0.07 | 0.67 | 2.04 | 3.41 | 6.47 | 10.80 | 15.39 | 22.35 | 33.37 | 43.45 |
| 1-1/4" | 90° | 0 | 0.08 | 0.78 | 2.92 | 5.41 | 10.23 | 17.28 | 19.48 | 34.93 | 51.76 | 65.81 |
| 1-1/2" | 15° | 0 | 0.05 | 0.37 | 1.15 | 2.26 | 3.82 | 5.59 | 8.08 | 10.99 | 14.86 | 17.62 |
| 1-1/2" | 30° | 0 | 0.07 | 0.65 | 1.88 | 3.39 | 5.66 | 8.36 | 12.12 | 16.17 | 20.44 | 23.88 |
| 1-1/2" | 60° | 0 | 0.09 | 0.92 | 2.81 | 4.69 | 8.89 | 14.85 | 21.16 | 30.73 | 45.88 | 59.74 |
| 1-1/2" | 90° | 0 | 0.10 | 1.07 | 4.01 | 7.44 | 14.06 | 23.76 | 26.78 | 48.03 | 71.17 | 90.49 |
| 2" | 15° | 0 | 0.06 | 0.69 | 2.23 | 4.45 | 7.24 | 10.68 | 15.38 | 21.39 | 28.75 | 34.69 |
| 2" | 30° | 0 | 0.09 | 1.18 | 3.79 | 7.53 | 12.26 | 17.83 | 26.44 | 36.45 | 48.09 | 55.85 |
| 2" | 60° | 0 | 0.11 | 1.51 | 5.80 | 10.39 | 20.60 | 33.98 | 48.75 | 69.04 | 104.23 | 135.75 |
| 2" | 90° | 0 | 0.16 | 1.89 | 7.28 | 13.58 | 25.38 | 42.30 | 55.56 | 87.04 | 129.75 | 167.34 |
| 2-1/2" | 15° | 0 | 0.07 | 0.77 | 2.40 | 5.23 | 8.06 | 11.73 | 16.42 | 22.31 | 27.24 | 31.30 |
| 2-1/2" | 30° | 0 | 0.09 | 1.15 | 4.42 | 7.91 | 13.39 | 20.05 | 30.43 | 41.92 | 69.75 | 76.95 |
| 2-1/2" | 60° | 0 | 0.13 | 1.46 | 5.91 | 11.90 | 23.24 | 37.92 | 59.31 | 83.29 | 113.65 | 162.50 |
| 2-1/2" | 90° | 0 | 0.17 | 1.83 | 7.29 | 16.45 | 31.16 | 53.53 | 77.89 | 118.29 | 177.32 | 239.45 |
| 3" | 15° | 0 | 0.08 | 0.89 | 2.96 | 6.65 | 9.58 | 13.42 | 19.47 | 26.67 | 31.79 | 38.31 |
| 3" | 30° | 0 | 0.12 | 1.20 | 4.15 | 9.49 | 15.96 | 26.78 | 38.91 | 53.31 | 69.77 | 85.91 |
| 3" | 60° | 0 | 0.15 | 2.89 | 6.70 | 15.82 | 29.36 | 46.32 | 73.60 | 106.74 | 149.88 | 193.20 |
| 3" | 90° | 0 | 0.20 | 4.12 | 8.65 | 21.09 | 41.09 | 69.27 | 105.91 | 161.04 | 237.23 | 359.21 |
| 4" | 15° | 0 | 0.11 | 1.40 | 3.73 | 8.86 | 16.76 | 27.91 | 41.85 | 59.24 | 75.49 | 96.37 |
| 4" | 30° | 0 | 0.16 | 1.75 | 7.84 | 18.59 | 35.21 | 58.60 | 87.89 | 124.41 | 158.53 | 196.35 |
| 4" | 60° | 0 | 0.26 | 2.20 | 12.44 | 33.67 | 62.98 | 106.26 | 160.49 | 233.96 | 329.50 | 437.29 |
| 4" | 90° | 0 | 0.35 | 4.37 | 19.68 | 50.29 | 91.83 | 157.43 | 240.51 | 365.15 | 546.62 | 830.86 |
| 6" | 15° | 0 | 0.20 | 2.50 | 6.64 | 15.77 | 29.85 | 49.70 | 74.54 | 105.51 | 134.44 | 171.62 |
| 6" | 30° | 0 | 0.29 | 3.12 | 13.97 | 33.11 | 62.70 | 104.37 | 156.53 | 221.56 | 282.33 | 349.69 |
| 6" | 60° | 0 | 0.46 | 5.41 | 22.15 | 59.97 | 112.16 | 189.24 | 285.82 | 416.68 | 586.83 | 800.80 |
| 6" | 90° | 0 | 0.66 | 7.79 | 35.05 | 89.56 | 163.55 | 280.37 | 428.34 | 650.32 | 973.50 | 1479.70 |
| 8" | 15° | 0 | 0.34 | 4.23 | 11.32 | 26.84 | 50.80 | 84.58 | 126.84 | 395.03 | 503.35 | 292.07 |
| 8" | 30° | 0 | 0.49 | 5.32 | 23.77 | 56.35 | 106.70 | 177.62 | 266.39 | 377.06 | 480.47 | 595.11 |
| 8" | 60° | 0 | 0.79 | 6.66 | 23.81 | 102.06 | 190.87 | 322.06 | 486.41 | 709.11 | 998.69 | 1325.38 |
| 8" | 90° | 0 | 1.05 | 13.26 | 59.64 | 152.42 | 278.33 | 477.14 | 728.96 | 1106.69 | 1656.77 | 2518.18 |
| 10" | 15° | 0 | 0.53 | 6.62 | 17.69 | 41.94 | 79.38 | 132.15 | 198.20 | 617.24 | 786.48 | 456.36 |
| 10" | 30° | 0 | 0.77 | 8.31 | 37.14 | 88.05 | 166.73 | 277.53 | 416.24 | 589.16 | 750.74 | 929.87 |
| 10" | 60° | 0 | 1.23 | 10.41 | 37.20 | 159.47 | 298.23 | 503.22 | 760.02 | 1107.99 | 1560.45 | 2070.90 |
| 10" | 90° | 0 | 1.64 | 20.72 | 93.20 | 238.16 | 434.90 | 745.53 | 1139.00 | 1729.20 | 2588.70 | 3934.65 |
| 12" | 15° | 0 | 0.74 | 9.26 | 24.76 | 58.72 | 111.13 | 185.01 | 277.47 | 864.13 | 1101.07 | 638.90 |
| 12" | 30° | 0 | 1.07 | 11.63 | 52.00 | 123.27 | 233.42 | 388.54 | 582.73 | 824.82 | 1051.03 | 1301.81 |
| 12" | 60° | 0 | 1.72 | 14.57 | 52.08 | 223.25 | 417.52 | 704.51 | 1064.03 | 1551.19 | 2184.63 | 2899.26 |
| 12" | 90° | 0 | 2.29 | 29.00 | 130.47 | 333.42 | 608.85 | 1043.74 | 1594.59 | 2420.88 | 3624.18 | 5508.51 |

V-Control Ball Valve Flow Coefficient Cv Charts (Full Port -Round Ball)

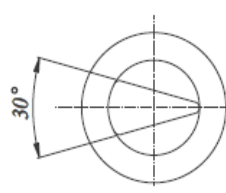
| Valve Size | Percent and Angle of Ball Rotation | | | | | | | | | | |
|------------|------------------------------------|-----------|------------|------------|------------|------------|------------|------------|------------|------------|-------------|
| | 0% 0° | 10% 9° | 20% 18° | 30% 27° | 40% 36° | 50% 45° | 60% 54° | 70% 63° | 80% 72° | 90% 81° | 100% 90° |
| 1/2" | 0 | 0 | 0 | 0.7 | 3.7 | 7.8 | 12.6 | 17.9 | 23.3 | 28.6 | 32 |
| 3/4" | 0 | 0 | 0 | 2.5 | 7.7 | 14.2 | 21.7 | 29.7 | 38.0 | 46.2 | 54 |
| 1" | 0 | 0 | 1.2 | 8.6 | 19.4 | 32.4 | 46.7 | 61.9 | 73.3 | 92.4 | 105 |
| 1-1/4" | 0 | 0 | 5.3 | 20.7 | 41.3 | 65.4 | 91.7 | 119.3 | 147.2 | 174.5 | 200 |
| 1-1/2" | 0 | 0 | 3.4 | 22.7 | 50.7 | 83.9 | 120.8 | 159.7 | 199.4 | 238.4 | 275 |
| 2" | 0 | 0 | 15.5 | 54.8 | 106.6 | 166.6 | 232.0 | 300.4 | 369.5 | 437.0 | 500 |
| 2-1/2" | 0 | 0 | 25.8 | 87.6 | 168.6 | 262.1 | 363.9 | 470.2 | 577.5 | 682.3 | 780 |
| 3" | 0 | 0 | 33.8 | 123.7 | 242.7 | 380.8 | 531.5 | 689.3 | 848.7 | 1004.5 | 1150 |
| 4" | 0 | 7.5 | 118.9 | 296.2 | 516.2 | 766.5 | 1035.8 | 1314.3 | 1592.7 | 1861.8 | 2100 |
| 6" | 0 | 0 | 224.3 | 631.8 | 1149.9 | 1746.3 | 2392.5 | 3064.2 | 3738.8 | 4393.3 | 5000 |
| 8" | 0 | 63.7 | 600.7 | 1416.3 | 2418.3 | 3552.3 | 4768.2 | 6023.1 | 7275.9 | 8485.1 | 9600 |
| 10" | 0 | 184.2 | 1085.2 | 2381.6 | 3950.9 | 5712.4 | 7591.5 | 9523.9 | 11447.0 | 13298.4 | 15000 |
| 12" | 0 | 139.3 | 1314.0 | 3046.4 | 5290.0 | 7770.7 | 10430.5 | 13175.6 | 15916.1 | 18561.2 | 21000 |



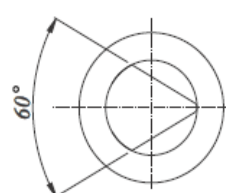
Straight Port



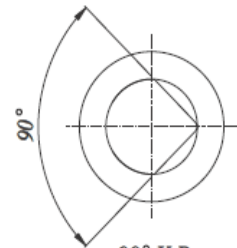
15° V-Port



30° V-Port



60° V-Port

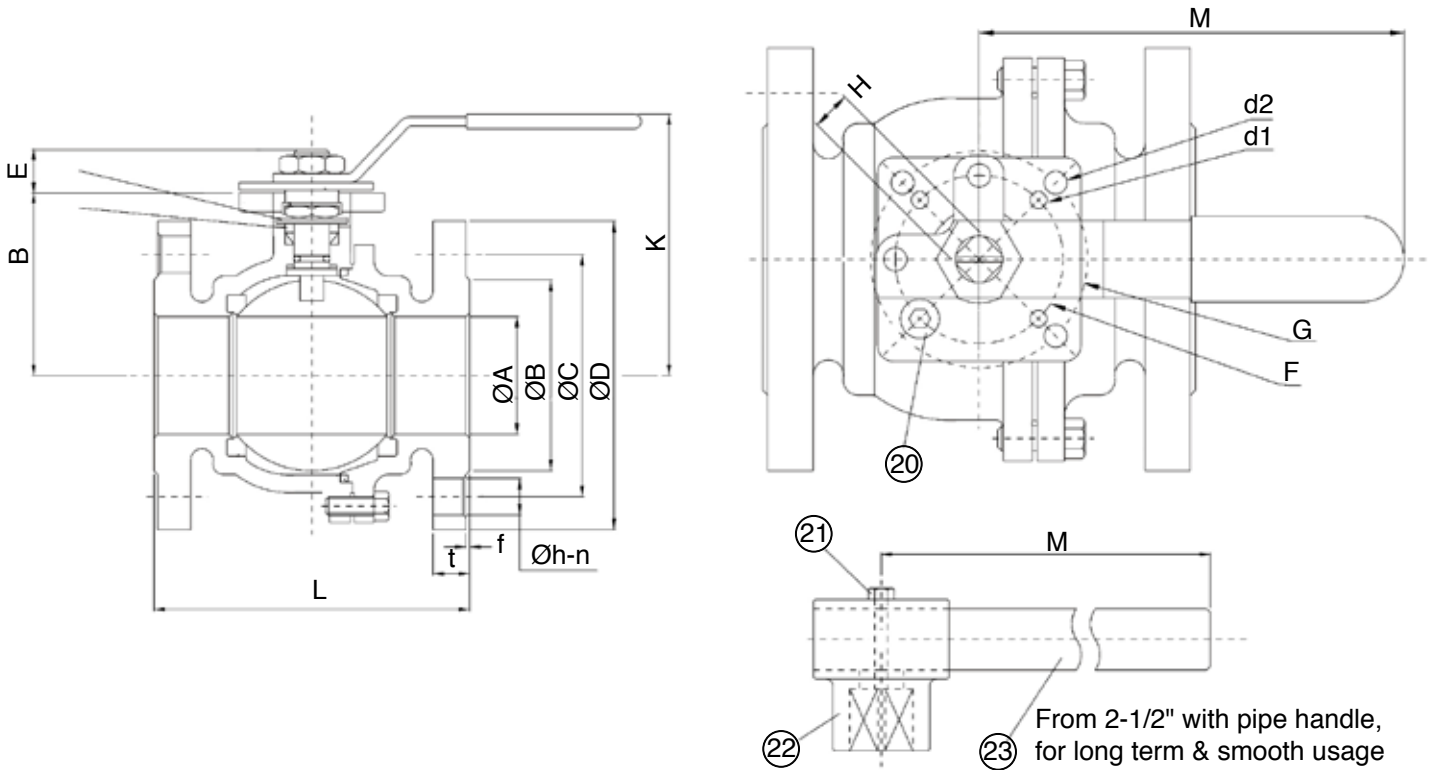


90° V-Port



OBDM2500 Flanged Valves

DIMENSIONS ANSI 150 (1/2" - 4")



| Size (in) | A | B | E | L | H | K | M | F | G | d1 | d2 | Class 150# Flanged Dimensions | | | | | | | Wt Lbs |
|-----------|------|------|------|------|-------|------|-------|------|------|-------|-------|-------------------------------|------|------|---|------|------|------|--------|
| | | | | | | | | | | | | D | C | h | N | t | g | f | |
| 1/2 | 0.59 | 1.89 | 0.43 | 4.25 | 0.354 | 3.15 | 5.12 | 1.42 | 1.65 | 0.236 | 0.236 | 3.50 | 2.38 | 0.63 | 4 | 0.45 | 1.38 | 0.06 | 3.8 |
| 3/4 | 0.79 | 2.09 | 0.43 | 4.61 | 0.354 | 3.15 | 5.12 | 1.42 | 1.65 | 0.236 | 0.236 | 3.86 | 2.76 | 0.63 | 4 | 0.45 | 1.69 | 0.06 | 4.7 |
| 1 | 0.98 | 2.32 | 0.55 | 5.00 | 0.433 | 3.54 | 6.50 | 1.65 | 1.97 | 0.236 | 0.276 | 4.25 | 3.13 | 0.63 | 4 | 0.45 | 2.01 | 0.06 | 6.4 |
| 1-1/4 | 1.26 | 2.80 | 0.55 | 5.51 | 0.433 | 4.02 | 6.50 | 1.65 | 1.97 | 0.236 | 0.276 | 4.61 | 3.50 | 0.63 | 4 | 0.50 | 2.52 | 0.06 | 8.8 |
| 1-1/2 | 1.50 | 2.99 | 0.71 | 6.50 | 0.551 | 4.33 | 8.07 | 1.97 | 2.76 | 0.276 | 0.362 | 5.00 | 3.88 | 0.63 | 4 | 0.56 | 2.87 | 0.06 | 13 |
| 2 | 1.97 | 3.35 | 0.71 | 7.01 | 0.551 | 4.72 | 8.07 | 1.97 | 2.76 | 0.276 | 0.362 | 5.98 | 4.74 | 0.75 | 4 | 0.63 | 3.62 | 0.06 | 19 |
| 2-1/2 | 2.56 | 3.68 | 0.91 | 7.48 | 0.669 | 5.51 | 11.81 | 2.76 | 4.02 | 0.362 | 0.449 | 7.01 | 5.49 | 0.75 | 4 | 0.70 | 4.13 | 0.06 | 29 |
| 3 | 3.15 | 4.06 | 0.91 | 7.99 | 0.669 | 5.91 | 13.39 | 2.76 | 4.02 | 0.362 | 0.449 | 7.48 | 6.00 | 0.75 | 4 | 0.75 | 5.00 | 0.06 | 38 |
| 4" | 3.94 | 5.20 | 0.98 | 9.02 | 0.866 | 7.09 | 16.54 | 4.02 | 4.92 | 0.449 | 0.51 | 9.02 | 7.50 | 0.75 | 8 | 0.94 | 6.18 | 0.06 | 64 |

BREAK-TORQUE VALUE (IN-LB AT 0 PSI) - CLASS 150

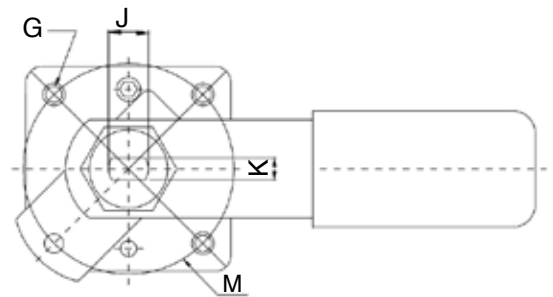
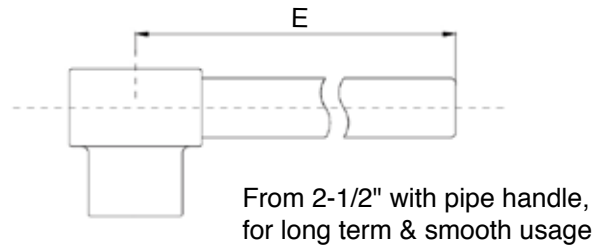
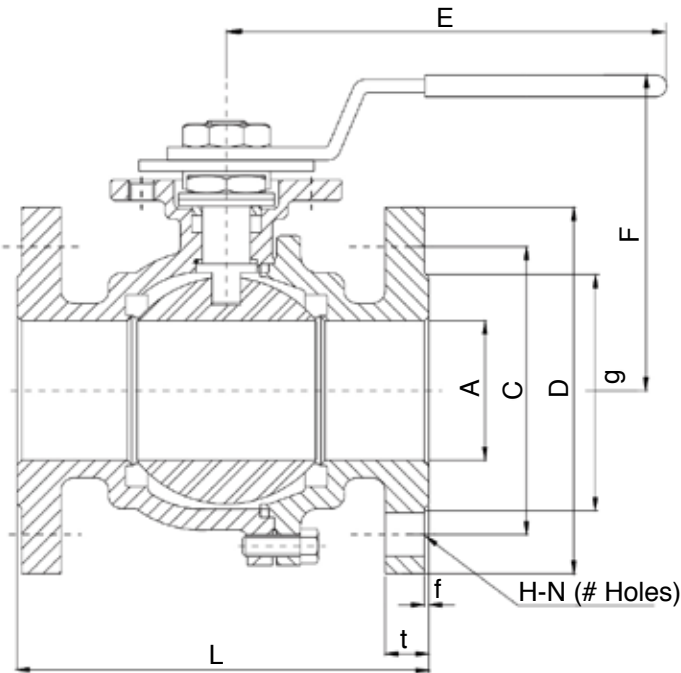
| Size | 1/2" | 3/4" | 1" | 1-1/4" | 1-1/2" | 2" | 2-1/2" | 3" | 4" |
|------------|------|------|-----|--------|--------|-----|--------|------|------|
| Grease | 49 | 64 | 78 | 115 | 177 | 212 | 478 | 549 | 1097 |
| Non-Grease | 64 | 83 | 117 | 161 | 266 | 319 | 841 | 1168 | 2168 |

Note 1: The grease J Flow Control uses include lubricants and anti-seize grease that are both SILICONE-FREE

Note 2: J Flow Controls strongly suggests increasing the torque at least 20% - 40% (depending on seat material) for safety factor when mounting an actuator

OBDM2500 Flanged Valves

DIMENSIONS ANSI 300 (1/2" - 4")



| Size (in) | A | F | E | L | K | M | G | J | Class 300# Flanged Dimensions | | | | | | | | |
|-----------|------|------|-------|-------|------|------|-----|------|-------------------------------|------|------|---|------|------|------|------|------|
| | | | | | | | | | D | C | H | N | t | g | B | O | f |
| 1/2 | 0.59 | 2.99 | 5.71 | 5.50 | 0.26 | 1.65 | M5 | 0.39 | 3.74 | 2.62 | 0.63 | 4 | 0.57 | 1.38 | 0.55 | 0.42 | 0.06 |
| 3/4 | 0.79 | 3.15 | 5.71 | 6.00 | 0.26 | 1.65 | M5 | 0.39 | 4.61 | 3.25 | 0.75 | 4 | 0.63 | 1.69 | 0.56 | 0.43 | 0.06 |
| 1 | 0.98 | 3.46 | 7.68 | 6.50 | 0.38 | 1.97 | M6 | 0.55 | 4.88 | 3.50 | 0.75 | 4 | 0.69 | 2.01 | 0.85 | 0.66 | 0.06 |
| 1-1/4 | - | - | - | - | - | - | - | - | - | - | - | - | - | - | - | - | - |
| 1-1/2 | 1.50 | 4.49 | 7.50 | 7.50 | 0.38 | 2.76 | M8 | 0.71 | 6.14 | 4.51 | 0.87 | 4 | 0.83 | 2.87 | 0.98 | 0.71 | 0.06 |
| 2 | 1.97 | 4.84 | 8.50 | 8.50 | 0.38 | 2.76 | M8 | 0.71 | 6.50 | 5.00 | 0.79 | 8 | 0.89 | 3.62 | 0.94 | 0.77 | 0.06 |
| 2-1/2 | 2.56 | 5.59 | 9.50 | 9.50 | 0.47 | 4.02 | M10 | 0.79 | 7.48 | 5.87 | 0.87 | 8 | 1.00 | 4.13 | 0.90 | 0.64 | 0.06 |
| 3 | 3.15 | 5.98 | 11.13 | 11.13 | 0.47 | 4.02 | M10 | 0.79 | 8.27 | 6.61 | 0.87 | 8 | 1.14 | 5.00 | 0.86 | 0.64 | 0.06 |
| 4" | 3.94 | 7.17 | 12.00 | 12.00 | 0.59 | 4.02 | M10 | 0.94 | 10.00 | 7.87 | 0.87 | 8 | 1.26 | 6.18 | 1.17 | 0.96 | 0.06 |

BREAK-TORQUE VALUE (IN-LB AT 0 PSI) - CLASS 300

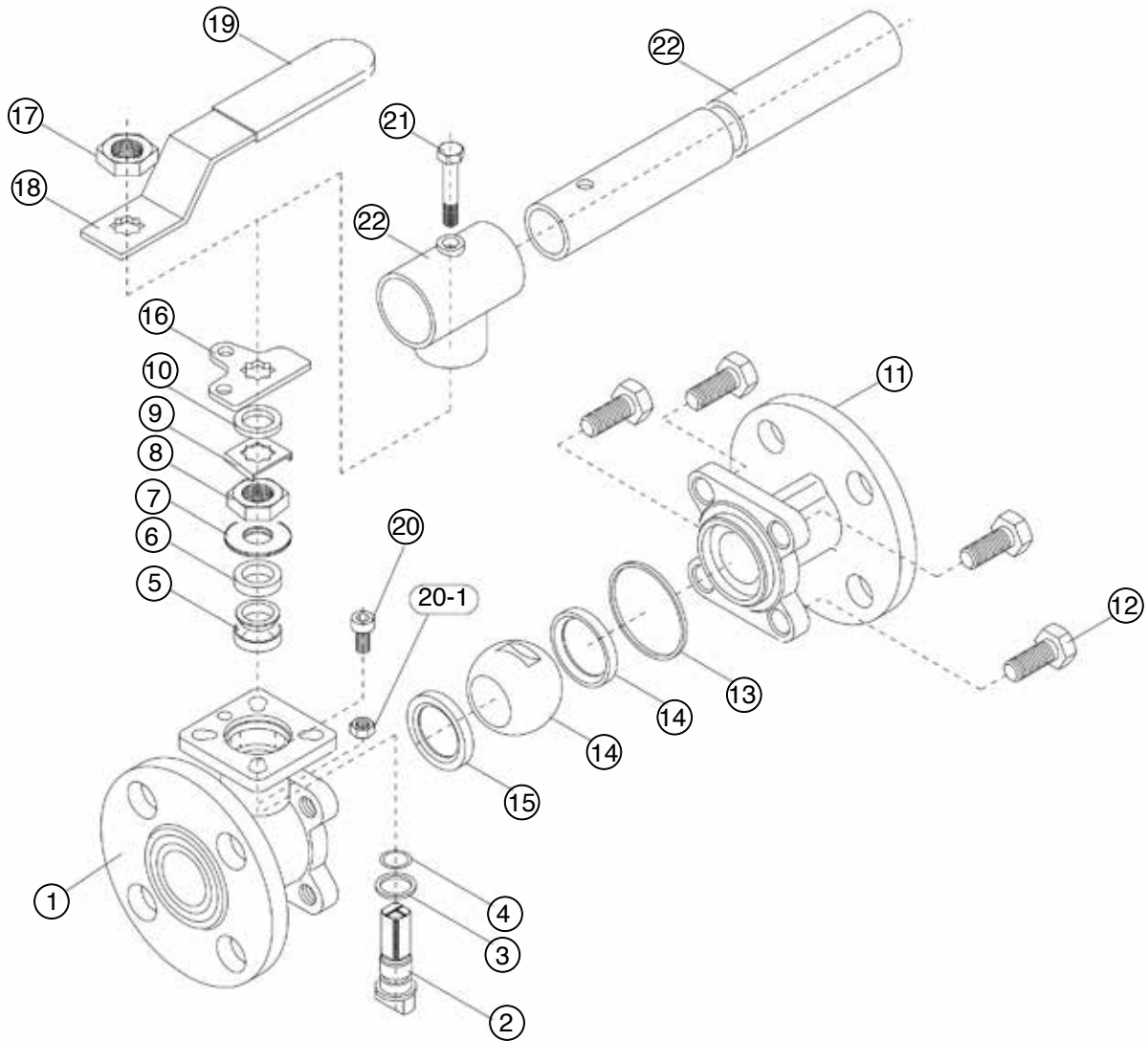
| Size | 1/2" | 3/4" | 1" | 1-1/4" | 1-1/2" | 2" | 2-1/2" | 3" | 4" |
|------------|------|------|-----|--------|--------|-----|--------|------|------|
| Grease | 73 | 87 | 113 | - | 238 | 298 | 631 | 749 | 1385 |
| Non-Grease | 102 | 121 | 170 | - | 238 | 537 | 1262 | 1572 | 2909 |

Note 1: The grease J Flow Control uses include lubricants and anti-seize grease that are both SILICONE-FREE

Note 2: J Flow Controls strongly suggests increasing the torque at least 20% - 40% (depending on seat material) for safety factor when mounting an actuator

OBDM2500 Flanged Valves

PARTS IDENTIFICATION (1/2" - 4")



| Part No. | Name | Stainless Steel | Carbon Steel | Part No. | Name | Stainless Steel | Carbon Steel |
|----------|---------------|-----------------|--------------|----------|---------------|-----------------|--------------|
| 1 | Body | CF8M | A216 WCB | 13 | Gasket | TFM | TFM |
| 2 | Stem | 316SST | 304SST | 14 | Ball | 316SST | 304SST |
| 3 | Thrust Washer | TFM | TFM | 15 | Ball Seat | TFM | TFM |
| 4 | O-ring | Viton | Viton | 16 | Stopper Plate | 304SST | 304SST |
| 5 | Stem Bearing | TFM | TFM | 17 | Handle Nut | 304SST | 304SST |
| 6 | Gland | 304SST | 304SST | 18 | Handle | 304SST | 304SST |
| 7 | Stem Washer | 301SST | 301SST | 19 | Sleeve | Vinyl | Vinyl |
| 8 | Stem Nut | 304SST | 304SST | 20 | Stop Pin | 304SST | 304SST |
| 9 | Nut Stop | 304SST | 304SST | 21 | Set Bolt | 304SST | 304SST |
| 10 | Washer | 304SST | 304SST | 22 | Lever Head | CF8 | CF8 |
| 11 | Flanged End | CF8M | A216 WCB | 23 | Pipe Handle | Steel Pipe | Steel Pipe |
| 12 | Bolt | 304SST | 304SST | | | | |



FEATURES & BENEFITS (5" - 12")

- Body & end caps sand casting
- Available in Stainless & Carbon Steel
- ISO 5211 mounting pad
- Adjustable stem packing
- Blow-out proof stem design
- 100% air tested under water at 80 - 100 psi
- Working pressure of Class 150 / 300
- Temperature range: -320°F to 800°F

FLOW COEFFICIENT

| Size | Cv Factor |
|------|-----------|
| 5" | 3350 |
| 6" | 5000 |
| 8" | 10000 |
| 10" | 15000 |
| 12" | 21000 |

BREAK-TORQUE VALUE (IN-LB AT 0 PSI)

| Size | 5" | 6" | 8" | 10" | 12" |
|------------|------|------|------|------|-------|
| Grease | 2036 | 2213 | 4868 | 5753 | 10620 |
| Non-Grease | - | - | - | - | - |

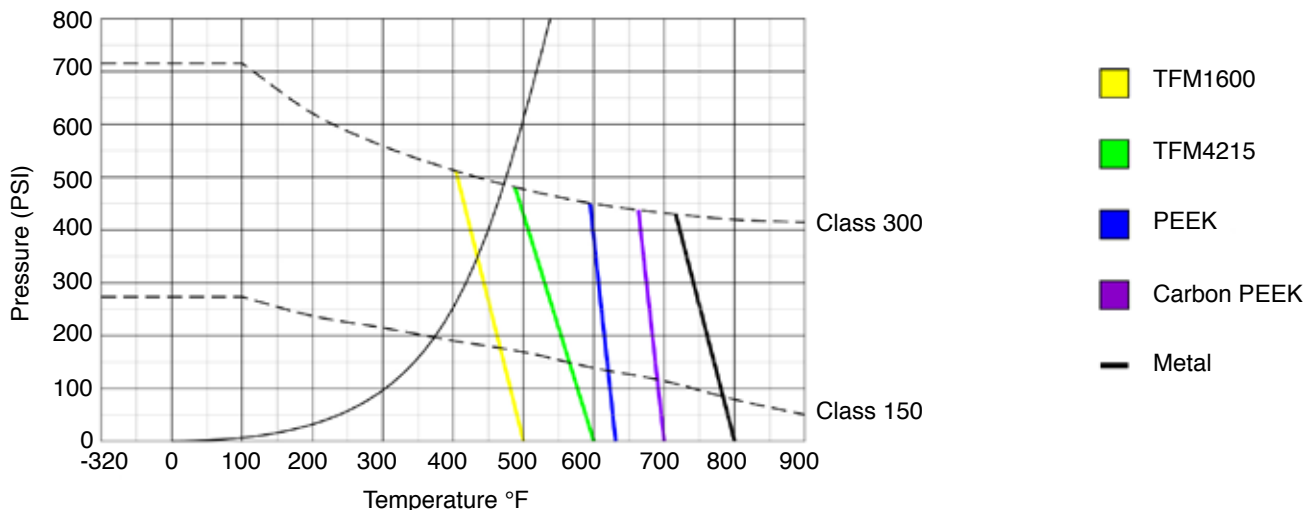
Note 1: The grease J Flow Control uses include lubricants and anti-seize grease that are both SILICONE-FREE

Note 2: J Flow Controls strongly suggests increasing the torque at least 20% - 40% (depending on seat material) for safety factor when mounting an actuator

Options (5" - 12")

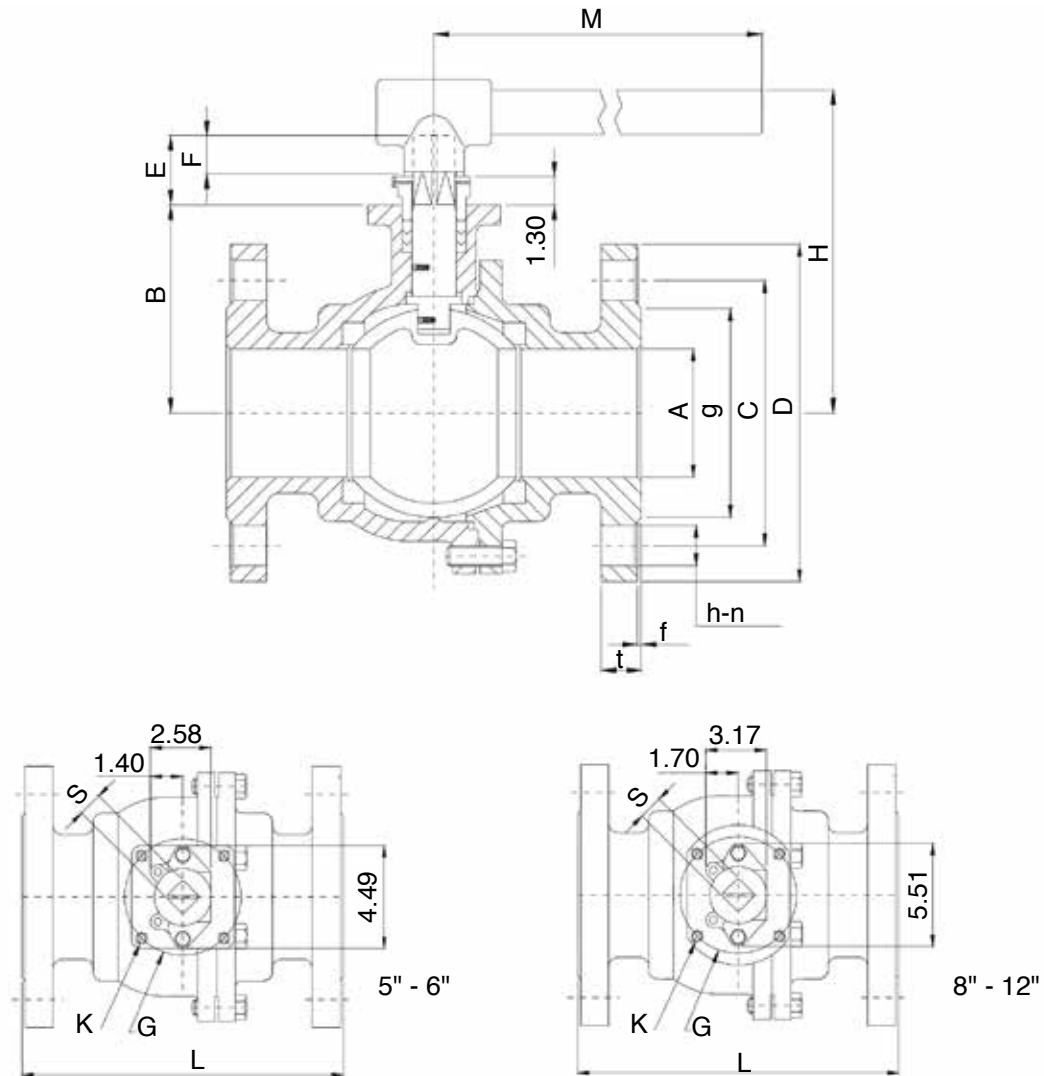
- Fire safe design
- Gear operator / pneumatic and electric actuator
- PTFE cavity filler
- PTFE coating (40 - 70 um)
- Direct mount bracket
- Alloy 20 / Monel / Titanium / Hastelloy C / Super Duplex
- V-ball for control valve in 30°, 60°, 90°, and custom
- Cryogenic valves
- Fugitive emissions bonnet
- Metal seated

PRESSURE / TEMPERATURE CHART



OB2500 Flanged Valves

DIMENSIONS



DIMENSIONS ANSI 150 5" - 12"

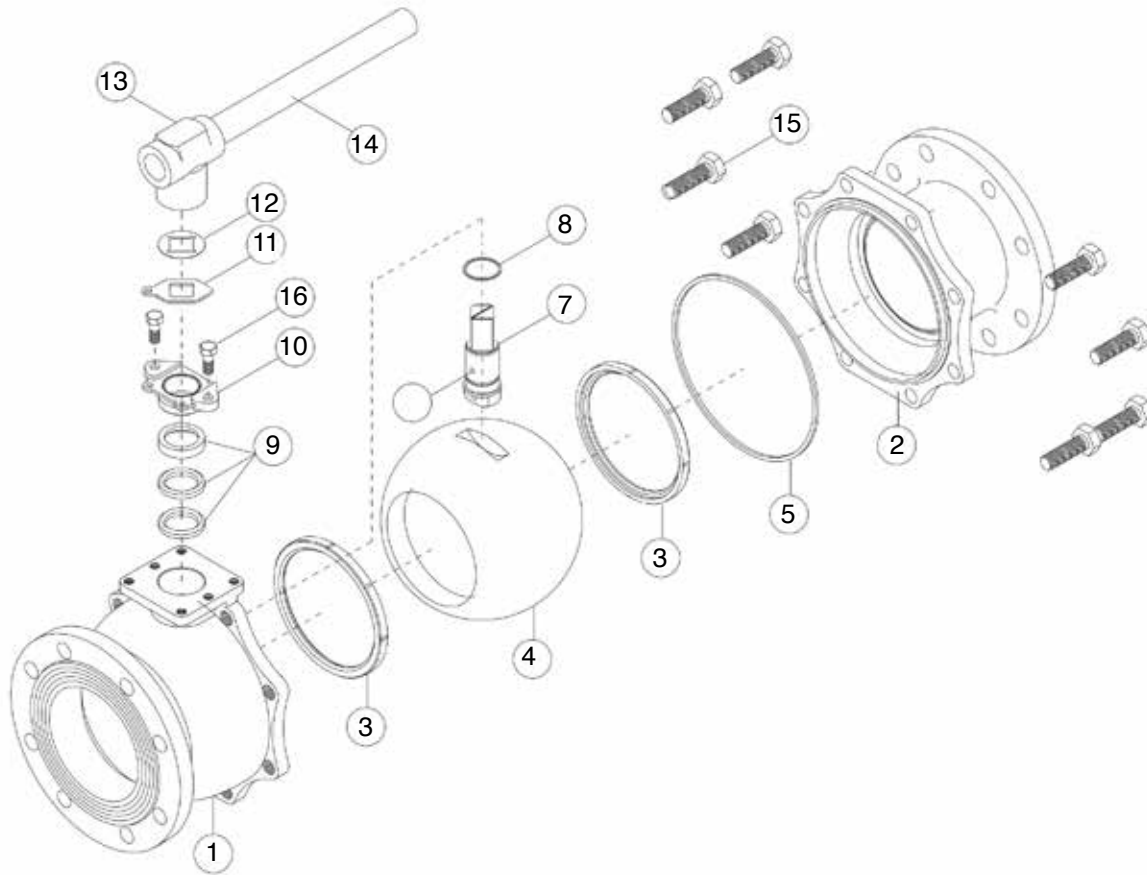
| Size (in) | A | B | E | F | G | H | M | L | K | S | Class 150# Flanged Dimensions | | | | | | |
|-----------|-------|-------|------|------|------|-------|-------|-------|-----|------|-------------------------------|-------|----|------|-------|------|------|
| | | | | | | | | | | | D | C | n | h | g | t | f |
| 5 | 4.92 | 5.91 | 2.28 | 1.34 | 4.92 | 10.43 | 27.56 | 14.02 | M12 | 1.06 | 10.00 | 8.50 | 8 | 0.87 | 7.32 | 0.94 | 0.06 |
| 6 | 5.91 | 6.69 | 2.28 | 1.34 | 4.92 | 11.22 | 33.46 | 15.51 | M12 | 1.06 | 10.98 | 9.51 | 8 | 0.87 | 8.50 | 1.00 | 0.06 |
| 8 | 7.87 | 8.62 | 2.52 | 1.50 | 4.92 | 13.94 | 43.31 | 17.99 | M12 | 1.42 | 13.50 | 11.75 | 8 | 0.87 | 10.63 | 1.13 | 0.06 |
| 10 | 9.84 | 10.04 | 2.52 | 1.50 | 4.92 | 15.35 | 47.24 | 20.98 | M12 | 1.42 | 15.98 | 14.25 | 12 | 0.98 | 12.76 | 1.19 | 0.06 |
| 12 | 11.81 | 12.09 | 3.11 | 1.81 | 5.51 | 17.40 | 59.06 | 24.02 | M16 | 1.42 | 19.02 | 17.01 | 12 | 0.98 | 15.00 | 1.25 | 0.06 |

DIMENSIONS ANSI 300 6" - 8"

| Size (in) | A | B | E | F | G | H | M | L | K | S | Class 300# Flanged Dimensions | | | | | | |
|-----------|------|------|------|------|------|-------|-------|-------|-----|------|-------------------------------|-------|----|------|-------|------|------|
| | | | | | | | | | | | D | C | n | h | g | t | f |
| 6 | 5.91 | 6.87 | 2.11 | 1.24 | 4.92 | 11.34 | 33.46 | 15.87 | M12 | 1.06 | 12.52 | 10.63 | 12 | 0.87 | 8.50 | 1.46 | 0.06 |
| 8 | 7.87 | 8.64 | 2.52 | 1.50 | 4.92 | 13.50 | 43.31 | 19.76 | M12 | 1.42 | 15.00 | 13.00 | 12 | 1.02 | 10.63 | 1.63 | 0.06 |

OB2500 Flanged Valves

PARTS IDENTIFICATION (5" - 12")



| Part. No. | Name | Material |
|-----------|---------------|------------|
| 1 | Body | CF8M / WCB |
| 2 | Flanged End | CF8M / WCB |
| 3 | Ball Seat | TFM 1600 |
| 4 | Ball | SS316 |
| 5 | Gasket | TFM 1600 |
| 6 | Anti-Static | SS316 |
| 7 | Stem | SS316 |
| 8 | Thrust Washer | TFM1600 |
| 9 | Stem Packing | TFM1600 |
| 10 | Gland | SS304 |
| 11 | Stopper | SS304 |
| 12 | Stopper Plate | SS304 |
| 13 | Lever Head | CF8 |
| 14 | Pipe Handle | Steel Pipe |
| 15 | Bolt | SS304 |
| 16 | Gland Bolt | SS304 |

OB2500 Flanged Valves

HOW TO ORDER

| Sizes | | Series | Firesafe | Body ¹ , Ball & Stem | | Port | | Body Seal | |
|----------|--------|-----------|----------|---------------------------------|-----------------------|----------|--------------|-----------|----------|
| 3 | 1/2" | 25 | F | 00 | CF8 | F | Full Port | T | TFM 1600 |
| 4 | 3/4" | | | 0L | CF3 | R | Reduced Port | C | TFM4215 |
| 5 | 1" | | | 23 | WCB, CF8M Ball & Stem | 1 | 15° V-Ball | G | Graphite |
| 0 | 1-1/4" | | | 33 | CF8M | 3 | 30° V-Ball | | |
| 6 | 1-1/2" | | | 44 | Alloy 20 | 6 | 60° V-Ball | | |
| 7 | 2" | | | 55 | Monel | 9 | 90° V-Ball | | |
| 8 | 2-1/2" | | | 6L | CF3M | | | | |
| 9 | 3" | | | 77 | Hastelloy C | | | | |
| A | 4" | | | 88 | LCB | | | | |
| C | 6" | | | 83 | LCB, CF8M Ball & Stem | | | | |
| E | 8" | | | 99 | Duplex | | | | |
| F | 10" | | | | | | | | |
| G | 12" | | | | | | | | |

| Packing | | Seat | | End Connection | | Options | |
|----------|----------|----------|-------------|----------------|--------------------|-----------|---------------------|
| T | TFM 1600 | U | UHMWPE | F1 | ANSI 150 RF Flange | CF | Cavity-Filled Seats |
| C | TFM4215 | T | TFM 1600 | F3 | ANSI 300 RF Flange | LD | Locking Handle |
| G | Graphite | G | TFM4215 | FF | Flat Faced | SH | Spring Handle |
| | | P | PEEK | | | GO | Gear Operator |
| | | 6 | Carbon PEEK | | | BS | Bare Stem |
| | | M | CF8M | | | FE | Fugitive Emission |
| | | I | Inconel 750 | | | SJ | Steam Jacket |
| | | | | | | VB | Vented Ball |

¹ Please see the J Flow Controls Configurator for a full list of design material and accessory options

J Flow Controls®
 4665 Interstate Drive
 Cincinnati, OH 45246
 513-731-2900
jflowcontrols.com

While the information and specifications contained in this literature are believed to be accurate, they are supplied for informative purposes only and should not be considered certified or a guarantee of satisfactory results. Nothing contained herein is to be construed as a warranty or guarantee, express or implied, regarding any matter with respect to this product. Because J Flow Controls® is continually improving and upgrading its product design, the specifications, dimensions and information contained herein are subject to change without notice.