

### DESCRIPTION

- Direct Mount
- 3 / 4 Way High Pressure Ball Valve
- Full Port
- 1/4" - 2"
- CLASS 600 / CLASS 900 / 3000 PSI (WOG) / CLASS 1500

# DMHP3(4)L(T)2A00 Series

### CERTIFICATIONS

- Valve Design: ASME B16.34
- Material Certification: EN10204-3.1 MTR
- Quality Assurance: ISO 9001:2008
- Steel Casting: MSS SP-55
- Valve Marking: MSS SP-25
- Valve Test: API 598
- Direct Mount: ISO 5211
- Stem Connection: DIN 3337
- Anti-Static: API 608
- Sulfide Stress Cracking: NACE MR-01-75
- End Connections: ASME B16.11, ASME B1.20.1, ASME B16.5, ASME B16.25

### OPTIONS

- Automation Applicable
- PTFE / PFA Coating (40-70 um)
- TFM1600 / TFM4215 / DELRIN / PEEK / Carbon PEEK
- Cavity Filler
- 180 Degree Operation Stop Plate
- Hastalloy C / Alloy 20 / Super Duplex / Monel
- Fire Safe Design
- Spring Return (Dead Man) Handle
- Stem Extensions
- Fugitive Emissions Bonnet

### FEATURES AND BENEFITS

- Body and End Caps Quality Investment Casting
- Construction Design to ASME B16.34 Standard
- Available in Stainless Steel and Carbon Steel
- ISO 5211 Direct Mounting Pad
- Adjustable Stem Packing
- Blow-Out Proof Stem Design
- Available in L / T / X / I - Port
- Trunnion and Full Bore Design
- Available in 3 / 4 - Way in Block Body Type
- 100% Air Tested Under Water at 80-100 PSI
- Temperature Range -20°F to +450°F
- End Type: Butt Weld / Flanged / Socket Weld / Threaded
- Locking Function
- Working Pressure:
  - TFM1600 / TFM4215 - Class 600
  - DELRIN / PEEK - Class 900 / 1500
- For Class 1500:
  - 1/2" - 1-1/4" (3600 psi)
  - 1-1/2" - 2" (3000 psi)

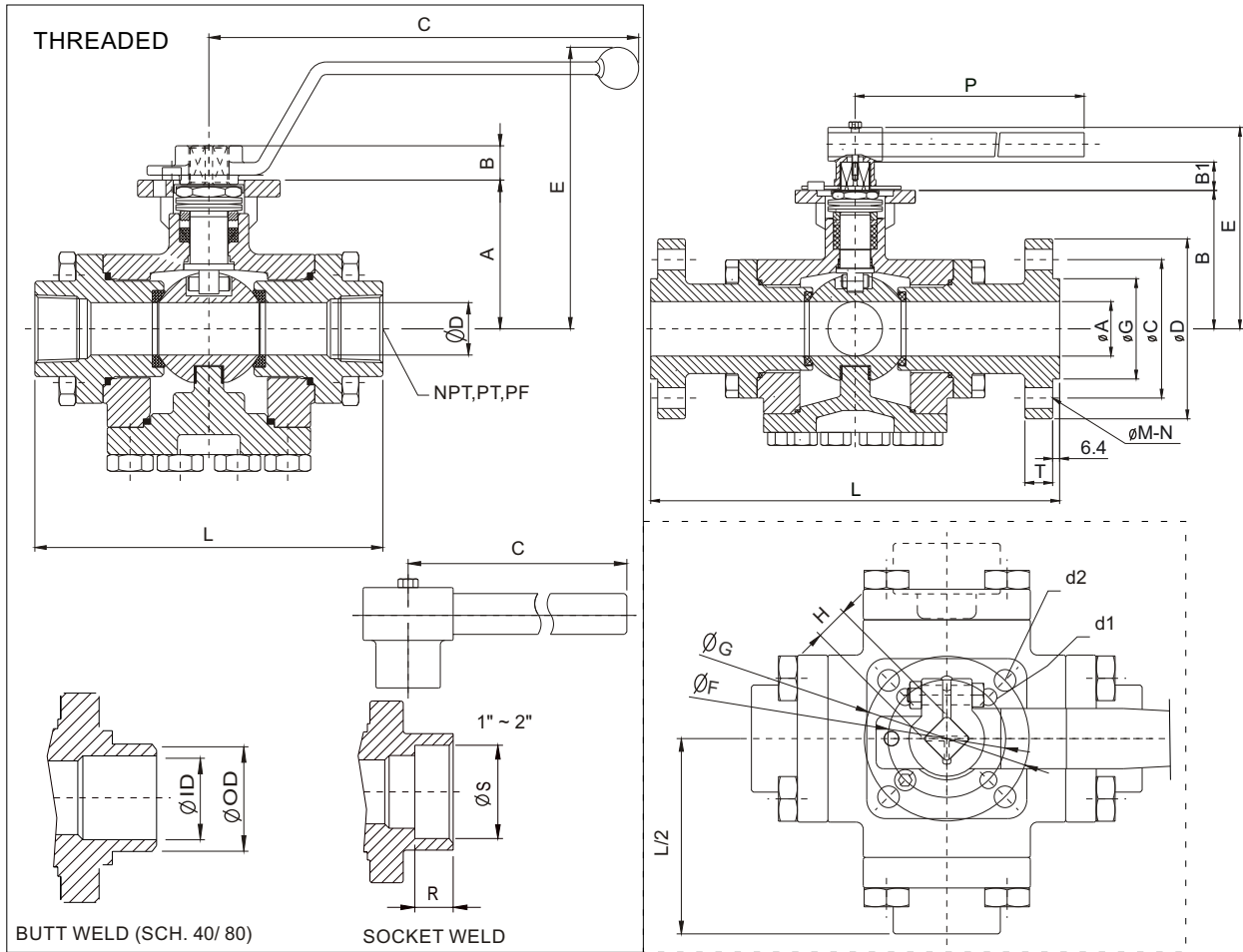
### BREAK-TORQUE VALUE (in-lb at 0 psi)

SIZE	1/4"	3/8"	1/2"	3/4"	1"	1-1/4"	1-1/2"	2"
<b>GREASE</b>	243.40	243.40	243.40	403.59	486.79	-	778.87	1168.3
<b>NON-GREASE</b>	311.55	311.55	311.55	550.52	681.51	-	1070.9	1655.1
<b>AT 3000 PSI</b>	389.43	389.43	389.43	679.74	827.54	-	1752.4	3018.1

Note 1: The greases J Flow Controls uses include lubricants and anti-seize grease that are both SILICONE-FREE.

Note 2: J Flow Controls strongly suggests increasing the torque at least 30%-40% for safety factor when mounting an actuator.

# DMHP3(4)L(T)2A00 Series Valves



## DIMENSIONS THREADED (in)

FULL PORT	A	B	C	D	E	F	G	d1	d2	H	L	SW		BW (40#)		BW (80#)	
												S	R	OD	ID	OD	ID
1/4"	1.73	0.39	5.12	0.43	3.86	1.42	1.97	0.24	0.28	0.35	4.09	0.56	0.44	0.54	0.39	0.54	0.30
3/8"	1.73	0.39	5.12	0.47	3.86	1.42	1.97	0.24	0.28	0.35	4.09	0.69	0.44	0.67	0.47	0.67	0.42
1/2"	2.05	0.47	6.30	0.59	4.41	-	1.97	-	0.28	0.43	4.72	0.85	0.50	0.84	0.62	0.84	0.55
3/4"	2.48	0.47	6.30	0.79	4.84	-	1.97	-	0.28	0.43	5.98	1.07	0.56	1.05	0.82	1.05	0.74
1"	2.87	0.59	8.07	0.98	5.31	1.97	2.76	0.28	0.36	0.55	6.54	1.33	0.63	1.31	1.05	1.31	0.95
1-1/2"	3.62	0.71	9.84	1.50	5.31	2.76	4.02	0.36	0.45	0.67	8.54	1.91	0.75	1.90	1.61	1.90	1.50
2"	5.00	1.02	12.20	1.97	7.20	4.02	4.92	0.45	0.53	0.87	10.47	2.41	0.87	2.37	2.07	2.37	1.94

## DIMENSIONS FLANGED (in)

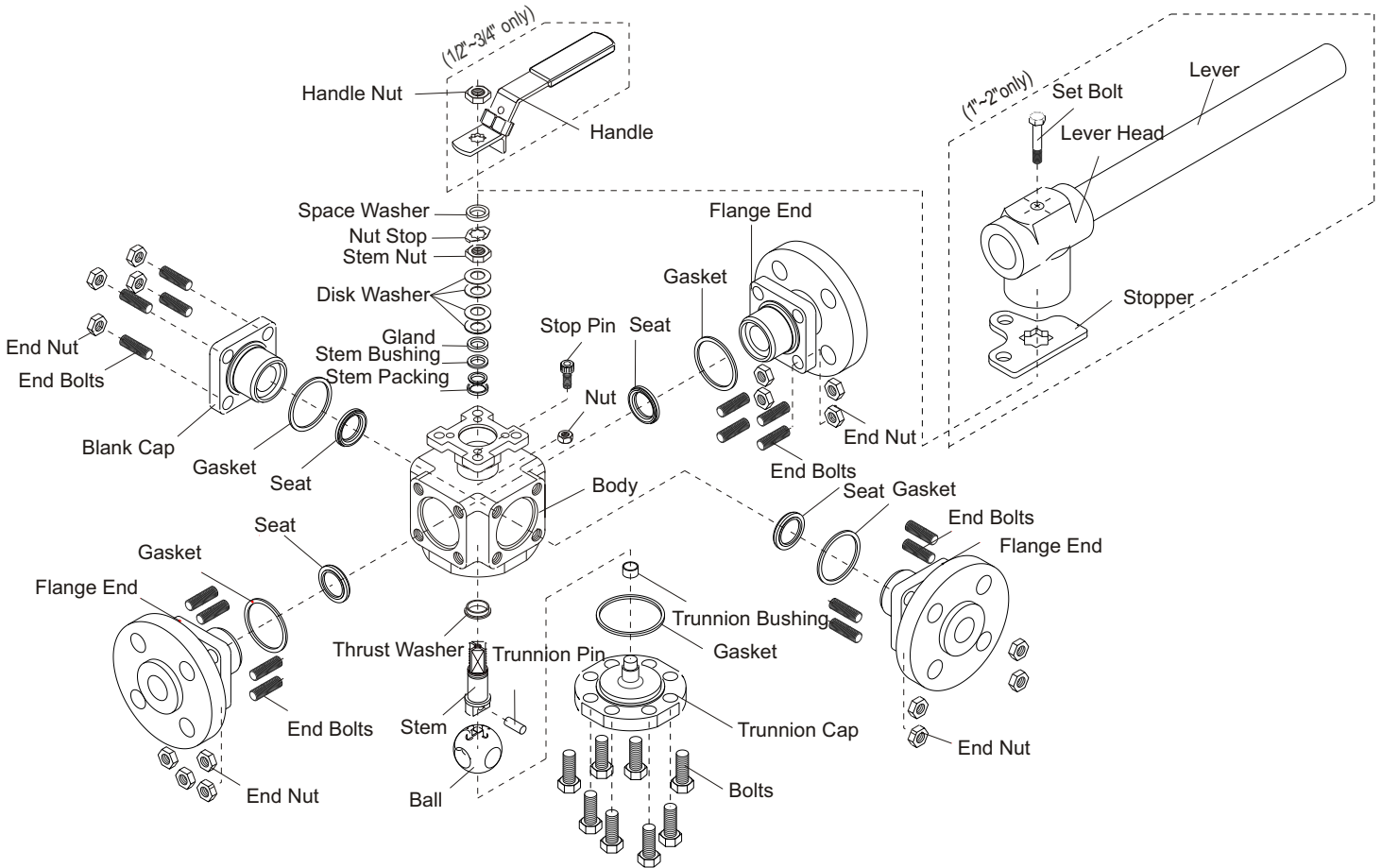
SIZE	A	B	B1	E	F	G	d1	d2	H	P
1/2"	0.59	2.05	0.43	4.41	-	1.97	-	0.28	0.43	6.30
3/4"	0.79	2.48	0.43	4.84	-	1.97	-	0.28	0.43	6.30
1"	0.98	2.87	0.55	4.96	1.97	2.76	0.28	0.36	0.55	12.20
1-1/2"	1.50	3.62	0.67	5.71	2.76	4.02	0.36	0.45	0.67	12.20
2"	1.97	5.00	1.02	7.48	4.02	4.92	0.45	0.53	0.87	12.20

SIZE	CLASS 600						
	C	D	G	T	M	N	L
1/2"	2.62	3.75	1.38	0.56	0.63	4	8.27
3/4"	3.25	4.62	1.69	0.62	0.75	4	9.76
1"	3.50	4.88	2.01	0.69	0.75	4	10.75
1-1/2"	4.50	6.12	2.87	0.88	0.87	4	13.50
2"	5.00	6.50	3.62	1.00	0.75	8	14.76

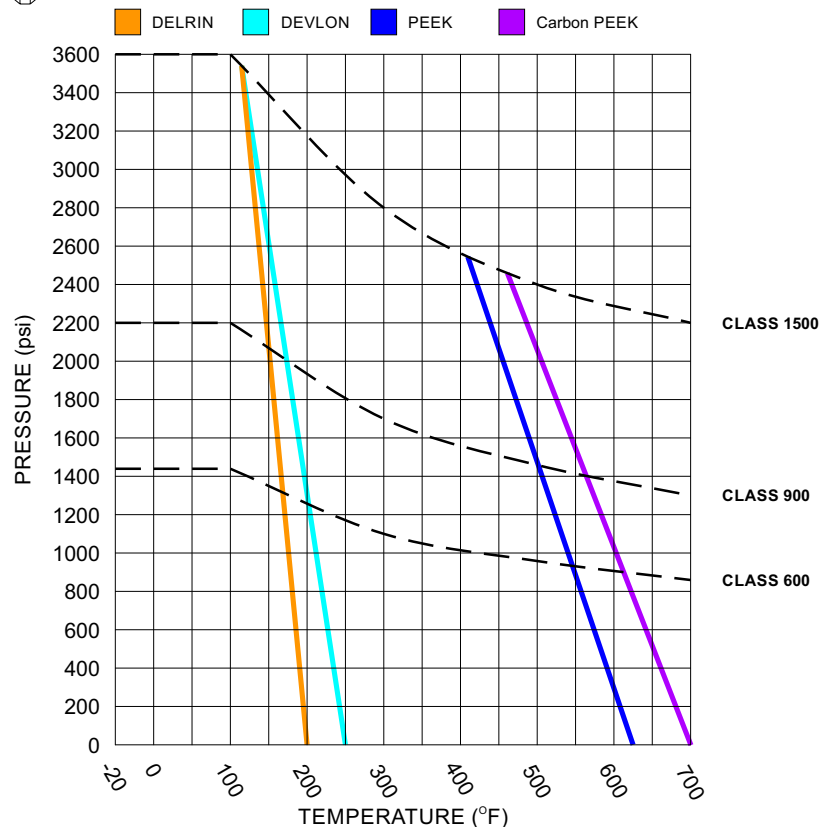
SIZE	CLASS 900 / 1500						
	C	D	G	T	M	N	L
1/2"	3.25	4.75	1.38	0.88	0.87	4	8.50
3/4"	3.50	5.12	1.69	1.00	0.87	4	10.04
1"	4.00	5.89	2.01	1.12	1.00	4	11.06
1-1/2"	4.88	7.00	2.87	1.25	1.12	4	13.98
2"	6.50	8.50	3.62	1.50	1.00	8	15.55

# DMHP3(4)L(T)2A00 Series Valves

## PARTS IDENTIFICATION 1/4" - 2"



PART NAME	THREADED	FLANGED
BODY	CF8M / WCB	CF8M / WCB
END CAP	CF8M / WCB	CF8M / WCB
SEAT	DELRIN / PEEK	TFM / DELRIN / PEEK
BALL	SS 316	SS 316
GASKET	TFM / GRAPHITE	TFM / GRAPHITE
BOLTS	SS 304	SS 304
TRUNNION PIN	SS 316	SS 316
STEM	SS 316	SS 316
THRUST WASHER	PEEK	PEEK
STEM PACKING	TFM / GRAPHITE	TFM / GRAPHITE
STEM BUSHING	DELRIN / PEEK	DELRIN / PEEK
GLAND	SS 304	SS 304
DISK WASHER	SS 301	SS 301
STEM NUT	SS 304	SS 304
NUT STOP	SS 304	SS 304
HANDLE BOLTS	SS 304	SS 304
HANDLE NUT	SS 304	SS 304
HANDLE	CF8	CF9
TRUNNION BUSHING	DELRIN / PEEK	DELRIN / PEEK
TRUNNION CAP	CF8M / WCB	CF8M / WCB
GASKET	TFM / GRAPHITE	TFM / GRAPHITE
TRUNNION BOLT	SS 304	SS 304
BLANK CAP	CF8M / WCB	CF8M / WCB
STOP PIN	SS 304	SS 304
LEVER HEAD	CF8	SS 304
SET BOLT	SS 304	SS 304
LEVER	CARBON STEEL	SS 304 / CS



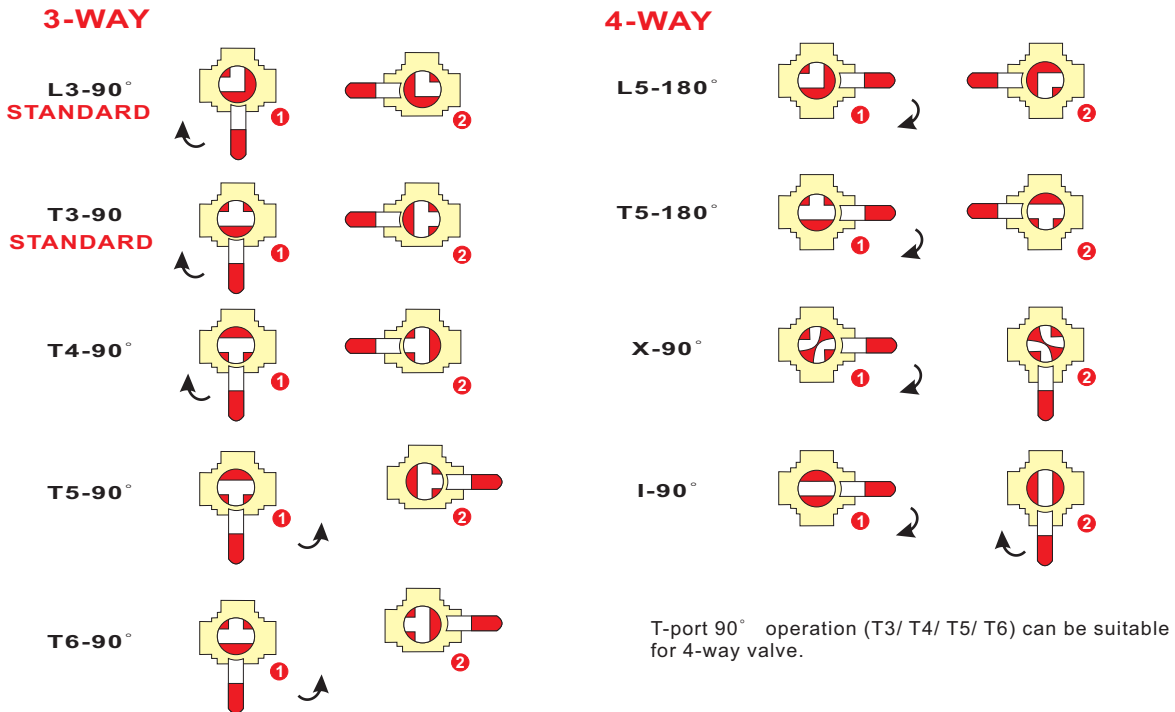
# DMHP3(4)L(T)2A00 Series Valves

## HOW TO ORDER

Example: DMHP3L2A33FGRPKF6-050

VALVE SIZE		PRODUCT SERIES	BODY MATERIAL		BALL/STEM MATERIAL		PORT		
050	1/2"	125	1-1/4"	DMHP3L2A	2	WCB	3	CF8M	FP Full Port
075	3/4"	150	1-1/2"	DMHP3T2A	3	CF8M	4	ALLOY 20	
100	1"	200	2"	DMHP4LL2A	4	ALLOY 20	5	MONEL	
					5	MONEL	7	HASTELLOY C276	
					7	HASTELLOY C276	9	DUPLEX 2507	
					9	DUPLEX 2507			

PACKING / BODY SEAL MATERIAL		SEAT MATERIAL	END CONNECTIONS		MATERIAL OPTIONS		DESIGN OPTIONS		
TM	TFM1600	DE	DELIN	F60	ANSI 600 RF Flange	NA	Standard	NA	Standard
GG	Graphite	DV	DEVLON	F90	ANSI 900 RF Flange	BC	TFM4215 Body Seal	L2	3-Way Port L2 - 90°
		PK	PEEK	F1X	ANSI 1500 RF Flange	BG	Graphite Body	L3	3-Way Port L3 - 90°
		PC	Carbon PEEK	SCW	Socket Weld			T3	3-Way Port T3 - 90°
				FPT	Female NPT			T4	3-Way Port T4 - 90°
				W10	Butt Weld sch 10			T5	3-Way Port T5 - 90°
				W40	Butt Weld sch 40			T6	3-Way Port T6 - 90°
				W80	Butt Weld sch 80				



While the information and specifications contained in this literature are believed to be accurate, they are supplied for informative purposes only and should not be considered certified or a guarantee of satisfactory results. Nothing contained herein is to be construed as a warranty or guarantee, express or implied, regarding any matter with respect to this product. Because J Flow Controls is continually improving and upgrading its product design, the specifications, dimensions and information contained herein are subject to change without notice.