



STANDARDS

- ISO 5211 direct mount wafer design
- Standard ISA 75.04 face-to-face; optional ANSI B16.20 short pattern
- Patent Number US8,398,055B2

DM9900-W Series

Wafer Segmented & Anti-Cavitation V Port Control Valve

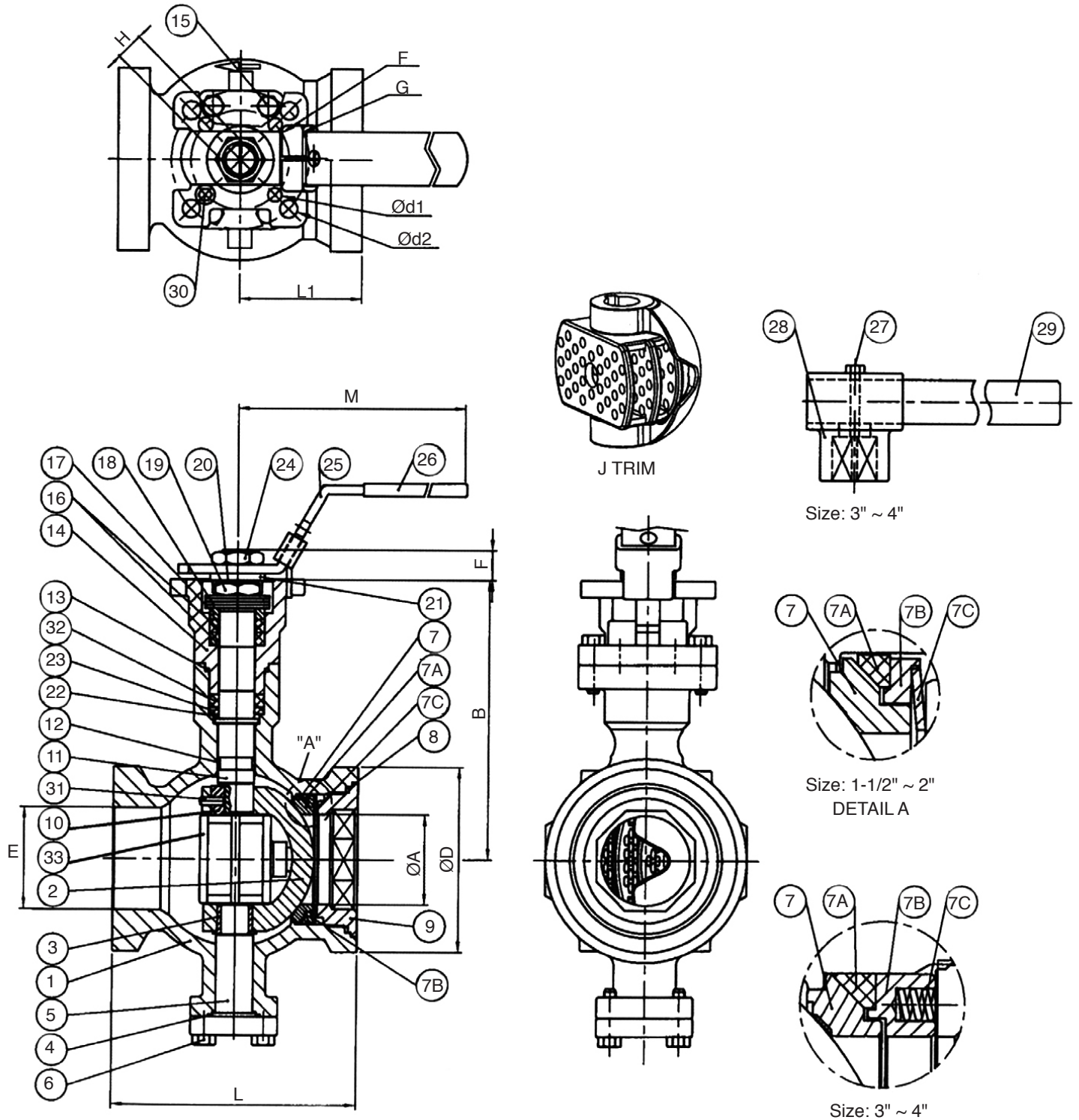
FEATURES & BENEFITS

- Size range: 1-1/2" - 6"
- ANSI Class 600
- Flanged and flangeless versions available
- Live-loaded packing
- Protected bearings, top & bottom
- Easy installation and versatility
- Extremely low actuator torque
- J trim for cavitation/noise abatement
- WCB, 316SS, 317SS and other alloy materials available
- Metal seated

APPLICATIONS & INDUSTRIES

- Throttling
- On-off applications
- Pulp and paper
- Chemical
- Power
- Oil & Gas
- Mining

BILL OF MATERIALS & DIMENSIONS



DM9900-W Series Wafer Segmented & Anti-Cavitation V Port Control Valve

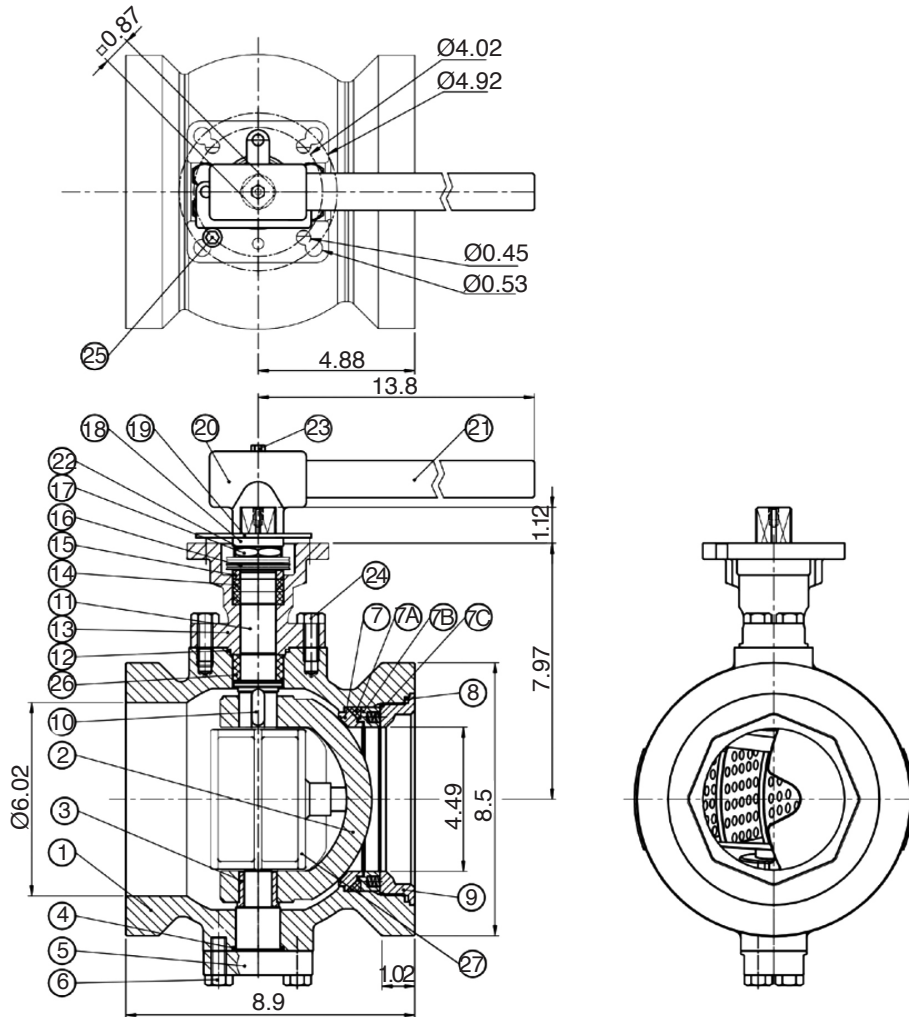
BILL OF MATERIALS & DIMENSIONS

No	Description	Materials Option		No	Description	Material
1	Body	A351 Gr. CF8M	A216 Gr. WCB	16	Stem Packing	Graphite
2	Ball Segment	CF8M + Hardchrome	--	17	Gland	SS 304
3	Bearing	PEEK	--	18	Belleville Washer	17-7PH
4	Gasket	Graphite	--	19	Stem Nut	SS 304
5	Bottom Cap	A351 Gr. CF8M	A216 Gr. WCB	20	Nut Stop	SS 304
6	Bottom Cap Bolts	SS 304	--	21	Space Washer	SS 316
7	Metal Seat	SS316 + Stellite	--	22	Thrust Washer	PEEK
7A	Seat Back Seal	Graphite	--	23	Thrust Back	SS 316
7B	Seat Housing	SS 316	--	24	Handle Nut	SS 304
7C	Spring Disc (1-1/2"~2")	Inconel	--	25	Lock Handle	SS 304
	Seat Spring (3"~4")	Inconel	--	26	Handle Cover	Plastisol
8	Insert Gasket	Graphite	--	27	Set Bolt	SS 304
9	Insert Cap	A351 Gr. CF8M	A216 Gr. WCB	28	Lever Head	A351 CF8
10	Key	SS 316	--	29	Lever	Steel Pipe
11	Stem	SS 630 (17-4PH)	--	30	Stop Pin	SS 304
12	Bearing	PEEK	--	31	Fixed Pin	SS 316
13	Bonnet Gasket	Graphite	--	32	Thrust Washer	PEEK
14	Bonnet	A351 Gr. CF8M	A216 Gr. WCB	33	Noise Reduction Plate	A351 Gr. CF8M
15	Bonnet Bolts	SS 304	--			

Size (in)	A	B	D	E	M	L (ISA)	L1	H	D1	F	G	d2
1-1/2"	1.34	4.77	2.88	0.55	8.07	4.50	2.24	0.55	1.50	1.97	2.76	0.366
2"	1.77	5.52	3.62	0.55	8.07	4.88	2.44	0.55	2.00	1.97	2.76	0.366
3"	2.60	6.65	5.00	0.63	12.20	6.50	3.43	0.67	3.29	2.76	4.02	0.449
4"	3.16	7.20	6.19	0.83	12.20	7.62	4.05	0.67	3.88	2.76	4.02	0.449

DM9900-W Series Wafer Segmented & Anti-Cavitation V Port Control Valve

PARTS IDENTIFICATION



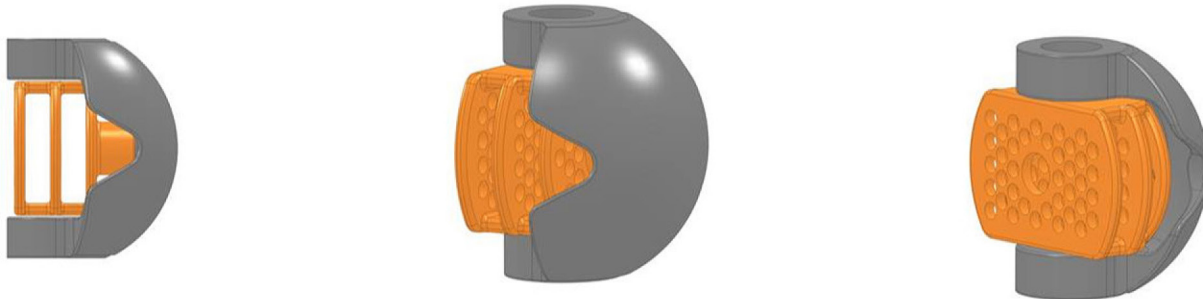
No	Description	Materials Option	
1	Body	A351 Gr. CF8M	A216 Gr. WCB
2	Ball Segment	CF8M + Hardchrome	--
3	Bearing	PEEK	--
4	Gasket	Graphite	--
5	Bottom Cap	A351 Gr. CF8M	A216 Gr. WCB
6	Bottom Cap Bolts	SS 304	--
7	Metal Seat	SS316 + Stellite	--
7A	Back Seal	Graphite	--
7B	Housing	SS 316	--
7C	Compression Spring	Inconel	--
8	Insert Gasket	Graphite	--
9	Insert Cap	A351 Gr. CF8M	A216 Gr. WCB
10	Key	SS 316	--
11	Stem	SS 630 (17-4PH)	--
12	Bonnet Gasket	Graphite	--

No	Description	Material	Option
13	Bonnet	A351 Gr. CF8M	A216 Gr. WCB
14	Stem Packing	Graphite	--
15	Gland	SS 304	--
16	Belleville Washer	17-7PH	--
17	Stem Nut	SS 304	--
18	Gland Space	SS 304	--
19	Stop Plate	SS 304	--
20	Handle Head	A351 Gr. CF8M	--
21	Handle Tube	Carbon Steel	--
22	Nut Stop	SS 304	--
23	Set Bolt	SS 304	--
24	Bonnet Bolts	SS 304	--
25	Stop Pin	SS 304	--
26	Thrust Washer	PEEK	--
27	Noise Reduction Plate	A351 Gr. CF8M	--

DESCRIPTION OF J-TRIM OPTION

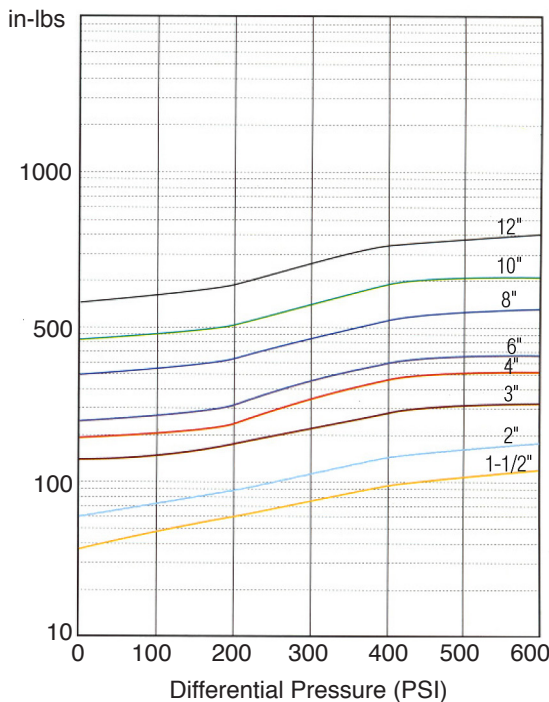
The J Trim option can help with liquid cavitation and aerodynamic noise problems. The pressure drop is divided into a series of small pressure drops and separates the flow steam into many small jet steams. This provides a combination of cavitation/noise abatement with high capacity, high rangeability and the capability to handle impure fluids.

J TRIM OPTION



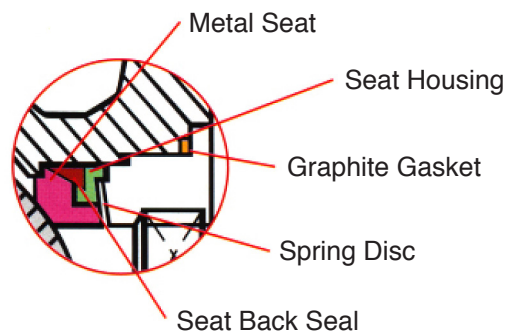
Now available with J Trim option. The valve's application can now range from very low-flow and high accuracy service. This is ideal for additive and coloring lines and pilot plants. Cavitation and aerodynamic noise is also reduced. The J Trim is a self-cleaning design which handles contaminated flows without plugging.

ACTUATOR SIZING TORQUE



Torque is based on clean, clear liquid

METAL-TO-METAL CONTACT SEATS



Suitable for erosive services, fibers, chemical fluids with suspended solids, and high temperature applications.

Metal seat with hardened stellite contact surface and 316 stainless steel segmented ball with tungsten carbide coating ANSI Class VI shutoff

The segmented V-Port ball valve can be used in modulating control services or "on-off" services

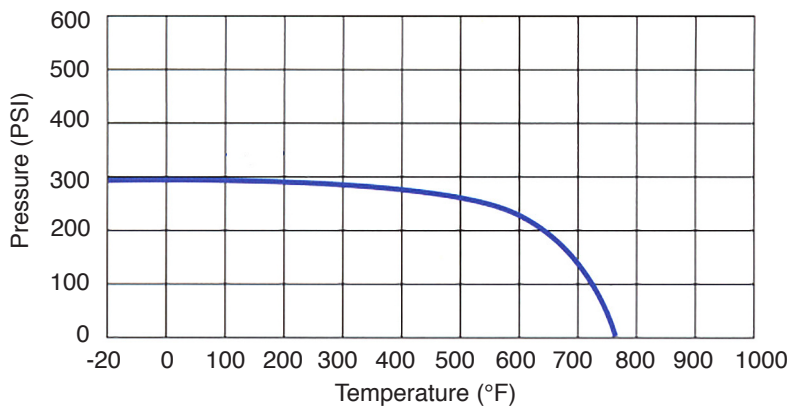
DM9900-W Series Wafer Segmented & Anti-Cavitation V Port Control Valve

SPECIFICATIONS

Nominal Diameter		DM9900 Series Flanged	9900 Series Water		CV Max
inches	mm	Class 150	Class 150	Class 300	
1-1/2"	40				--
2"	50				47
3"	80				160
4"	100				250
6"	150				--

The segmented V-Port ball valve can be used in modulating control services or "on-off" services

PRESSURE TEMPERATURE CHART (ANSI 150 METAL SEAT)



HOW TO ORDER

Series	Anti-Cavitation	Body	Trim	Port	Packing
DM99	J	2 WCB	3 316SS	F Full R Reduced	G Grafoil TM TFM 1600 TC TFM 4215
		3 316SS	4 Alloy 20		
		4 Alloy 20	6 317SS		
		6 317SS	7 Hastelloy C		
		7 Hastelloy C	9 Duplex		
		9 Duplex			

Seat	End Connection
M Metal	W Wafer

J Flow Controls®
 4665 Interstate Drive
 Cincinnati, OH 45246
 513-330-6354
jflowcontrols.com

While the information and specifications contained in this literature are believed to be accurate, they are supplied for informative purposes only and should not be considered certified or a guarantee of satisfactory results. Nothing contained herein is to be construed as a warranty or guarantee, express or implied, regarding any matter with respect to this product. Because J Flow Controls® is continually improving and upgrading its product design, the specifications, dimensions and information contained herein are subject to change without notice.