



### DESCRIPTION

- 3 - Piece Sanitary Ball Valve
- Direct Mount
- Full Port
- 1/2" - 4"
- 600 / 800 / 1000 PSI (WOG)

# DM7300 Series

### CERTIFICATIONS

- Valve Body: ASME B16.34
- Material Certification: EN10204-3.1 MTR
- Quality Assurance: ISO 9001:2008
- Steel Casting: MSS SP-55
- Valve Marking: MSS SP-25
- Valve Test: API 598
- Direct Mount: ISO 5211
- Stem Connection: DIN 3337
- Class / Pressure Rating: 600 / 800 / 1000 psi
- Anti-Static: API 608
- Sulfide Stress Cracking: NACE MR-01-75
- End Connections: ASME BPE-2005

### FEATURES AND BENEFITS

- Designed for Food, Biological, Pharmaceuticals, or Similar Industries
- Body and End Caps Quality Investment Casting
- With ISO 5211 Mounting Pad
- Adjustable Stem Packing
- Available in Stainless Steel
- Blow-Out Proof Stem Design
- 100% Air Tested Under Water at 80-100 psi
- Working Pressure of 600 / 800 / 1000 psi
- FDA Viton O-Ring
- With Locking Function
- 6 Bolts and Nuts for 4" Valve
- End Type: T-Clamp / Tube Weld / Extended Tube Weld

#### FULL PORT VALVE

### FLOW COEFFICIENT

SIZE	CV Factor
1/2"	21
3/4"	50
1"	90
1-1/2"	240
2"	400
2-1/2"	700
3"	980
4"	1700

### OPTIONS

- Spring Return (Dead-Man) Handle
- Cavity Filled
- Polish to Customer's Specification
- Limit Switch Box with Handle
- Automation Applicable
- Hastalloy C
- V-Ball for Control Valve in 15°, 30°, 60°, 90°, Slot, and Custom
- ASME BPE (for SS316L)  
Low Ferrite (3%) / Low Sulphur (0.005% - 0.017%)

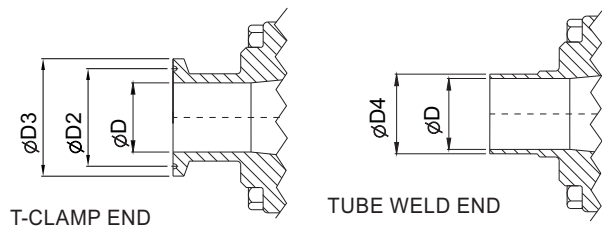
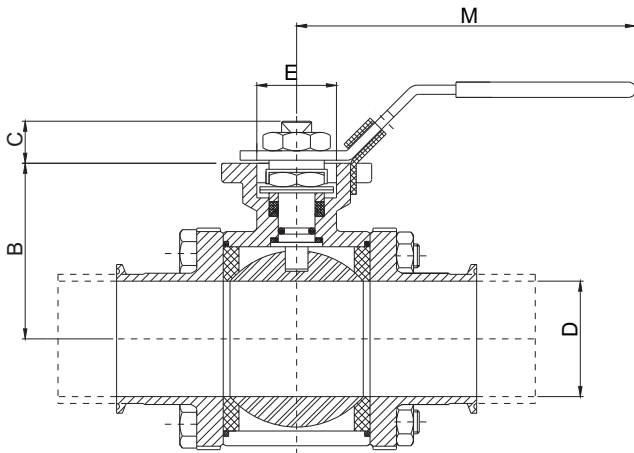
### BREAK-TORQUE VALUE (in-lb at 0 psi)

SIZE	1/2"	3/4"	1"	1-1/2"	2"	2-1/2"	3"	4"
NON-GREASE	62	71	97	266	292	664	832	1027

Note 1: The greases J Flow Controls uses include lubricants and anti-seize grease that are both SILICONE-FREE.

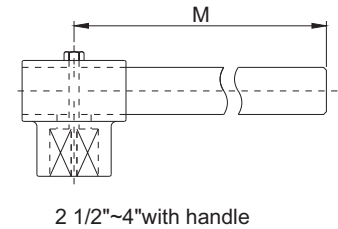
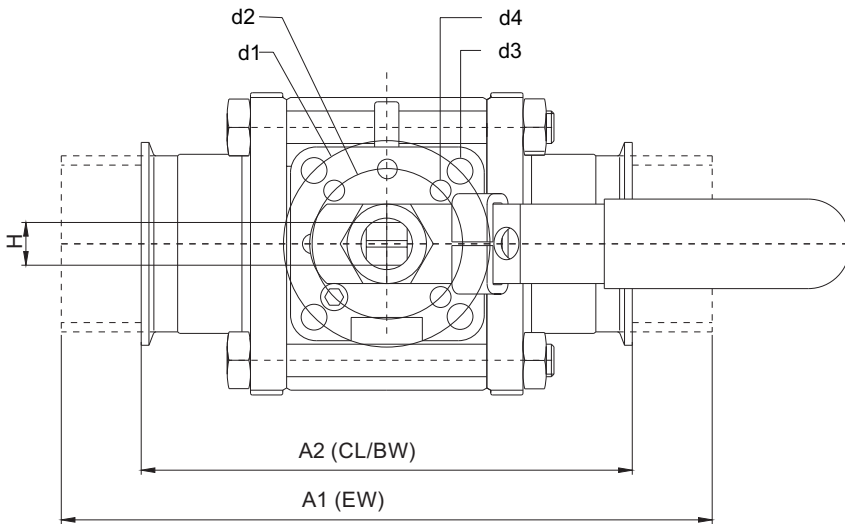
Note 2: J Flow Controls strongly suggests increasing the torque at least 30%-40% for safety factor when mounting an actuator.

# DM7300 Series Valves



## DIMENSIONS (in)

SIZE	D	D2	D3	D4
1/2"	0.38	0.85	0.98	0.50
3/4"	0.62	0.85	0.98	0.75
1"	0.87	1.71	1.98	1.00
1-1/2"	1.37	1.71	1.98	1.50
2"	1.87	2.22	2.52	2.00
2-1/2"	2.37	2.78	3.05	2.50
3"	2.87	3.28	3.58	3.00
4"	3.83	4.34	4.68	4.00

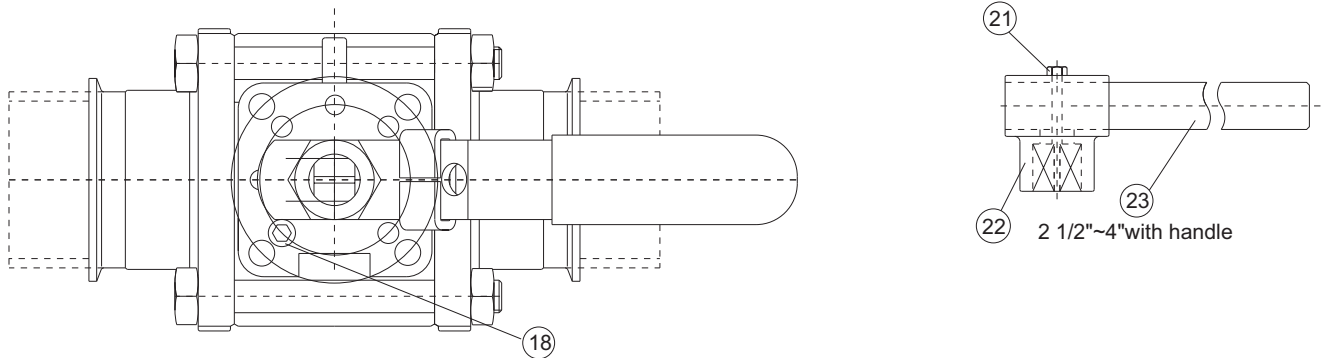


2 1/2"~4" with handle

## DIMENSIONS (in)

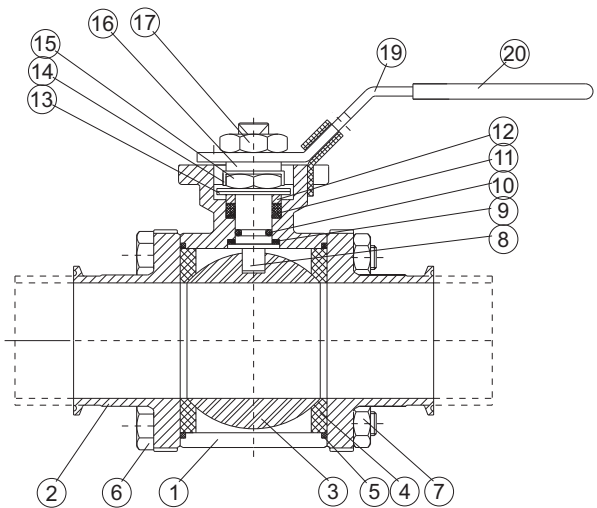
SIZE	A1	A2	B	C	D	d1	d2	d3	d4	E	H	M
1/2"	4.90	3.50	1.38	0.37	0.38	1.65	1.42	0.24	0.24	0.98	0.35	5.31
3/4"	5.60	4.00	1.54	0.37	0.62	1.65	1.42	0.24	0.24	0.98	0.35	5.31
1"	6.40	4.50	1.89	0.55	0.87	1.97	1.65	0.28	0.24	1.18	0.43	6.10
1-1/2"	7.20	5.50	2.40	0.71	1.37	2.76	1.97	0.36	0.28	1.38	0.55	8.07
2"	7.60	6.25	2.76	0.71	1.87	2.76	1.97	0.36	0.28	1.38	0.55	8.07
2-1/2"	10.00	6.75	3.54	0.87	2.37	4.02	2.76	0.44	0.35	2.17	0.67	11.42
3"	11.00	7.75	3.90	0.87	2.87	4.02	2.76	0.44	0.35	2.17	0.67	11.42
4"	12.00	9.50	5.16	1.02	3.83	4.92	4.02	0.53	0.44	2.76	0.87	13.19

# DM7300 Series Valves

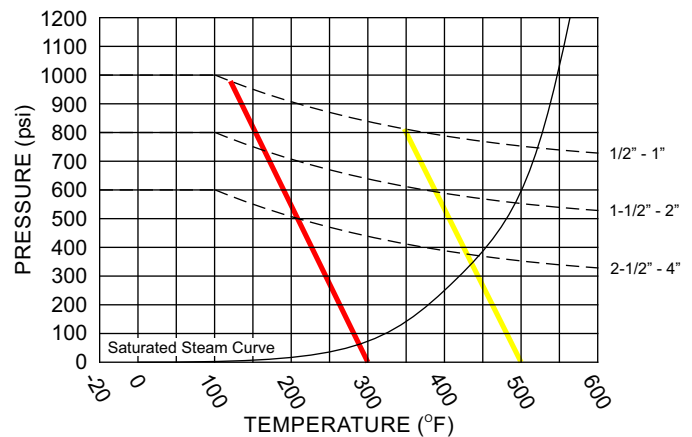


## MATERIALS LIST

ITEM	PART NAME	MATERIALS
1	BODY	CF8M
2	END CAP	CF8M
3	BALL	SS 316
4	BALL SEAT	PTFE
5	GASKET	PTFE
6	BODY BOLT	SS 304
7	BODY NUT	SS 304
8	STEM	SS 316
9	THRUST WASHER	RPTFE
10	O-RING	VITON
11	STEM PACKING	PTFE
12	GLAND WASHER	SS 304
13	DISC WASHER	SS 301
14	NUT STOPPER	SS 304
15	STEM NUT	SS 304
16	SPACE WASHER	SS 304
17	HANDLE NUT	SS 304
18	STOP PIN	SS 304
19	HANDLE	SS 304
20	SLEEVE	PLASTIC
21	SET BOLT	SS 304
22	LEVER HEAD	CF8
23	LEVER	STEEL PIPE



## PRESSURE/TEMPERATURE CHART



■ PTFE    ■ TFM1600

# DM7300 Series Valves

## HOW TO ORDER

Example: 100-DM7333FP TTCFTRCNANA

VALVE SIZE		PRODUCT SERIES	BODY MATERIAL	BALL/STEM MATERIAL	PORT	PACKING / BODY SEAL MATERIAL
<b>025</b>	1/4"	<b>DM73</b>	<b>3</b> CF8M	<b>3</b> CF8M	<b>FP</b> Full Port	<b>TT</b> PTFE
<b>038</b>	3/8"					
<b>050</b>	1/2"					
<b>075</b>	3/4"					
<b>100</b>	1"					
<b>125</b>	1-1/4"					

SEAT MATERIAL	END CONNECTIONS	MATERIAL OPTIONS	DESIGN OPTIONS
<b>CF</b> Cavity Filler (PTFE)	<b>FPT</b> Female NPT <b>WTE</b> Butt Weld, Tube <b>TUE</b> Tube <b>TRC</b> Tri-Clamp	<b>NA</b> Standard	<b>NA</b> Standard <b>SF</b> Self-Flushing Design

While the information and specifications contained in this literature are believed to be accurate, they are supplied for informative purposes only and should not be considered certified or a guarantee of satisfactory results. Nothing contained herein is to be construed as a warranty or guarantee, express or implied, regarding any matter with respect to this product. Because J Flow Controls is continually improving and upgrading its product design, the specifications, dimensions and information contained herein are subject to change without notice.