



DESCRIPTION

- 3 - Piece Ball Valve
- Direct Mount
- Full Port
- 1/4" - 3"
- 3600 PSI (WOG)

DM4800 Series

CERTIFICATIONS

- Valve Design: ASME B16.34
- Material Certification: EN10204-3.1 MTR
- Quality Assurance: ISO 9001:2008
- Steel Casting: MSS SP-55
- Valve Marking: MSS SP-25
- Valve Test: API 598 (ISO 5208)
- Direct Mount: ISO 5211
- Stem Connection: DIN3337
- Class (Pressure Rating): Class 1500
- Anti-Static: API 608
- Sulfide Stress Cracking: NACE MR-01-75
- End Connection: ASME B1.20.1, ASME B16.11, ASME B16.25

FULL PORT VALVE

FLOW COEFFICIENT

SIZE	CV Factor
1/4"	8.5
3/8"	8.5
1/2"	21
3/4"	50
1"	90
1-1/4"	110
1-1/2"	240
2"	400
2-1/2"	700
3"	980

FEATURES AND BENEFITS

- Body and End Caps Quality Investment Casting
- With ISO 5211 Mounting Pad
- Adjustable Stem Packing
- Available in Stainless Steel or Carbon Steel
- Blow-Out Proof Stem Design
- 100% Air Tested Under Water at 80-100 psi
- Temperature Range From -320°F to 800°F
- With Locking Function
- End Type: Butt Weld / Socket Weld / NPT

OPTIONS

- FIRE SAFE: API 607 - 6th Edition Certified
- Spring Return (Dead Man) Handle
- Oval Handle
- Automation Application
- V-Ball for Control Valve in 15°, 30°, 45°, 60°, 90°, Slot, or Custom
- Cryogenic Bonnet
- PTFE / PFA Coating (40-70 um)
- Available in Hastalloy C, Super Duplex, and Alloy 20

BREAK-TORQUE VALUE (in-lb at 0 psi)

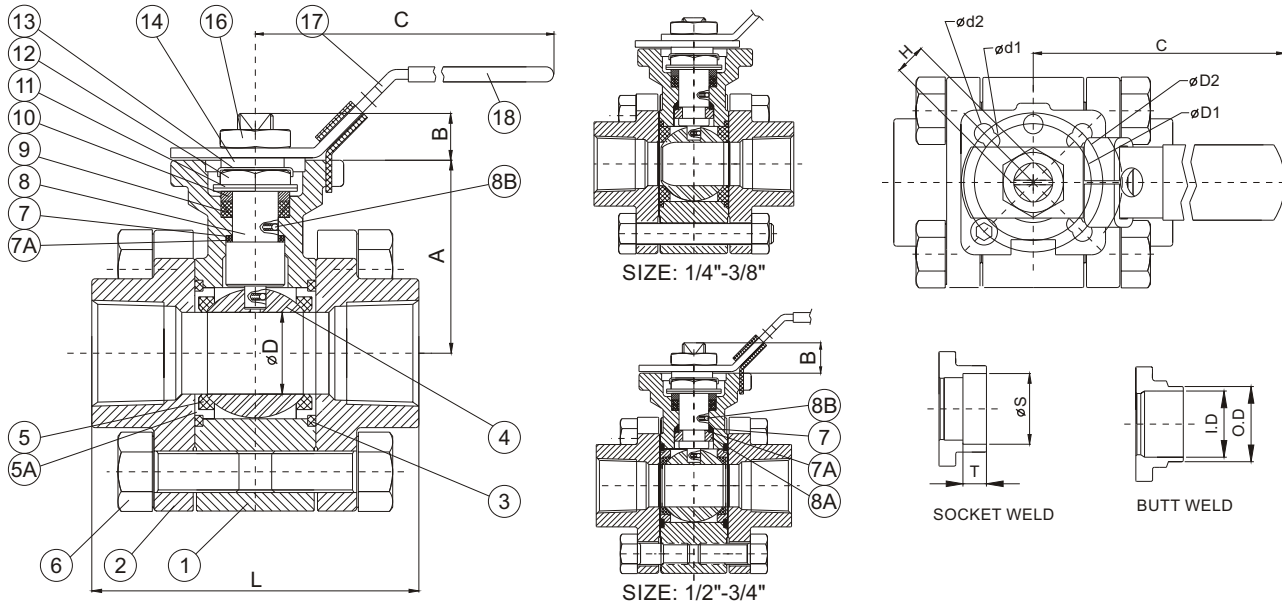
SIZE	1/4"	3/8"	1/2"	3/4"	1"	1-1/4"	1-1/2"	2"	2-1/2"	3"
TORQUE	123	123	123	136	238	436	524	599	1151	1763

Note 1: The greases J Flow Controls uses include lubricants and anti-seize grease that are both SILICONE-FREE.

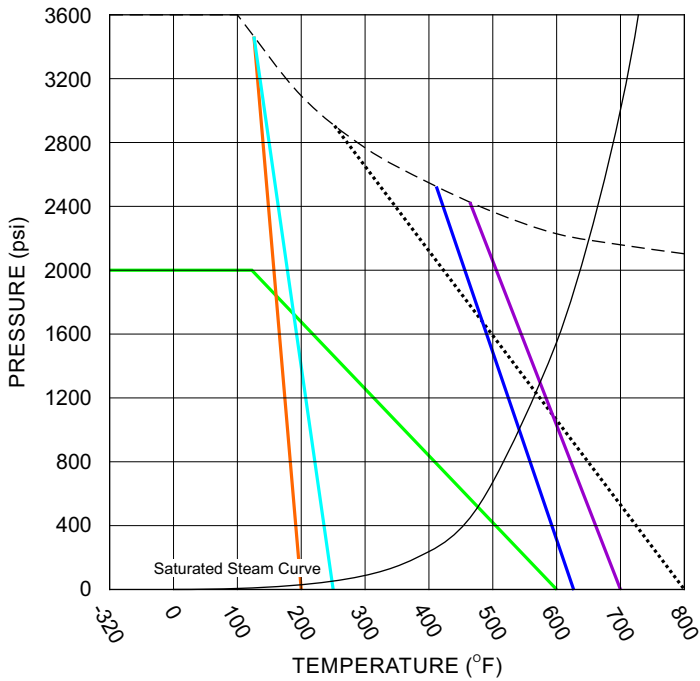
Note 2: J Flow Controls strongly suggests increasing the torque at least 30%-40% for safety factor when mounting an actuator.

While the information and specifications contained in this literature are believed to be accurate, they are supplied for informative purposes only and should not be considered certified or a guarantee of satisfactory results. Nothing contained herein is to be construed as a warranty or guarantee, express or implied, regarding any matter with respect to this product. Because J Flow Controls is continually improving and upgrading its product design, the specifications, dimensions and information contained herein are subject to change without notice.

DM4800 Series Valves



PRESSURE/TEMPERATURE CHART



■ DELRIN ■ TFM4215 ■ PEEK
■ DEVLON ■ Carbon PEEK - - - Metal

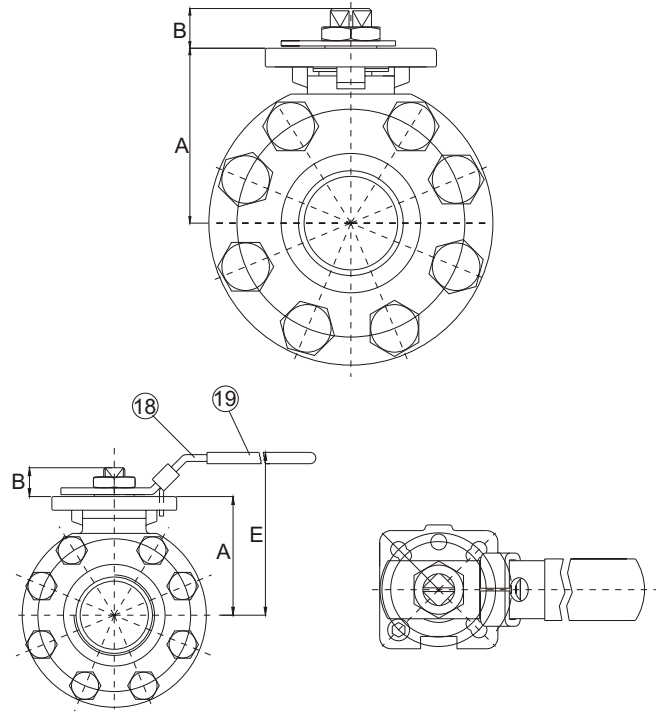
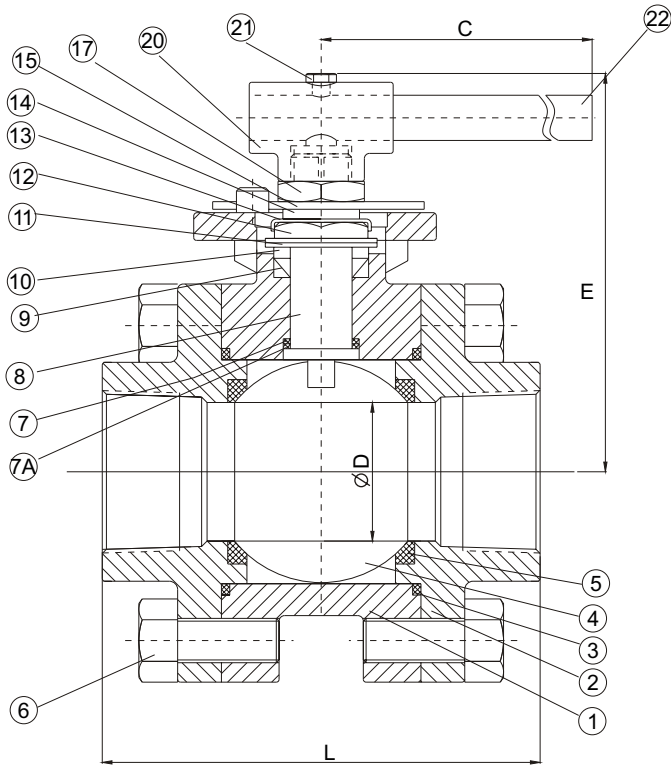
MATERIALS LIST 1/4" - 1"

ITEM	PART NAME	MATERIAL
1	BODY	CF8M / WCB
2	END CAP	CF8M / WCB
3	GASKET	TFM
4	BALL	SS 316
5	SEAT	PEEK
5A	SEAT HOUSING	SS 316
6	BOLT	SS 304
7	THRUST WASHER	TFM
7A	THRUST WASHER	PEEK
8	STEM	SS 316
8A	HALF SPLIT RING	SS 316
8B	ANTI-STATIC	SS 316
9	STEM PACKING	TFM
10	GLAND WASHER	SS 304
11	DISK WASHER	SS 301
12	STEM NUT	SS 304
13	NUT STOP	SS 304
14	SPACE WASHER	SS 304
15	STOP PIN	SS 304
16	HANDLE NUT	SS 304
17	HANDLE	SS 304
18	SLEEVE	PLASTIC

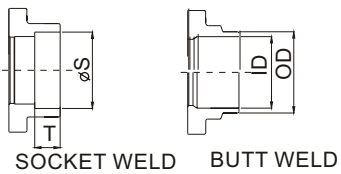
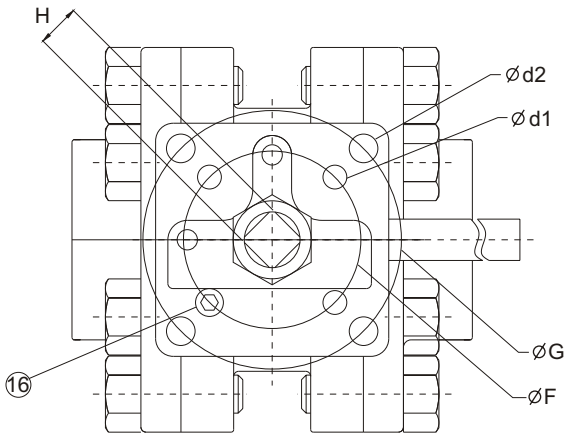
DIMENSIONS 1/4" - 1" (in)

SIZE	A	B	C	D	D1	D2	d1	d2	H	L	SW		BW(#40)		BW(#80)	
											S	T	OD	ID	OD	ID
1/4"	1.81	0.37	6.30	0.43	1.42	1.65	0.24	0.28	0.35	2.62	0.56	0.44	0.55	0.36	0.55	0.30
3/8"	1.81	0.37	6.30	0.43	1.42	1.65	0.24	0.28	0.35	2.62	0.69	0.44	0.69	0.49	0.69	0.42
1/2"	1.89	0.37	6.30	0.59	1.42	1.65	0.24	0.28	0.35	2.76	0.86	0.50	0.84	0.63	0.84	0.54
3/4"	2.09	0.47	7.48	0.79	-	1.97	-	0.28	0.43	3.62	1.07	0.56	1.05	0.81	1.05	0.74
1"	2.32	0.47	7.48	0.98	-	1.97	-	0.28	0.43	4.13	1.33	0.63	1.31	1.05	1.31	0.96

DM4800 Series Valves



SIZE: 1-1/4" & 1-1/2"



MATERIALS LIST 1-1/4" - 2"

ITEM	PART NAME	MATERIAL
1	BODY	CF8M / WCB
2	END CAP	CF8M / WCB
3	GASKET	TFM
4	BALL	SS 316
5	SEAT	PEEK
6	BOLT	SS 304
7	THRUST WASHER	TFM
7A	THRUST WASHER	PEEK
8	STEM	SS 316 / 17-4PH
9	STEM PACKING	TFM
10	GLAND WASHER	SS 304
11	DISK WASHER	SS 301
12	GLAND NUT	SS 304
13	NUT STOP	SS 304
14	SPACE WASHER	SS 304
15	STOP PLATE	SS 304
16	STOP PIN	SS 304
17	STEM NUT	SS 304
18	HANDLE	SS 304
19	SLEEVE	PLASTIC
20	LEVER HEAD	CF8
21	SET BOLT	SS 304
22	LEVER	STEEL PIPE

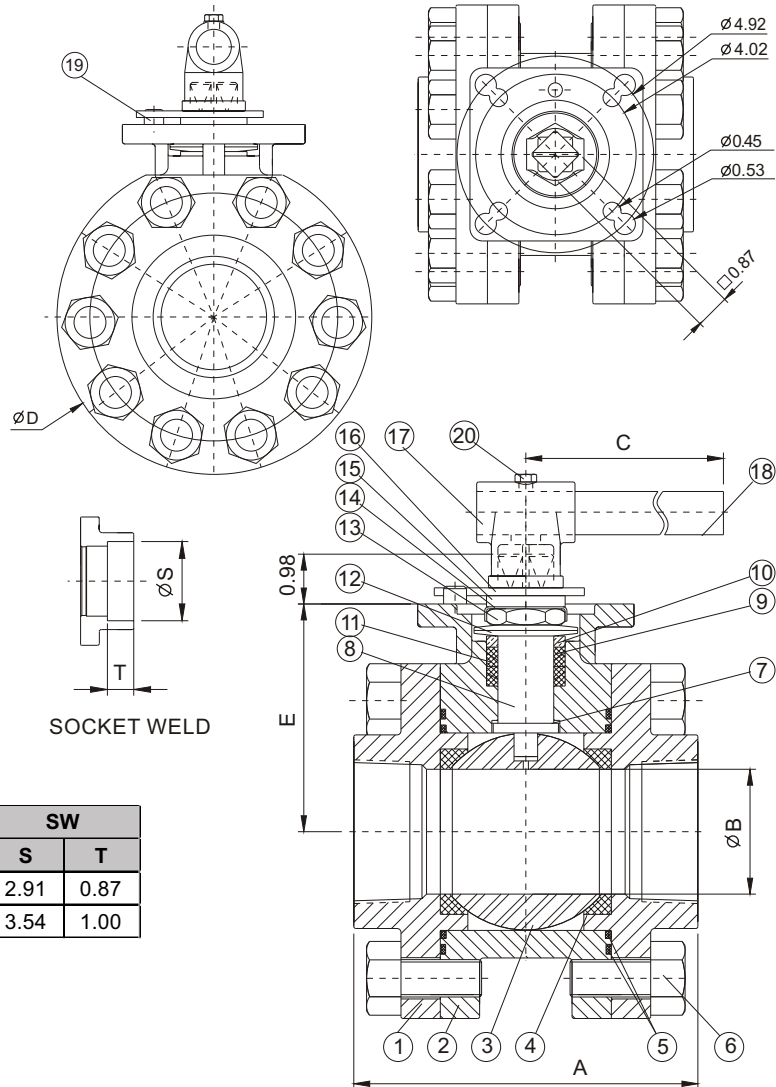
DIMENSIONS 1-1/4" - 2" (in)

SIZE	A	B	C	D	E	F	G	d1	d2	H	L	SW		BW(#40)		BW(#80)	
												S	T	OD	ID	OD	ID
1-1/4"	2.91	0.63	9.65	1.26	4.33	1.97	2.76	0.28	0.36	0.55	4.49	1.67	0.69	1.66	1.38	1.67	1.28
1-1/2"	3.15	0.63	9.65	1.50	4.57	1.97	2.76	0.28	0.36	0.55	5.04	1.91	0.72	1.91	1.59	1.91	1.49
2"	3.78	0.79	13.78	1.97	5.67	2.76	4.02	0.36	0.45	0.67	6.22	2.41	0.84	2.38	2.06	2.38	1.93

DM4800 Series Valves

MATERIALS LIST 2-1/2" - 3"

ITEM	PART NAME	MATERIAL
1	END CAP	CF8M / WCB
2	BODY	CF8M / WCB
3	BALL	SS 316
4	SEAT	PEEK
5	GASKET	TFM
6	BOLT	SS 304
7	THRUST WASHER	PEEK
8	STEM	SS 316 / 17-4PH
9	STEM PACKING	TFM
10	GLAND WASHER	SS 304
11	DISK WASHER	SS 301
12	GLAND NUT	SS 304
13	NUT STOP	SS 304
14	SPACE WASHER	SS 304
15	STOP PLATE	SS 304
16	STEM NUT	SS 304
17	LEVER HEAD	CF8
18	LEVER	STEEL PIPE
19	STOP PIN	SS 304
20	SET BOLT	SS 304



DIMENSIONS 2-1/2" - 3" (in)

SIZE	A	B	C	D	E	F	SW	
							S	T
2-1/2"	-	2.50	15.75	-	-	-	2.91	0.87
3"	7.72	3.07	20.47	7.87	4.96	6.50	3.54	1.00

HOW TO ORDER

VALVE SIZE	PRODUCT SERIES	BODY MATERIAL	BALL/STEM MATERIAL	PORT	PACKING / BODY SEAL MATERIAL
025 1/4" 125 1-1/4"	DM48	2 WCB	3 CF8M	FP Full Port	TC TFM4215
038 3/8" 150 1-1/2"		3 CF8M	4 ALLOY 20	15 15° V-Ball	GG Graphite
050 1/2" 200 2"		4 ALLOY 20	7 HASTELLOY C276	30 30° V-Ball	
075 3/4" 250 2-1/2"		7 HASTELLOY C276	9 DUPLEX 2507	60 60° V-Ball	
100 1" 300 3"		9 DUPLEX 2507		90 90° V-Ball	

SEAT MATERIAL	END CONNECTIONS	MATERIAL OPTIONS	DESIGN OPTIONS
DE DELRIN	F15 ANSI 150 RF Flange	NA Standard	NA Standard
DV DEVLON	F30 ANSI 300 RF Flange	BC TFM4215 Body Seal	
TC TFM4215	F60 ANSI 600 RF Flange	BG Graphite Body	
PK PEEK	SCW Socket Weld		
PC Carbon PEEK	FPT Female NPT		
M3 CF8M	W10 Butt Weld sch 10		
	W40 Butt Weld sch 40		
	W80 Butt Weld sch 80		
	E10 Extended Butt Weld sch 10		
	E40 Extended Butt Weld sch 40		
	E80 Extended Butt Weld sch 80		
	E16 Extended Butt Weld sch 160		
	FSW Female NPT X Socket Weld		
	ESW Extended Socket Weld		

Example: 100-DM4833FPGGPKFPTNANA