

### DESCRIPTION

- 3/4 Way Ball Valve
- Direct Mount (1/4" - 4")
- Full and Reduced Port
- 1/4" - 16"
- ANSI 150 - 2500 / 800 PSI (WOG)

# DM3(4)L(T)2A00 Series

### CERTIFICATIONS

- Valve Design: ASME B16.34
- Material Certification: EN10204-3.1 MTR
- Quality Assurance: ISO 9001:2008
- Steel Casting: MSS SP-55
- Valve Marking: MSS SP-25
- Valve Test: API 598
- Direct Mount: ISO 5211
- Stem Connection: DIN 3337
- Anti-Static: API 608
- Sulfide Stress Cracking: NACE MR-01-75
- End Connections: ASME B16.11, ASME B1.20.1, ASME B16.5, ASME B16.25



L-Port



T-Port



I-Port



X-Port (Double L)

### FEATURES AND BENEFITS

- Body and End Caps Quality Investment Casting (1/4" - 4") / Sand Casting (5" - 8")
- Available in Stainless Steel and Carbon Steel
- With ISO 5211 Direct Mounting Pad (1/4" - 4")
- Adjustable Stem Packing
- Blow-Out Proof Stem Design
- Floating (1/4" - 2") / Trunnion (2-1/2"+) Design
- Available in L / T / X / I - Port
- Available in 3 / 4 / 5 - Way in Block Body Type
- 100% Air Tested Under Water at 80-100 psi
- Temperature Range -20°F to +600°F
- End Type: Butt Weld / Flanged / Socket Weld / Threaded
- Locking Function

### OPTIONS

- Automation Applicable
- PTFE / PFA Coating (40-70 um)
- PTFE / TFM1600 / TFM4215
- PTFE Cavity Filler
- 180 Degree Operation Stop Plate
- Hastalloy C / Alloy 20 / Super Duplex / Monel
- Fire Safe Design
- Refer to DMHP3(4)L(T)2A00 Series for High Pressure

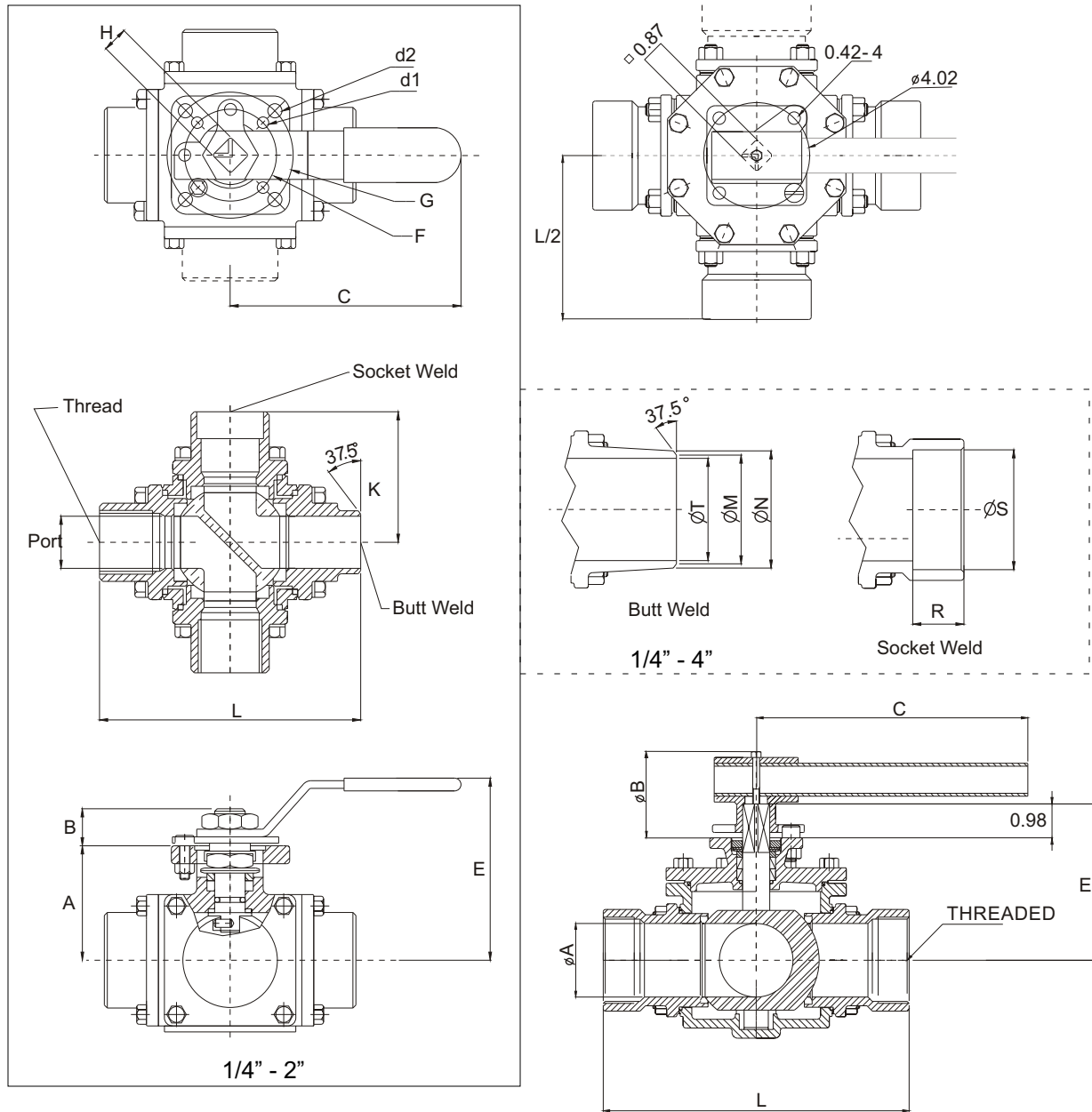
### BREAK-TORQUE VALUE (in-lb at 0 psi)

SIZE	1/4"	3/8"	1/2"	3/4"	1"	1-1/4"	1-1/2"	2"	2-1/2"	3"	4"	5"	6"	8"	10"
GREASE	91	91	113	136	221	306	489	635	1192	1305	2100	3983	4222	5160	7789
NON-GREASE	136	136	142	170	266	363	545	851	1133	2214	2838	-	-	-	12834

Note 1: The greases J Flow Controls uses include lubricants and anti-seize grease that are both SILICONE-FREE.

Note 2: J Flow Controls strongly suggests increasing the torque at least 30%-40% for safety factor when mounting an actuator.

# DM3(4)L(T)2A00 Series Valves



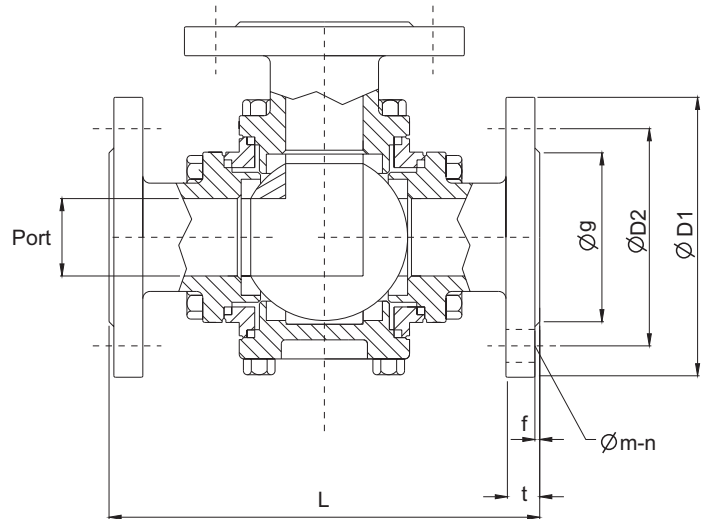
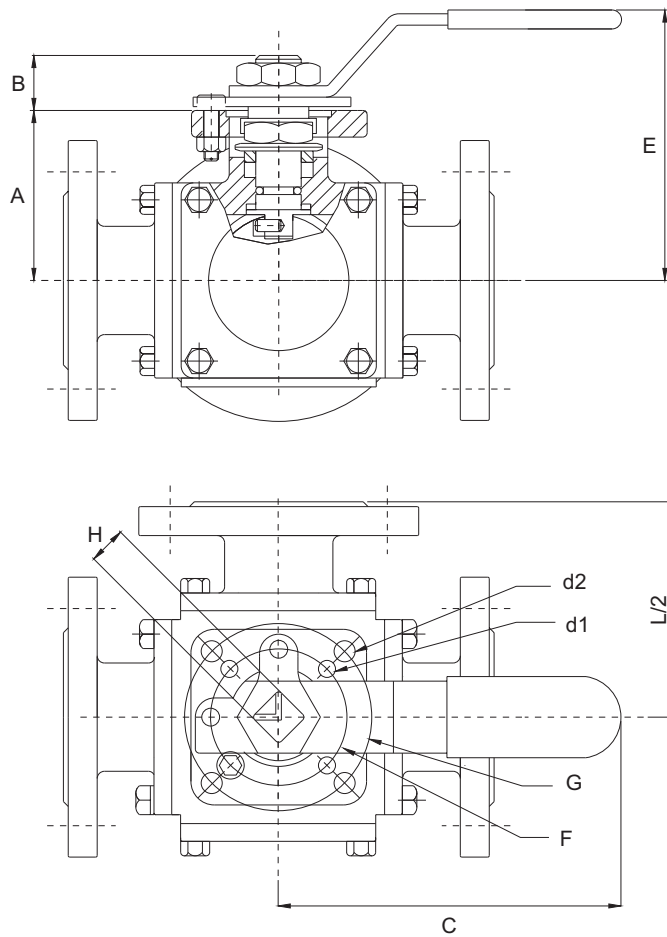
## DIMENSIONS THREADED 1/4" - 2" (in)

SIZE	A	B	C	d1	d2	E	F	G	H	K	L	R	S	PORT	T	M	N
1/4"	1.48	0.37	5.12	0.24	0.24	2.44	1.42	1.65	0.35	1.73	3.43	0.44	0.56	0.39	0.39	0.49	0.67
3/8"	1.48	0.37	5.12	0.24	0.24	2.44	1.42	1.65	0.35	1.73	3.43	0.44	0.69	0.49	0.47	0.57	0.75
1/2"	1.65	0.43	5.12	0.24	0.24	2.52	1.42	1.65	0.35	2.07	4.09	0.50	0.85	0.59	0.59	0.69	0.85
3/4"	1.93	0.55	6.50	0.24	0.28	3.23	1.65	1.97	0.43	2.19	4.37	0.56	1.07	0.79	0.79	0.89	1.08
1"	2.17	0.55	6.50	0.24	0.28	3.50	1.65	1.97	0.43	2.52	5.00	0.63	1.33	0.98	0.98	1.10	1.36
1-1/4"	2.48	0.67	8.07	0.28	0.36	3.86	1.97	2.76	0.55	2.72	5.43	0.69	1.67	1.26	1.26	1.38	1.69
1-1/2"	2.91	0.63	8.07	0.28	0.36	4.25	1.97	2.76	0.55	3.11	6.22	0.75	1.91	1.50	1.50	1.61	1.93
2"	3.66	0.83	12.80	0.36	0.45	5.51	2.76	4.02	0.67	3.74	7.48	0.87	2.41	1.97	1.97	2.13	2.40

## DIMENSIONS THREADED 2-1/2" - 4" (in)

SIZE	A	B	C	E	L	L (BW)	R	S	T	M	N
2-1/2"	2.44	2.56	15.75	5.67	11.57	10.43	0.91	2.91	2.56	2.76	3.03
3"	2.99	3.15	19.69	6.38	12.48	11.44	0.91	3.53	3.15	3.35	3.58
4"	3.78	3.94	25.59	7.17	14.53	13.58	1.14	4.53	3.94	3.94	4.53

# DM3(4)L(T)2A00 Series Valves



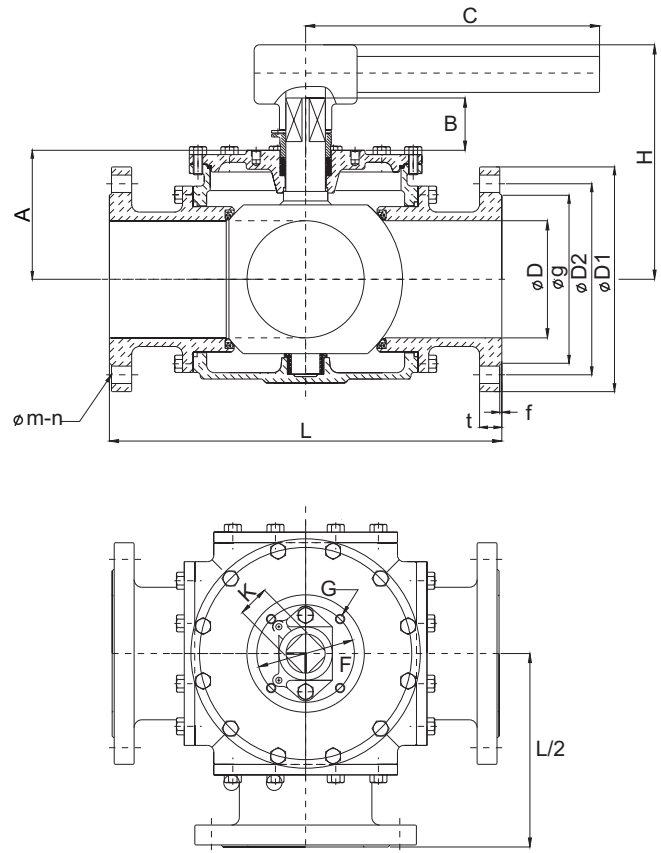
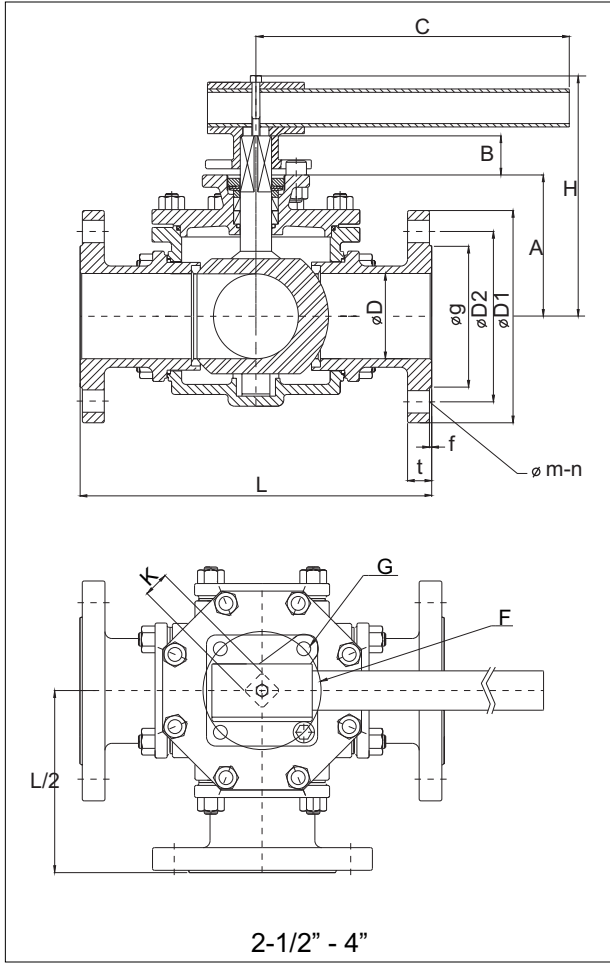
## DIMENSIONS FLANGED 1/2" - 2" (in)

SIZE	A	B	C	d1	d2	E	F	G	H	PORT
1/2"	1.61	0.43	5.12	0.24	0.24	2.44	1.42	1.65	0.35	0.59
3/4"	1.93	0.55	6.50	0.24	0.28	3.23	1.65	1.97	0.43	0.79
1"	2.17	0.55	6.50	0.24	0.28	3.50	1.65	1.97	0.43	0.98
1-1/4"	2.48	0.67	8.07	0.28	0.36	3.86	1.97	2.76	0.55	1.26
1-1/2"	2.91	0.63	8.07	0.28	0.36	4.25	1.97	2.76	0.55	1.50
2"	3.66	0.83	12.80	0.36	0.45	5.51	2.76	4.02	0.67	1.97

## DIMENSIONS FLANGED 1/2" - 2" (in)

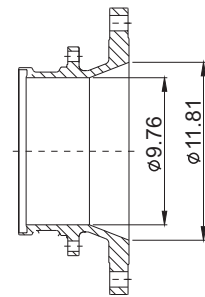
SIZE	CLASS 150								CLASS 300							
	D1	D2	g	t	f	m	n	L	D1	D2	g	t	f	m	n	L
1/2"	3.50	2.38	1.38	0.44	0.06	0.63	4	5.98	3.74	2.62	1.38	0.57	0.06	0.63	4	6.30
3/4"	3.86	2.76	1.69	0.44	0.06	0.63	4	6.57	4.61	3.25	1.69	0.63	0.06	0.75	4	6.97
1"	4.25	3.13	2.01	0.44	0.06	0.63	4	7.48	4.88	3.50	2.01	0.69	0.06	0.75	4	7.87
1-1/4"	4.61	3.50	2.52	0.50	0.06	0.63	4	8.19	5.28	3.88	2.52	0.81	0.06	0.75	4	8.19
1-1/2"	5.00	3.88	2.87	0.56	0.06	0.63	4	8.66	6.14	4.51	2.87	0.89	0.06	0.87	4	9.21
2"	5.98	4.74	3.62	0.62	0.06	0.63	4	9.96	6.50	5.00	3.62	1.00	0.06	0.75	8	10.75

# DM3(4)L(T)2A00 Series Valves



## DIMENSIONS FLANGED 2-1/2" - 12" (in)

SIZE	A	B	C	D	F	G	H	K
2-1/2"	4.67	0.98	15.75	2.44	4.02	0.43	8.27	0.87
3"	5.37	0.98	19.69	2.99	4.02	0.43	8.98	0.87
4"	6.16	0.98	25.59	3.78	4.02	0.43	9.76	0.87
5"	5.53	2.32	33.86	4.92	4.92	M12	10.04	1.06
6"	6.28	2.44	47.24	5.91	4.92	M12	11.57	1.42
8"	7.91	2.44	59.06	7.87	4.92	M12	13.19	1.42
10"	9.92	3.66	78.74	9.76	5.51	M16	16.06	1.42
12"	9.92	3.66	78.74	9.76	5.51	M16	16.06	1.42

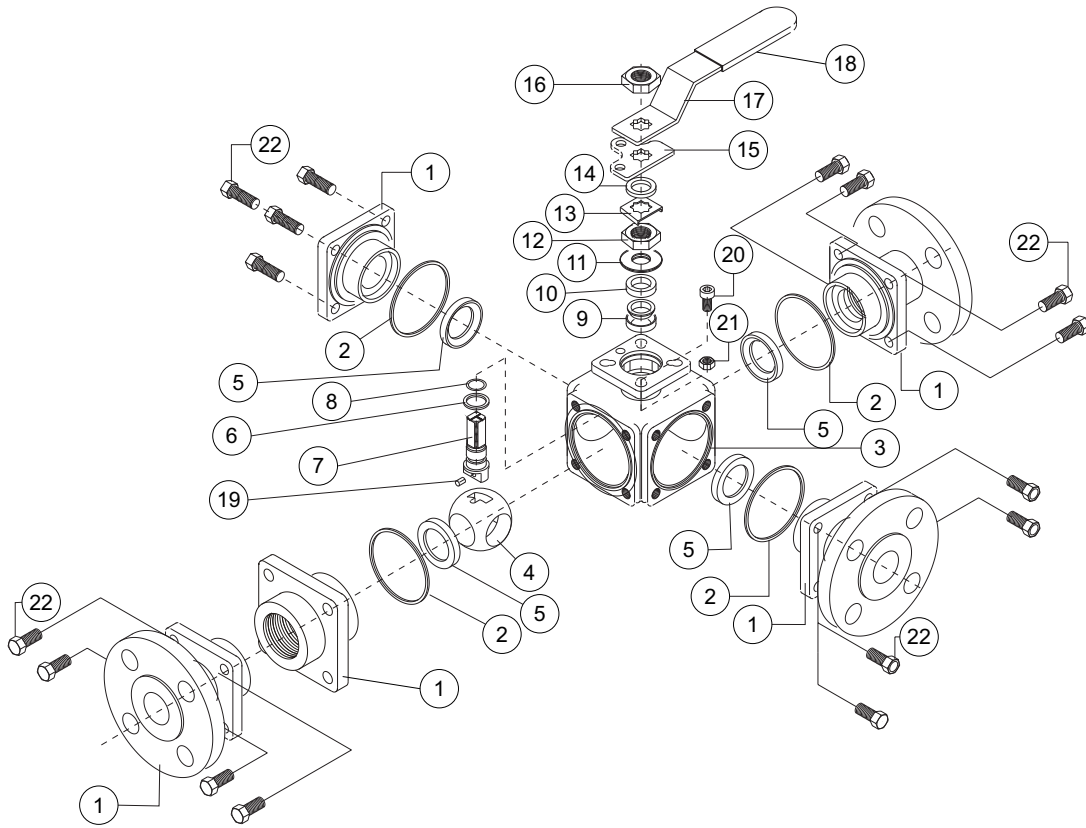


12"  
STD. PORT

## DIMENSIONS FLANGED 2-1/2" - 12" (in)

SIZE	CLASS 150								CLASS 300							
	D1	D2	g	t	f	m	n	L	D1	D2	g	t	f	m	n	L
2-1/2"	7.01	5.49	4.13	0.70	0.06	0.75	4	11.81	7.48	5.87	4.13	1.00	0.06	0.87	8	11.81
3"	7.48	6.00	5.00	0.75	0.06	0.75	4	12.01	8.27	6.61	5.00	1.13	0.06	0.87	8	13.01
4"	9.02	7.50	6.18	0.94	0.06	0.75	8	14.51	10.00	7.87	6.18	1.26	0.06	0.87	8	15.50
5"	10.00	8.50	7.32	0.94	0.06	0.87	8	16.46	-	-	-	-	-	-	-	-
6"	11.00	9.51	8.50	1.00	0.06	0.87	8	16.81	12.52	10.63	8.50	1.46	0.06	0.87	12	18.43
8"	13.50	11.75	10.63	1.13	0.06	0.87	8	20.94	-	-	-	-	-	-	-	-
10"	16.00	14.25	12.76	1.19	0.06	1.00	12	25.98	-	-	-	-	-	-	-	-
12"	19.02	17.01	15.00	1.28	0.06	1.02	12	25.98	-	-	-	-	-	-	-	-

# DM3(4)L(T)2A00 Series Valves

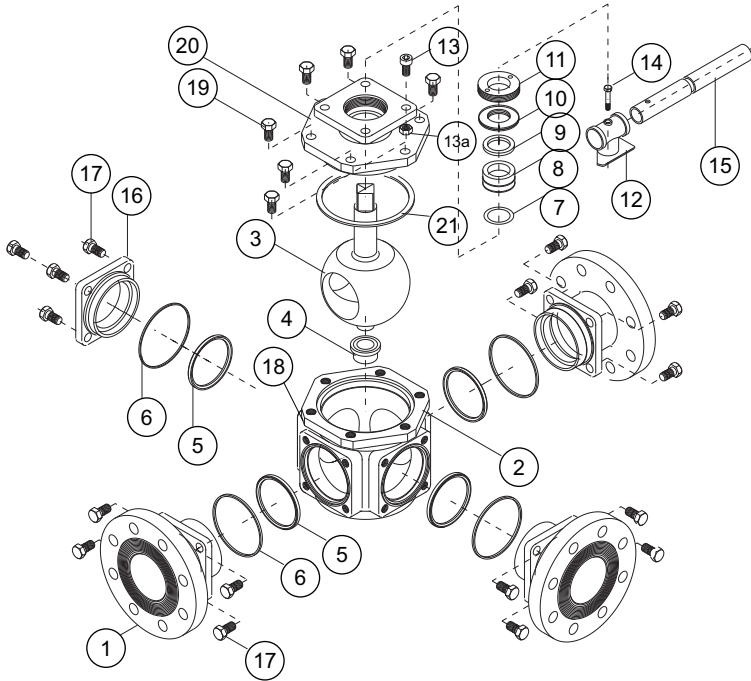


## MATERIALS LIST 1/4" - 2"

ITEM	PART NAME	MATERIALS
1	END CAP	CF8M / WCB
2	GASKET	PTFE
3	BODY	CF8M / WCB
4	BALL	SS 316
5	SEAT	PTFE
6	THRUST WASHER	RPTFE
7	STEM	SS 316
8	O-RING	VITON
9	STEM PACKING	PTFE
10	GLAND	SS 304
11	DISK WASHER	SS 301
12	STEM NUT	SS 304
13	NUT STOP	SS 304
14	SPACE WASHER	SS 304
15	STOPPER PLATE	SS 304
16	HANDLE NUT	SS 304
17	HANDLE	SS 304
18	SLEEVE	PLASTIC
19	INSERT PIN	SS 304
20	STOP PIN	SS 316
21	STOP PIN NUT	SS 304
22	BOLTS	SS 304

# DM3(4)L(T)2A00 Series Valves

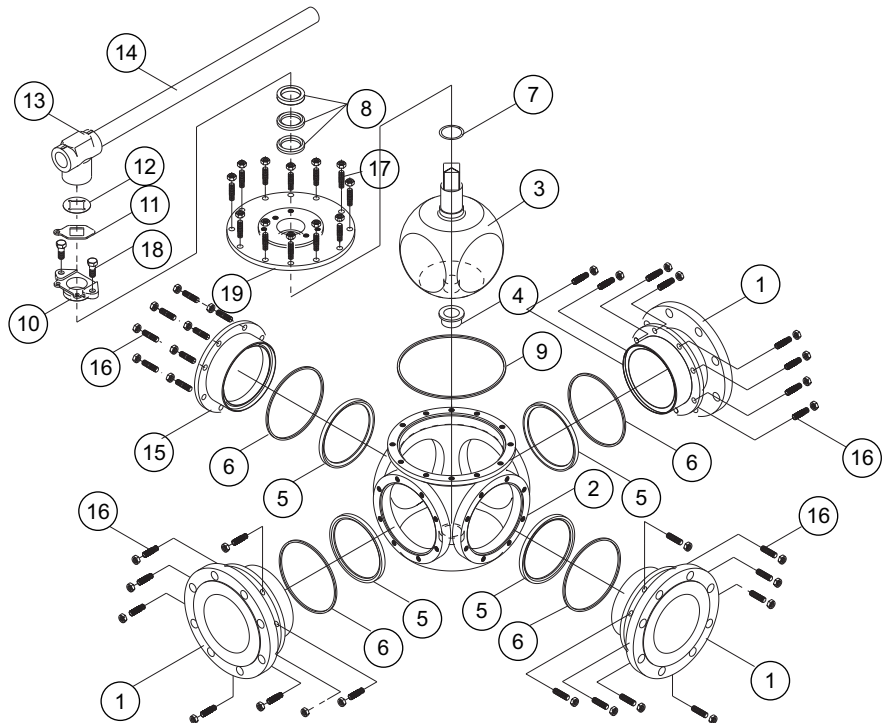
## MATERIALS LIST 2-1/2" - 4"



ITEM	PART NAME	MATERIALS
1	END CAP	CF8M / WCB
2	BODY	CF8M / WCB
3	BALL & STEM	SS 316
4	HOUSING	PTFE + STAINLESS
5	SEATS	PTFE
6	GASKET	PTFE
7	O-RING	VITON
8	STEM PACKING	PTFE
9	GLAND WASHER	SS 304
10	DISK WASHER	SS 301
11	GLAND	SS 304
12	HANDLE HEAD	CF8M / WCB
13	STOP PIN	SS 304
13a	STOP PIN NUT	SS 304
14	BOLT	SS 304
15	HANDLE	STEEL PIPE
16	BLANK CAP	CF8M / WCB
17	BOLT	SS 304
18	BOLT NUTS	SS 304
19	BONNET BOLT	SS 304
20	BONNET	CF8M / WCB
21	BONNET GASKET	PTFE

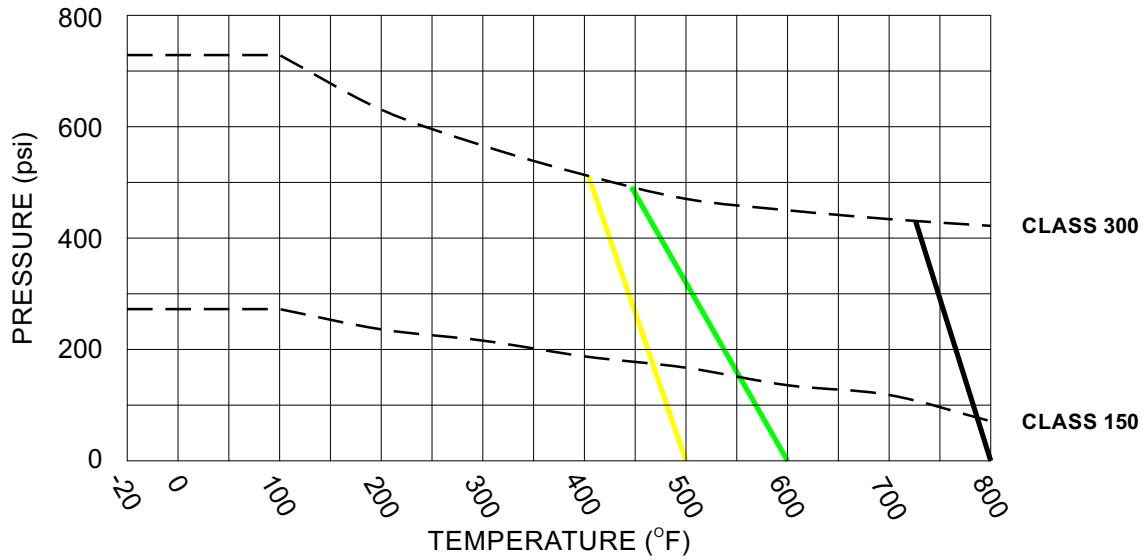
## MATERIALS LIST 5" - 8"

ITEM	PART NAME	MATERIALS
1	END CAP	CF8M / WCB
2	BODY	CF8M / WCB
3	BALL & STEM	SS 316
4	HOUSING	PTFE + STAINLESS
5	SEATS	PTFE
6	GASKET	PTFE
7	O-RING	VITON
8	STEM PACKING	PTFE
9	BONNET GASKET	PTFE
10	GLAND	SS 304
11	STOP	SS 304
12	STOP RING	SS 304
13	HANDLE HEAD	DUCTILE IRON
14	HANDLE	STEEL PIPE
15	BLANK CAP	CF8M / WCB
16	FLANGE END BOLT	SS 304
17	BONNET BOLT	SS 304
18	GLAND BOLT	SS 304
19	BONNET	CF8M / WCB

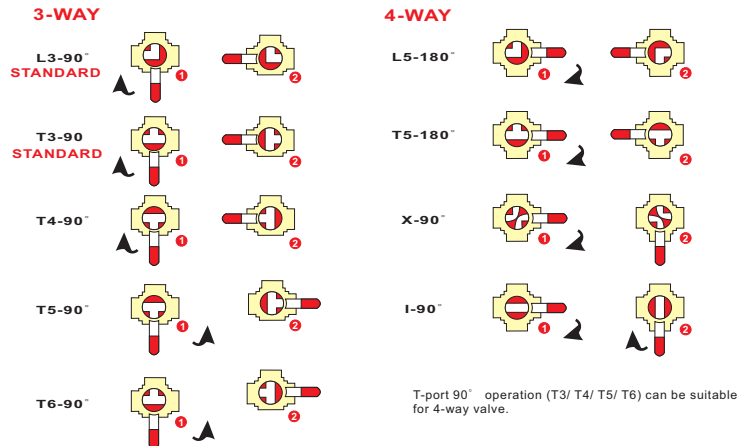


# DM3(4)L(T)2A00 Series Valves

## PRESSURE / TEMPERATURE CHART



TFM1600
  TFM4215
  Metal



## FULL PORT VALVE FLOW COEFFICIENT

SIZE	3-Way, L-Port, Full Bore	3-Way, T-Port (Through), Full Bore	3-Way, T-Port (Branch), Full Bore	4-Way, X-Port, Full Bore
1/4"	7	15	6	-
3/8"	7	15	6	-
1/2"	13	25	9	7
3/4"	23	46	20	12
1"	35	70	25	18
1-1/4"	54	109	47	28
1-1/2"	81	162	62	42
2"	153	309	112	80
2-1/2"	186	376	140	97
3"	290	589	248	151
4"	466	941	414	243
6"	1595	3222	1150	832
8"	2162	4368	1751	1128
10"	3105	6272	2585	1620

# DM3(4)L(T)2A00 Series Valves

## HOW TO ORDER

Example: 100-DM3L2A33FPTMTMF15NANA

VALVE SIZE		PRODUCT SERIES	BODY MATERIAL	BALL/STEM MATERIAL	PORT		
<b>050</b>	1/2"	<b>250</b>	2-1/2"	<b>DM3L2A</b>	<b>2</b> WCB	<b>3</b> CF8M	<b>FP</b> Full Port
<b>075</b>	3/4"	<b>300</b>	3"	<b>DM3T2A</b>	<b>3</b> CF8M	<b>4</b> ALLOY 20	<b>RP</b> Reduced Port
<b>100</b>	1"	<b>400</b>	4"	<b>DM4LL2A</b>	<b>4</b> ALLOY 20	<b>5</b> MONEL	
<b>125</b>	1-1/4"	<b>600</b>	6"		<b>5</b> MONEL	<b>7</b> HASTELLOY C276	
<b>150</b>	1-1/2"	<b>800</b>	8"		<b>7</b> HASTELLOY C276	<b>9</b> DUPLEX 2507	
<b>200</b>	2"	<b>10X</b>	10"		<b>9</b> DUPLEX 2507		

PACKING / BODY SEAL MATERIAL	SEAT MATERIAL	END CONNECTIONS
<b>TT</b> PTFE	<b>CF</b> Cavity Filled (PTFE)	<b>F15</b> ANSI 150 RF Flange
<b>TM</b> TFM1600	<b>TM</b> TFM1600	<b>F30</b> ANSI 300 RF Flange
<b>TC</b> TFM4215	<b>TC</b> TFM4215	<b>F60</b> ANSI 600 RF Flange
	<b>M3</b> CF8M	<b>F90</b> ANSI 900 RF Flange
		<b>F1X</b> ANSI 1500 RF Flange
		<b>F2X</b> ANSI 2500 RF Flange
		<b>SCW</b> Socket Weld
		<b>FPT</b> Female NPT
		<b>W10</b> Butt Weld sch 10
		<b>W40</b> Butt Weld sch 40
		<b>W80</b> Butt Weld sch 80

MATERIAL OPTIONS	DESIGN OPTIONS
<b>NA</b> Standard	<b>NA</b> Standard
<b>BC</b> TFM4215 Body Seal	<b>L2</b> 3-Way Port L2 - 90°
<b>BG</b> Graphite Body	<b>L3</b> 3-Way Port L3 - 90°
<b>SF</b> Self Flushing	<b>T3</b> 3-Way Port T3 - 90°
	<b>T4</b> 3-Way Port T4 - 90°
	<b>T5</b> 3-Way Port T5 - 90°
	<b>T6</b> 3-Way Port T6 - 90°

CLASS 600 / 900 / 1500 / 2500 valves are available, factory will advise on sizes and dimensions.

While the information and specifications contained in this literature are believed to be accurate, they are supplied for informative purposes only and should not be considered certified or a guarantee of satisfactory results. Nothing contained herein is to be construed as a warranty or guarantee, express or implied, regarding any matter with respect to this product. Because J Flow Controls is continually improving and upgrading its product design, the specifications, dimensions and information contained herein are subject to change without notice.