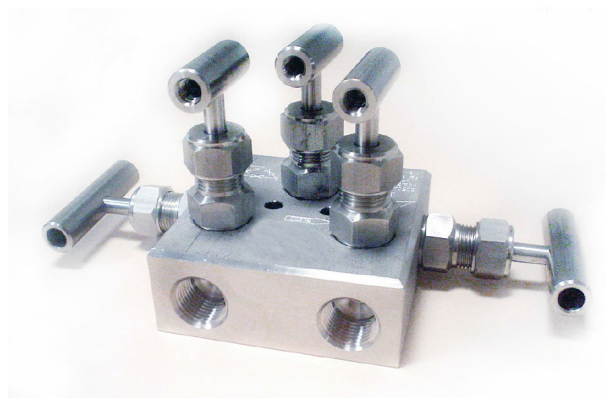


The MB-2.5 Series manifolds are designed to work with fluids under high pressure and/or high temperature service. You can select among three different distribution diagrams where five valves command two pressure lines, a by-pass and two purge lines.

Features & Benefits

- Metal-to-metal shut-off
- Easy packing external adjustment
- Free packing change in service
- PTFE packing
- 100% tested

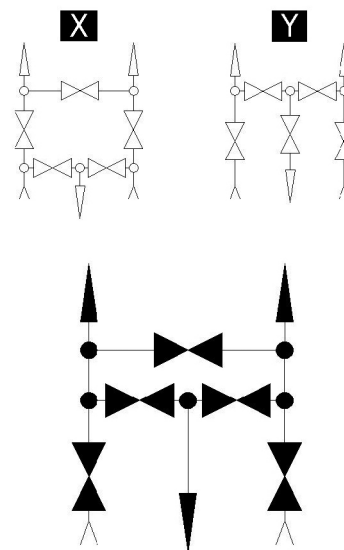


Options

- Movable stem tip
- Graphoil packing for high temperatures
- Four screws M10 instead of 7/16" UNF
- Diagram 2
- Diagram 3

Technical Data

Max. Pressure	Up to 6000 PSI (420 bar)
Temperatures	-4°F / 752°F (-20°C / 400°C)
Dimensions	1/2"
A Opened	4.01
A Closed	3.73
B Opened	4.99
B Closed	4.72
C	3.54
D	2.12
Orifice Size	4



Order Codes

NPT	3250
BSP	3251
SW	3252

Materials

No.	Part	Carbon Steel	Stainless Steel AISI-316	Special Alloys
1	Set Screw	AISI-304 (DIN1.4301)	AISI-304 (DIN1.4301)	AISI-304 (DIN1.4301)
2	Handle	F-112 (DIN1.1158)	AISI-316 (DIN1.4401)	AISI-316 (DIN1.4401)
3	Nut	F-112 (DIN1.1158)	AISI-316 (DIN1.4401)	AISI-316 (DIN1.4401)
4	Bonnet	F-112 (DIN1.1158)	AISI-316 (DIN1.4401)	Exotic Alloy
5	Gland	F-112 (DIN1.1158)	AISI-316 (DIN1.4401)	AISI-316 (DIN1.4401)
6	Packing	PTFE or Graphoil	PTFE or Graphoil	PTFE or Graphoil
7	Stem	AISI-316 (DIN1.4401)	AISI-316 (DIN1.4401)	Exotic Alloy
8	Body	F-112 (DIN1.1158)	AISI-316 (DIN1.4401)	Exotic Alloy

Special Alloys

Among the wide range of alloys existing, J Flow has selected those considered by our customers as most suitable, which we stock to ensure a quick and effective supply. If you do not find the required alloy or need further information about our exotic alloy valves, please contact our Technical Department.

- AISI-316Ti (1.4571)
- AISI-904L (1.4539)
- Duplex (1.4462)
- SuperDuplex (1.4410/1.4501)
- 254-SMO (1.4547)
- Titanium Gr. 2 (1.7864)
- Hastelloy C-276 (2.4819)

Ordering Information

Manifold Code: Look for it in the order codes chart on the previous page

Option/s: If required, add the code/s from the options section on the previous page

Material: Look for the code on the materials chart

Example of manifold and two options:

Manifold MB-2.5 1/2" NPT AISI-316L with diagram 2 and graphoil packing of: The reference required to place the order is: 3251GXA4

Tests

According to API 598, each manifold is tested to check the leakage in the seat and packing. Upon request, the corresponding materials and test certificates can be delivered with the manifold.

