

The MBT-2.3DA Series manifolds are designed to work with fluids under high pressure and/or high temperature service. Their distribution diagram consists of three valves commanding three lines: high pressure, low pressure and a by-pass line to restart the instrument. The coupling is manufactured according to DIN EN 61518. Four screws 7/16" UNF and two PTFE joints to assemble the transmitter are supplied.

## Features & Benefits

- High-strength body
- Stainless steel non-rotating ball shut-off
- PTFE packing
- 100% tested

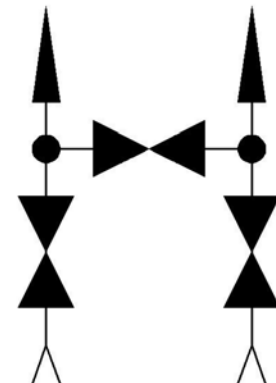
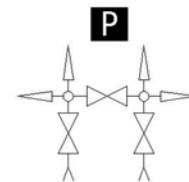
## Options

- Movable stem tip
- Graphoil packing for high temperatures
- Four screws M10 instead of 7/16" UNF
- Two bleed screws in outflow



## Technical Data

Max. Pressure	Up to 6000 PSI (420 bar)
Temperatures	-4°F / 752°F (-20°C / 400°C)
Dimensions	Flange
A Opened	3.62
A Closed	3.34
B Opened	4.79
B Closed	4.52
C	2.83
D	1.61
E	2.12
F	7/16" UNF
Orifice Size	4



## Order Codes

Flange	3200
--------	------

## Materials

No.	Part	Carbon Steel	Stainless Steel AISI-316	Special Alloys
1	Set Screw	AISI-304 (DIN1.4301)	AISI-304 (DIN1.4301)	AISI-304 (DIN1.4301)
2	Handle	F-112 (DIN1.1158)	AISI-316 (DIN1.4401)	AISI-316 (DIN1.4401)
3	Nut	F-112 (DIN1.1158)	AISI-316 (DIN1.4401)	AISI-316 (DIN1.4401)
4	Bonnet	F-112 (DIN1.1158)	AISI-316 (DIN1.4401)	Exotic Alloy
5	Gland	F-112 (DIN1.1158)	AISI-316 (DIN1.4401)	AISI-316 (DIN1.4401)
6	Packing	PTFE or Graphoil	PTFE or Graphoil	PTFE or Graphoil
7	Stem	AISI-316 (DIN1.4401)	AISI-316 (DIN1.4401)	Exotic Alloy
8	Body	F-112 (DIN1.1158)	AISI-316 (DIN1.4401)	Exotic Alloy
9	Screw	F-112 (DIN1.1158)	AISI-316 (DIN1.4401)	AISI-316 (DIN1.4401)
10	Joint	PTFE	PTFE	PTFE

## Special Alloys

Among the wide range of alloys existing, J Flow has selected those considered by our customers as most suitable, which we stock to ensure a quick and effective supply. If you do not find the required alloy or need further information about our exotic alloy valves, please contact our Technical Department.

AISI-316Ti (1.4571)  
 AISI-904L (1.4539)  
 Duplex (1.4462)  
 SuperDuplex (1.4410/1.4501)  
 254-SMO (1.4547)  
 Titanium Gr. 2 (1.7864)  
 Hastelloy C-276 (2.4819)

## Ordering Information

**Manifold Code:** Look for it in the order codes chart on the previous page

**Option/s:** If required, add the code/s from the options section on the previous page

**Material:** Look for the code on the materials chart

### Example of manifold and two options:

Manifold MBT-2.3DA 1/2" Duplex with movable stem tip and two bleed valves in outflow: The reference required to place the order is: 3200FPAD

## Tests

According to API 598, each manifold is tested to check the leakage in the seat and packing. Upon request, the corresponding materials and test certificates can be delivered with the manifold.

