

The MB-1.2 Series manifolds are designed to work with fluid under high pressure and/or high temperature service. Their distribution diagram consists of two valves commanding the main line, where inlet and outlet are 180°, and a discharge or testing line outlet at 90° outflow.

## Features & Benefits

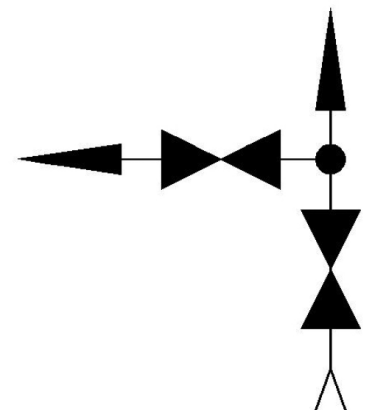
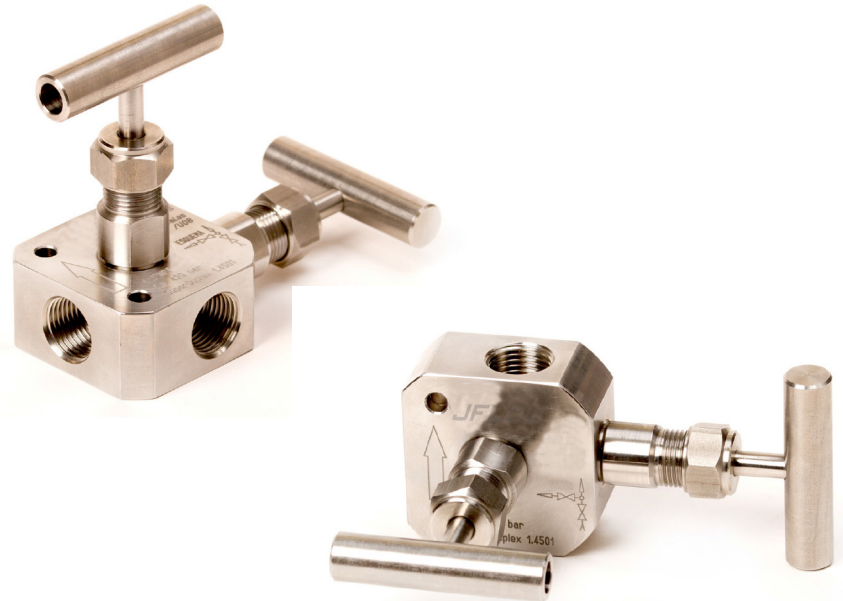
- Male-Female connections
- Metal-to-metal shut-off
- Easy packing external adjustment
- PTFE packing
- Two mounting holes
- 100% tested

## Options

- Movable stem tip
- Graphoil packing for high temperatures

## Technical Data

|               |                              |
|---------------|------------------------------|
| Max. Pressure | Up to 6000 PSI (420 bar)     |
| Temperatures  | -4°F / 752°F (-20°C / 400°C) |
| Dimensions    | 1/2"                         |
| A Opened      | 3.62                         |
| A Closed      | 3.34                         |
| B Opened      | 4.01                         |
| B Closed      | 3.73                         |
| C             | 2.36                         |
| D             | 1.18                         |
| E             | 1.57                         |
| F             | 0.26                         |
| Orifice Size  | 4                            |



## Order Codes

|     |      |
|-----|------|
| NPT | 3050 |
| BSP | 3051 |
| SW  | 3052 |

## Materials

| No. | Part      | Carbon Steel         | Stainless Steel AISI-316 | Special Alloys       |
|-----|-----------|----------------------|--------------------------|----------------------|
| 1   | Set Screw | AISI-304 (DIN1.4301) | AISI-304 (DIN1.4301)     | AISI-304 (DIN1.4301) |
| 2   | Handle    | F-112 (DIN1.1158)    | AISI-316 (DIN1.4401)     | AISI-316 (DIN1.4401) |
| 3   | Nut       | F-112 (DIN1.1158)    | AISI-316 (DIN1.4401)     | AISI-316 (DIN1.4401) |
| 4   | Bonnet    | F-112 (DIN1.1158)    | AISI-316 (DIN1.4401)     | Exotic Alloy         |
| 5   | Gland     | F-112 (DIN1.1158)    | AISI-316 (DIN1.4401)     | AISI-316 (DIN1.4401) |
| 6   | Packing   | PTFE or Graphoil     | PTFE or Graphoil         | PTFE or Graphoil     |
| 7   | Stem      | AISI-316 (DIN1.4401) | AISI-316 (DIN1.4401)     | Exotic Alloy         |
| 8   | Body      | F-112 (DIN1.1158)    | AISI-316 (DIN1.4401)     | Exotic Alloy         |

## Special Alloys

Among the wide range of alloys existing, J Flow has selected those considered by our customers as most suitable, which we stock to ensure a quick and effective supply. If you do not find the required alloy or need further information about our exotic alloy valves, please contact our Technical Department.

AISI-316Ti (1.4571)  
 AISI-904L (1.4539)  
 Duplex (1.4462)  
 SuperDuplex (1.4410/1.4501)  
 254-SMO (1.4547)  
 Titanium Gr. 2 (1.7864)  
 Hastelloy C-276 (2.4819)

## Ordering Information

**Manifold Code:** Look for it in the order codes chart on the previous page

**Option/s:** If required, add the code/s from the options section on the previous page

**Material:** Look for the code on the materials chart

### Example of valve and two options:

Manifold MB-1.2 1/2" BSP SuperDuplex with graphoil packing: The reference required to place the order is: 3050GAS

## Tests

According to API 598, each manifold is tested to check the leakage in the seat and packing. Upon request, the corresponding materials and test certificates can be delivered with the manifold.

